



2021



***EPHYRA BIOSCIENCES INC.***

***WWW.EPHYRABIOSCIENCES.COM***

**Plant disease detection kits**  
**Catalog 2021**

*ELISA*

*PCR*

*Lateral Flow (Fast kits)*

*Dot-blot*

*Immunofluorescence*

EPHYRA BIOSCIENCES INC.

# 2021 Product Catalog

---

## Kit Suppliers

**LOEWE**<sup>®</sup>

**POCKET**<sup>®</sup>  
DIAGNOSTIC

 **AGRITEST**  
PLANT HEALTH MANAGEMENT

© Ephyra Biosciences Inc.  
4554 Reid Lane  
Battersea, ON K0H1H0  
Canada  
Phone 647.225.5044

# Table of Contents

## Table of Contents

<b>Dot-Blot</b> .....	<b>2</b>
Dot-Blot - Viruses .....	3
<b>ELISA</b> .....	<b>6</b>
ELISA - Bacteria .....	7
ELISA- Chemicals .....	16
ELISA- Controls .....	18
ELISA- Disposables .....	19
ELISA - Fungi .....	20
ELISA - Viruses .....	22
<b>Immunofluorescence</b> .....	<b>65</b>
Immunofluorescence – Antisera and Controls .....	66
Immunofluorescence – Secondary Conjugates .....	70
Immunofluorescence – Disposables .....	71
<b>Lateral Flow</b> .....	<b>72</b>
Lateral flow - Bacteria .....	73
Lateral flow - Fungi .....	75
Lateral flow - Viruses .....	76
Lateral flow – Supplements and Buffers .....	79
<b>PCR</b> .....	<b>80</b>
PCR - Bacteria .....	81
PCR – Extraction Kits .....	84
PCR - Fungi .....	85
PCR - Phytoplasma .....	86
DNA PCR - Viruses .....	87
RNA PCR - Viruses .....	88
Real-time PCR .....	92
<b>Reagents</b> .....	<b>93</b>
Reagents Buffers .....	94
Reagents Controls .....	97
Reagents Extraction kits .....	98
<b>Contact Info</b> .....	<b>99</b>

# DOT-BLOT Kits

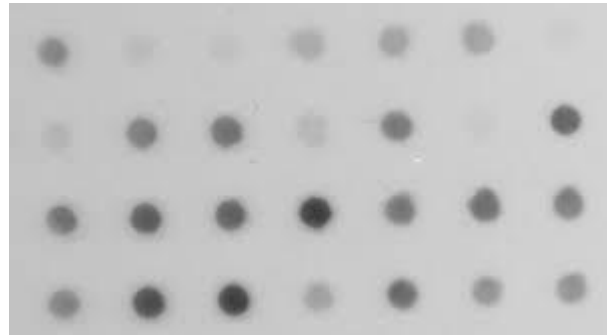
## What is a Dot-Blot?

---

A **Dot-Blot** is a technique used to detect and identify targeted DNA on a membrane. In a dot blot the target DNA to be detected is not separated by electrophoresis. Instead, a mixture containing the target DNA to be detected is applied directly on a membrane as a dot, and then is spotted through circular templates directly onto the membrane or paper substrate. This differs from the southern blot because DNA samples are not separated electrophoretically. This is then followed by detection by nucleotide probes.

The technique offers significant savings in time, as chromatography or gel electrophoresis, and the complex blotting procedures for the gel are not required. Dot blots can confirm the presence or absence of a biomolecule (target DNA) which can be detected by the DNA probes.

Because dot blot does not require complicated instrument to operate, dot blot assays are easy to use to detect the presence of foreign microorganisms in plant tissues.



## DOT-BLOT – VIRUSES

- 10-HYB artichoke CERT (AILV-ARLV-AMCV-BYMV-CMV-PZSV-TICV-TMV-TSWV-TUMV)

Catalog No.	Designation	Size
H-MA-10	10-HYB artichoke CERT	39 tests

- 10-HYB tomato CERT (AMV-CMV-PepMV-PVX-PVY-PZSV-TIC-TMV-TSWV-TYLC)

Catalog No.	Designation	Size
H-MT-10	10-HYB tomato CERT	39 tests

- 4-HYB artichoke CERT (Please select 4 from: AILV, AMCV, ARLV, BYMV, CMV, PZSV, TICV, TMV, TSWV, TUMV)

Catalog No.	Designation	Size
H-MA-4	4-HYB artichoke CERT	45 tests

- 4-HYB tomato CERT (Please select 4 from: AMV, CMV, INSV, PepMV, PVX, PVY, PZSV, TICV, TMV, TSWV, TYLC)

Catalog No.	Designation	Size
H-MT-4	4-HYB tomato CERT	45 tests

- AILV HYB (Artichoke Italian Latent Virus)

Catalog No.	Designation	Size
H-11	AILV HYB	48 tests

- AMCV HYB (Artichoke Mottled Crinkle Virus)

Catalog No.	Designation	Size
H-13	AMCV HYB	48 tests

- AMV HYB (Alfalfa Mosaic Virus)

Catalog No.	Designation	Size
H-01	AMV HYB	48 tests

**DOT BLOT KITS**

- **ArLV HYB (Artichoke Latent Virus)**

Catalog No.	Designation	Size
H-12	ArLV HYB	48 tests

- **BYMV HYB (Bean Yellow Mosaic Virus)**

Catalog No.	Designation	Size
H-14	BYMV HYB	48 tests

- **CMV HYB (Cucumber Mosaic Virus)**

Catalog No.	Designation	Size
H-02	CMV HYB	48 tests

- **INSV HYB (Impatiens Necrotic Spot Virus)**

Catalog No.	Designation	Size
H-03	INSV HYB	48 tests

- **PepMV HYB (Pepino Mosaic Virus)**

Catalog No.	Designation	Size
H-10	PepMV HYB	48 tests

- **PVX HYB (Potato Virus X)**

Catalog No.	Designation	Size
H-05	PVX HYB	48 tests

- **PVY HYB (Potato Virus Y)**

Catalog No.	Designation	Size
H-04	PVY HYB	48 tests

- **PZSV HYB (Pelargonium Zonate Spot Virus)**

Catalog No.	Designation	Size
H-06	PZSV HYB	48 tests

## DOT BLOT KITS

- **TICV HYB (Tomato Infectious Chlorosis Virus)**

Catalog No.	Designation	Size
H-15	TICV HYB	48 tests

- **TMV HYB (Tobacco Mosaic Virus)**

Catalog No.	Designation	Size
H-09	TMV HYB	48 tests

- **TSWV HYB (Tomato Spotted Wilt Virus)**

Catalog No.	Designation	Size
H-07	TSWV HYB	48 tests

- **TuMV HYB (Turnip Mosaic Virus)**

Catalog No.	Designation	Size
H-16	TuMV HYB	48 tests

- **TYLCV HYB (Tomato Yellow Leaf Curl Virus)**

Catalog No.	Designation	Size
H-08	TYLCV HYB	48 tests

## ELISA Kits

### What is ELISA?

---

ELISA (enzyme-linked immunosorbent assay) is a plate-based assay technique designed for detecting and quantifying peptides, proteins, antibodies and hormones. In an ELISA, an antigen must be immobilized to a solid surface and then complexed with an antibody that is linked to an enzyme. Detection is accomplished by assessing the conjugated enzyme activity via incubation with a substrate to produce a measureable product. The most crucial element of the detection strategy is a highly specific antibody-antigen interaction.

ELISAs are typically performed in 96-well (or 384-well) polystyrene plates, which will passively bind antibodies and proteins. It is this binding and immobilization of reagents that makes ELISAs so easy to design and perform. Having the reactants of the ELISA immobilized to the microplate surface makes it easy to separate bound from non-bound material during the assay. This ability to wash away nonspecifically bound materials makes the ELISA a powerful tool for measuring specific analytes within a crude preparation.

## ELISA – BACTERIA

- **Acidovorax avenae ssp. citrulli**

Catalog No.	Designation	Size
07154S/100	Acidovorax avenae ssp. citrulli set / 100	100 tests
07154S/300	Acidovorax avenae ssp. citrulli set / 300	300 tests
07154S/500	Acidovorax avenae ssp. citrulli set / 500	500 tests
07154S/1000	Acidovorax avenae ssp. citrulli set / 1000	1000 tests
07154C/096	Acidovorax avenae ssp. citrulli complete kit / 96	96 tests
07154C/480	Acidovorax avenae ssp. citrulli complete kit / 480	480 tests
07154C/960	Acidovorax avenae ssp. citrulli complete kit / 960	960 tests
07154PC	Positive Control Acidovorax avenae ssp. citrulli inactivated	1 vial (10 tests)
07154NC	Negative Control Acidovorax avenae ssp. citrulli	1 vial (10 tests)

- **Clavibacter michiganensis ssp. michiganensis**

Catalog No.	Designation	Size
07063S/100	Clavibacter m. ssp. michiganensis set / 100	100 tests
07063S/300	Clavibacter m. ssp. michiganensis set / 300	300 tests
07063S/500	Clavibacter m. ssp. michiganensis set / 500	500 tests
07063S/1000	Clavibacter m. ssp. michiganensis set / 1000	1000 tests
07063C/096	Clavibacter m. ssp. michiganensis complete kit	96 tests
07063C/480	Clavibacter m. ssp. michiganensis complete kit	480 tests
07063C/960	Clavibacter m. ssp. michiganensis complete kit / 960	960 tests
07208PC	Positive Control Quarantine RAG Type unspecific	1 vial (10 tests)
07063NC	Negative Control C. m. ssp. michiganensis	1 vial (10 tests)

- **Clavibacter michiganensis ssp. sepedonicus**

Catalog No.	Designation	Size
07064S/100	Clavibacter m. ssp. sepedonicus set / 100	100 tests
07064S/300	Clavibacter m. ssp. sepedonicus set / 300	300 test
07064S/500	Clavibacter m. ssp. sepedonicus set / 500	500 tests
07064S/1000	Clavibacter m. ssp. sepedonicus set / 1000	1000 test
07064C/096	Clavibacter m. ssp. sepedonicus complete kit / 96	96 tests
07064C/480	Clavibacter m. ssp. sepedonicus complete kit / 480	480 tests
07064C/ 960	Clavibacter m. ssp. sepedonicus complete kit / 960	960 tests
07208PC	Positive Control Quarantine RAG Type unspecific	1 vial (10 tests)
07064NC	Negative Control Clavibacter m. ssp. sepedonicus	1 vial (10 tests)



**ELASA KITS**

- **Dickeya chrysanthemi Saintpaulia isolate (Erwinia chrysanthemi, Pectobacterium chrysanthemi, Bacterial soft rot)**

Catalog No.	Designation	Size
07146S/100	Dickeya (=Pectobacterium) chrysanthemi set / 100	100 tests
07146S/300	Dickeya (=Pectobacterium) chrysanthemi set / 300	300 tests
07146S/500	Dickeya (=Pectobacterium) chrysanthemi set / 500	500 tests
07146S/1000	Dickeya (=Pectobacterium) chrysanthemi set / 1000	1000 tests
07146C/096	Dickeya (=Pectobacterium) chrysanthemi complete kit / 96	96 tests
07146C/480	Dickeya (=Pectobacterium) chrysanthemi complete kit / 480	480 tests
07146C/960	Dickeya (=Pectobacterium) chrysanthemi complete kit / 960	960 tests
07146PC	Positive Control Dickeya (=Pectobacterium) chrysanthemi inactivated	1 vial (10 tests)
07146NC	Negative Control Dickeya (=Pectobacterium) chrysanthemi	1 vial (10 tests)

- **Erwinia amylovora (Fire blight, Micrococcus amylovorus Burrill)**

Catalog No.	Designation	Size
07069S/100	Erwinia amylovora set / 100	100 tests
07069S/300	Erwinia amylovora set / 300	300 tests
07069S/500	Erwinia amylovora set / 500	500 tests
08069S/1000	Erwinia amylovora set / 1000	1000 tests
07069C/096	Erwinia amylovora complete kit / 96	96 tests
07069C/480	Erwinia amylovora complete kit / 480	480 tests
07096C/960	Erwinia amylovora complete kit / 960	960 tests
07069PC	Positive Control Erwinia amylovora inactivated	1 vial (10 tests)
07069NC	Negative Control Erwinia amylovora	1 vial (10 tests)

- **Pantoea stewartii ssp. stewartii (Erwinia stewartii ssp. stewartii, Xanthomonas stewartii, Bacterial wilt, Stewarts disease)**

Catalog No.	Designation	Size
07129S/100	Pantoea stewartii ssp. stewartii set / 100	100 tests
07129S/300	Pantoea stewartii ssp. stewartii set / 300	300 tests
07129S/500	Pantoea stewartii ssp. stewartii set / 500	500 tests
07129S/1000	Pantoea stewartii ssp. stewartii set / 1000	1000 tests
07129C/096	Pantoea stewartii ssp. stewartii complete kit / 96	96 tests
07129C/480	Pantoea stewartii ssp. stewartii complete kit / 480	480 tests
07129C/960	Pantoea stewartii ssp. stewartii complete kit / 960	960 tests
07129PC	Positive Control Pantoea stewartii ssp. stewartii inactivated	1 vial (10 tests)
07129NC	Negative Control Pantoea stewartii ssp. stewartii	1 vial (10 tests)

**ELASA KITS**

- **Pectobacterium atrosepticum (Formerly Erwinia carotovora var. atroseptica (Soft rot disease, Blackleg disease, Schwarzbeinigkeit der Kartoffel)**

Catalog No.	Designation	Size
07068S/100	Pectobacterium atrosepticum set / 100	100 tests
07068S/300	Pectobacterium atrosepticum set / 300	100 tests
07068S/500	Pectobacterium atrosepticum set / 500	500 tests
07068S/1000	Pectobacterium atrosepticum set / 1000	1000 tests
07068C/096	Pectobacterium atrosepticum complete kit / 96	96 tests
07068C/480	Pectobacterium atrosepticum complete kit / 480	480 tests
07068C/960	Pectobacterium atrosepticum complete kit / 960	960 tests
07068PC	Positive Control Pectobacterium atrosepticum inactivated	1 vial (10 tests)
07068NC	Negative Control Pectobacterium atrosepticum	1 vial (10 tests)

- **Pseudomonas savastanoi pv. phaseolicola (Pseudomonas syringae pv. phaseolicola, Halo blight of beans)**

Catalog No.	Designation	Size
07070S/100	Pseudomonas sav. pv. phaseolicola set / 100	100 tests
07070S/300	Pseudomonas sav. pv. phaseolicola set / 300	300 tests
07070S/500	Pseudomonas sav. pv. phaseolicola set / 500	500 tests
07070S/1000	Pseudomonas sav. pv. phaseolicola set / 1000	1000 test
07070C/096	Pseudomonas sav. pv. phaseolicola complete kit / 96	96 tests
07070C/480	Pseudomonas sav. pv. phaseolicola complete kit / 480	480 tests
07070C/960	Pseudomonas sav. pv. phaseolicola complete kit / 960	960 tests
07070PC	Positive Control P. sav. pv. phaseolicola inactivated	1 vial (10 tests)
07070NC	Negative Control P. sav. pv. phaseolicola	1 vial (10 tests)

- **Pseudomonas syringae pv. lachrymans (Angular Leaf Disease, Eckige Blattfleckenkrankheit)**

Catalog No.	Designation	Size
07147S/100	Pseudomonas s. pv. lachrymans set / 100	100 tests
07147S/300	Pseudomonas s. pv. lachrymans set / 300	300 tests
07147S/500	Pseudomonas s. pv. lachrymans set / 500	500 tests
07147S/1000	Pseudomonas s. pv. lachrymans set / 1000	1000 tests
07147C/096	Pseudomonas s. pv. lachrymans complete kit / 96	96 tests
07147C/480	Pseudomonas s. pv. lachrymans complete kit / 480	480 tests
07147C/960	Pseudomonas s. pv. lachrymans complete kit / 960	960 tests
07147PC	Positive Control P.s. pv. lachrymans inactivated	1 vial (10 tests)
07147NC	Negative Control P.s.pv. lachrymans	1 vial (10 tests)

**ELASA KITS**

- **Pseudomonas syringae pv. pisi (Bacterial blight of pea)**

Catalog No.	Designation	Size
07071S/100	Pseudomonas s. pv. pisi set / 100	100 tests
07071S/300	Pseudomonas s. pv. pisi set / 300	300 tests
07071S/500	Pseudomonas s. pv. pisi set / 500	500 tests
07071S/1000	Pseudomonas s. pv. pisi set / 1000	1000 tests
07071C/096	Pseudomonas s. pv. pisi complete kit / 96	96 tests
07071C/480	Pseudomonas s. pv. pisi complete kit / 480	480 tests
07071C/960	Pseudomonas s. pv. pisi complete kit / 960	960 tests
07071PC	Positive Control P.s. pv. pisi inactivated	1 vial (10 tests)
07071NC	Negative Control P.s. pv. pisi	1 vial (10 tests)

- **Pseudomonas syringae pv. tomato (Bacterial speck disease of tomatoes)**

Catalog No.	Designation	Size
07139S/100	Pseudomonas s. pv. tomato set / 100	100 tests
07139S/300	Pseudomonas s. pv. tomato set / 300	300 tests
07139S/500	Pseudomonas s. pv. tomato set / 500	500 tests
07139S/1000	Pseudomonas s. pv. tomato set / 1000	1000 tests
07139C/096	Pseudomonas s. pv. tomato complete kit / 96	96 tests
07139C/480	Pseudomonas s. pv. tomato complete kit / 480	480 tests
07139C/960	Pseudomonas s. pv. tomato complete kit / 960	960 tests
07139PC	Positive Control P. s. pv. tomato inactivated	1 vial (10 tests)
07139NC	Negative Control P. s. pv. tomato	1 vial (10 tests)

- **Ralstonia solanacearum**

Catalog No.	Designation	Size
07056S/100	R.solanacearum set / 100	100 tests
07056S/300	R.solanacearum set / 300	300 tests
07056S/500	R.solanacearum set / 500	500 tests
07056S/1000	R.solanacearum set / 1000	1000 tests
07056C/096	R.solanacearum complete kit / 960	96 tests
07056C/480	R.solanacearum complete kit / 480	480 tests
07056C/960	R.solanacearum complete kit / 960	960 tests
07208PC	Positive Control Quarantine RAG Type unspecific	1 vial (10 tests)
07056NC	Negative Control R. solanacearum	1 vial (10 tests)

**ELASA KITS**

- **Rhodococcus fascians (Corynebacterium fascians, Leafy Gall disease)**

Catalog No.	Designation	Size
07170S/100	Rhodococcus fascians set / 100	100 tests
07170S/300	Rhodococcus fascians set / 300	300 tests
07170S/500	Rhodococcus fascians set / 500	500 tests
07170S/1000	Rhodococcus fascians set / 1000	1000 tests
07170C/96	Rhodococcus fascians complete kit / 96	96 tests
07170C/480	Rhodococcus fascians complete kit / 480	480 tests
07170C/960	Rhodococcus fascians complete kit / 960	960 tests
07170PC	Positive Control Rhodococcus fascians inactivated	1 vial (10 tests)
07170NC	Negative Control Rhodococcus fascians	1 vial (10 tests)

- **Xanthomonas arboricola pv. corylina (Bacterial blight of hazelnut)**

Catalog No.	Designation	Size
07178S/100	Xanthomonas a. pv. corylina set / 100	100 tests
07178S/300	Xanthomonas a. pv. corylina set / 300	300 tests
07178S/500	Xanthomonas a. pv. corylina set / 500	500 tests
07178S/1000	Xanthomonas a. pv. corylina set / 1000	1000 tests
07178C/96	Xanthomonas a. pv. corylina complete kit / 96	96 tests
07178C/480	Xanthomonas a. pv. corylina complete kit / 480	480 tests
07178C/960	Xanthomonas a. pv. corylina complete kit / 960	960 tests
07178PC	Positive Control Xanthomonas a. pv. corylina inactivated	1 vial (10 tests)
07178NC	Negative Control Xanthomonas a. pv. corylina	1 vial (10 tests)

- **Xanthomonas axonopodis pv. begoniae (Xanthomonas campestris pv. begoniae. Bacterial leaf and spot blight, Öfleckenkrankheit)**

Catalog No.	Designation	Size
07125S/100	Xanthomonas a. pv. begoniae set / 100	100 tests
07125S/300	Xanthomonas a. pv. begoniae set / 300	300 tests
07125S/500	Xanthomonas a. pv. begoniae set / 500	500 tests
07125S/1000	Xanthomonas a. pv. begoniae set / 1000	1000 tests
07125C/96	Xanthomonas a. pv. begoniae complete kit / 96	96 tests
07125C/480	Xanthomonas a. pv. begoniae complete kit / 480	480 tests
07125C/960	Xanthomonas a. pv. begoniae complete kit / 960	960 tests
07125PC	Positive Control X.a pv. begoniae inactivated	1 vial (10 tests)
07125NC	Negative Control X.a. pv. begoniae	1 vial (10 tests)

**ELASA KITS**

- **Xanthomonas axonopodis pv. phaseoli (Bakterieller Bohnenbrand, Common blight, fuscous blight)**

Catalog No.	Designation	Size
07161S/100	Xanthomonas a. pv. phaseoli set / 100	100 tests
07161S/300	Xanthomonas a. pv. phaseoli set / 300	300 tests
07161S/500	Xanthomonas a. pv. phaseoli set / 500	500 tests
07161S/1000	Xanthomonas a. pv. phaseoli set / 1000	1000 tests
07161C/096	Xanthomonas a. pv. phaseoli complete kit / 96	96 tests
07161C/480	Xanthomonas a. pv. phaseoli complete kit / 480	480 tests
07161C/960	Xanthomonas a. pv. phaseoli complete kit / 960	960 tests
07161PC	Positive Control Xanthomonas a. pv. phaseoli inactivated	1 vial (10 tests)
07161NC	Negative Control Xanthomonas a. pv. phaseoli	1 vial (10 tests)

- **Xanthomonas campestris Lobelia isolate**

Catalog No.	Designation	Size
07124S/100	Xanthomonas c. Lobelia set / 100	100 tests
07125S/300	Xanthomonas c. Lobelia set / 300	300 tests
07124S/500	Xanthomonas c. Lobelia set / 500	500 tests
07124S/1000	Xanthomonas c. Lobelia set / 1000	1000 tests
07124C/096	Xanthomonas c. Lobelia complete kit / 96	96 tests
07124C/480	Xanthomonas c. Lobelia complete kit / 480	480 tests
07124C/960	Xanthomonas c. Lobelia complete kit / 960	960 tests
07124PC	Positive Control Xanthomonas c. Lobelia inactivated	1 vial (10 tests)
07124NC	Negative Control Xanthomonas c. Lobelia	1 vial (10 tests)

- **Xanthomonas campestris pv. campestris (Blackrot disease, Blight and Leafspot Disease, Black Veins)**

Catalog No.	Designation	Size
07122S/100	Xanthomonas c. pv. campestris set / 100	100 tests
07122S/300	Xanthomonas c. pv. campestris set / 300	300 tests
07122S/500	Xanthomonas c. pv. campestris set / 500	500 tests
07122S/1000	Xanthomonas c. pv. campestris set / 1000	1000 tests
07122C/96	Xanthomonas c. pv. campestris complete kit / 96	96 tests
07122C/480	Xanthomonas c. pv. campestris complete kit / 480	480 tests
07122C/960	Xanthomonas c. pv. campestris complete kit / 960	960 tests
07122PC	Positive Control Xanthomonas c. pv. campestris inactivated	1 vial (10 tests)
07122Nc	Negative Control Xanthomonas c. pv. campestris	1 vial (10 tests)

**ELASA KITS**

- **Xanthomonas campestris pv. vesicatoria (Bacterial Spot, Bacterial Scab, Blackspot Disease of tomatoes)**

Catalog No.	Designation	Size
07131S/100	Xanthomonas c. pv. vesicatoria set / 100	100 tests
07131S/300	Xanthomonas c. pv. vesicatoria set / 300	300 tests
07131S/500	Xanthomonas c. pv. vesicatoria set / 500	500 tests
07131S/1000	Xanthomonas c. pv. vesicatoria set / 1000	1000 tests
07131C/096	Xanthomonas c. pv. vesicatoria complete kit / 96	96 tests
07131C/480	Xanthomonas c. pv. vesicatoria complete kit / 480	480 tests
07131C/960	Xanthomonas c. pv. vesicatoria complete kit / 960	960 tests
07131PC	Positive Control Xanthomonas c. pv. vesicatoria inactivated	1 vial (10 tests)
07131NC	Negative Control Xanthomonas c. pv. vesicatoria	1 vial (10 tests)

- **Xanthomonas citri subsp. citri**

Catalog No.	Designation	Size
07102S/100	Xanthomonas citri subsp. citri set / 100	100 tests
07102S/300	Xanthomonas citri subsp. citri set / 300	300 tests
07102S/500	Xanthomonas citri subsp. citri set / 500	500 tests
07098C/096	Xanthomonas citri subsp. citri complete kit / 96	96 tests
07098C/480	Xanthomonas citri subsp. citri complete kit / 480	480 tests
07098C/960	Xanthomonas citri subsp. citri complete kit / 960	960 tests
07102PC	Positive Control Xanthomonas citri subsp. citri	1 vial (10 tests)
07102NC	Negative Control Xanthomonas citri subsp. citri	1 vial (10 tests)

- **Xanthomonas fragariae (Angular Leafspot of strawberry)**

Catalog No.	Designation	Size
07132S/100	Xanthomonas fragariae set / 100	100 tests
07132S/300	Xanthomonas fragariae set / 300	300 tests
07132S/500	Xanthomonas fragariae set / 500	500 tests
07132S/1000	Xanthomonas fragariae set / 1000	1000 tests
07132C/096	Xanthomonas fragariae complete kit / 96	96 tests
07132C/480	Xanthomonas fragariae complete kit / 480	480 tests
07132C/960	Xanthomonas fragariae complete kit / 960	960 tests
07132PC	Positive Control Xanthomonas fragariae inactivated	1 vial (10 tests)
07132NC	Negative Control Xanthomonas fragariae	1 vial (10 tests)

**ELASA KITS**

- **Xanthomonas hortorum pv. pelargonii (Xanthomonas campestris pv. pelargonii)**

Catalog No.	Designation	Size
07077S/100	X. h. pelargonii set / 100	100 tests
07077S/300	X. h. pelargonii set / 300	300 tests
07077S/500	X. h. pelargonii set / 500	500 tests
07077S/1000	X. h. pelargonii set /1000	1000 tests
07077C/096	X. h. pelargonii complete kit / 96	96 tests
07077C/480	X. h. pelargonii complete kit / 480	480 tests
07077C/960	X. h. pelargonii complete kit / 960	960 tests
07077PC	Positive Control X. h. pelargonii inactivated	1 vial (10 tests)
07077NC	Negative Control X. h. pelargonii	1 vial (10 tests)

- **Xanthomonas oryzae pv. oryzae (Pseudomonas oryzae, Xanthomonas oryzae. Bacterial Blight of rice)**

Catalog No.	Designation	Size
07130S/100	Xanthomonas o. pv. oryzae set / 100	100 tests
07130S/300	Xanthomonas o. pv. oryzae set / 300	300 tests
07130S/500	Xanthomonas o. pv. oryzae set / 500	500 tests
07130S/1000	Xanthomonas o. pv. oryzae set / 1000	1000 tests
07130C/096	Xanthomonas o. pv. oryzae complete kit / 96	96 tests
07130C/480	Xanthomonas o. pv. oryzae complete kit / 480	480 tests
07130C/960	Xanthomonas o. pv. oryzae complete kit / 960	960 tests
07210PC	Positive Control Quarantine GAR unspecific	1 vial (10 tests)
07130NC	Negative Control X. o. pv. oryzae	1 vial (10 tests)

- **Xylella fastidiosa (Pierce's Disease)**

Catalog No.	Designation	Size
07119S/100	Xylella fastidiosa set / 100	100 tests
07119S/300	Xylella fastidiosa set / 300	300 tests
07119S/500	Xylella fastidiosa set / 500	500 tests
07119S/1000	Xylella fastidiosa set / 1000	1000 tests
07119C/096	Xylella fastidiosa complete kit / 96	96 tests
07119C/480	Xylella fastidiosa complete kit / 480	480 tests
07119C/960	Xylella fastidiosa complete kit / 960	960 tests
07119PC	Positive Control Xylella fastidiosa inactivated	1 vial (10 tests)
07119NC	Negative Control Xylella fastidiosa	1 vial (10 tests)

**ELASA KITS**

- **Xylophilus ampelinus (Xanthomonas ampelina. Bacterial Blight of grapevine)**

<b>Catalog No.</b>	<b>Designation</b>	<b>Size</b>
07138S/100	Xylophilus ampelinus set / 100	100 tests
07138S/300	Xylophilus ampelinus set / 300	300 tests
07138S/500	Xylophilus ampelinus set / 500	500 tests
07138S/1000	Xylophilus ampelinus set / 1000	1000 tests
07138C/096	Xylophilus ampelinus complete kit / 96	96 tests
07138C/480	Xylophilus ampelinus complete kit / 480	480 tests
07138C/960	Xylophilus ampelinus complete kit / 960	960 tests
07138PC	Positive control X. ampelinus inactivated	1 vial (10 tests)
07138NC	Negative control X. ampelinus	1 vial (10 tests)



## ELISA – CHEMICALS

- **Albumin for ELISA**

Catalog No.	Designation	Size
00103/025	Albumin for ELISA	25g
00103/100	Albumin for ELISA	100g

- **Blocking Milk powder**

Catalog No.	Designation	Size
00104/001	Blocking Milk powder	1kg

- **Citrus Buffers**

Catalog No.	Designation	Size
B-KBC	Citrus Buffers	500
B-KAC	Citrus Buffers	1000

- **Coating Buffer powder**

Catalog No.	Designation	Size
07600/001	Coating Buffer powder	1 liter

- **Conjugate/Sample Buffer LOEWE II powder**

Catalog No.	Designation	Size
07615/001	Conjugate/Sample Buffer LOEWE II powder	1 liter

- **Conjugate/Sample Buffer powder**

Catalog No.	Designation	Size
07601/001	Conjugate/Sample Buffer powder	1 liter

- **Extraction Buffer LOEWE I powder**

Catalog No.	Designation	Size
07613/001	Extraction Buffer LOEWE I powder	1 liter

- **Fruit tree Buffers**

Catalog No.	Designation	Size
B-KB	Fruit tree Buffers	500
B-KA	Fruit tree Buffers	1000

**ELISA KITS**

- **Grapevine Buffers**

Catalog No.	Designation	Size
B-KBV	Grapevine Buffers	500
B-KAV	Grapevine Buffers	1000
B-S01B	Grapevine Buffers	2500
B-S-01A	Grapevine Buffers	5000

- **Grapevine extraction**

Catalog No.	Designation	Size
B-EV	Grapevine extraction	2 Liters

- **4-Nitrophenylphosphate Na<sub>2</sub>-salt**

Catalog No.	Designation	Size
00130/005	4-Nitrophenylphosphate Na <sub>2</sub> -salt	5g
00130/025	4-Nitrophenylphosphat Na <sub>2</sub> -salt	25g

- **Polyvinylpyrrolidone K25**

Catalog No.	Designation	Size
00134/001	Polyvinylpyrrolidone K25	1kg

- **Substrate Buffer 5X liquid**

Catalog No.	Designation	Size
07602/025	Substrate Buffer 5X liquid	25 ml
07602/100	Substrate Buffer 5X liquid	100 ml

- **Substrate Tablets**

Catalog No.	Designation	Size
07617/005	Substrate Tablets 5 mg	5 tablets
07617/010	Substrate Tablets 5 mg	10 tablets
07614/005	Substrate Tablets 20 mg	5 tablets
07614/010	Substrate Tablets 20 mg	10 tablets

- **Tween 20® ELISA grade**

Catalog No.	Designation	Size
00131/100	Tween 20® ELISA grade	100 ml

Catalog No.	Designation	Size
07603/005	Wash Buffer Powder	5 liter

## ELISA – CONTROLS

- Grapevine Negative Control

Catalog No.	Designation	Size
NC	Grapevine Negative Control	200 uL

- Grapevine Positive Control

Catalog No.	Designation	Size
PC	Grapevine Positive Control	200 uL

## **ELISA – DISPOSABLES**

- **ELISA Plates Greiner Microlon 600 High Binding**

<b>Catalog No.</b>	<b>Designation</b>	<b>Size</b>
07803/05	ELISA Plates Greiner Microlon 600 High Binding	5 pieces
07803/10	ELISA Plates Greiner Microlon 600 High Binding	10 pieces
07803/100	ELISA Plates Greiner Microlon 600 High Binding	100 pieces

- **ELISA Plates Nunc™ Maxisorp**

<b>Catalog No.</b>	<b>Designation</b>	<b>Size</b>
07800/05	ELISA Plates Nunc™ Maxisorp	5 pieces
07800/10	ELISA Plates Nunc™ Maxisorp	10 pieces
07800/60	ELISA Plates Nunc™ Maxisorp	60 pieces

- **ELISA Sealing Tapes for Nunc™ and Greiner plates**

<b>Catalog No.</b>	<b>Designation</b>	<b>Size</b>
07802/010	ELISA Sealing Tapes for Nunc™ and Greiner plates	10 tapes
07802/100	ELISA Sealing Tapes for Nunc™ and Greiner plates	100 tapes

## ELISA – FUNGI

- **Botrytis cinerea grapevine isolate (Grey Mold, Grauschimmel)**

Catalog No.	Designation	Size
07158S/100	Botrytis cinerea set / 100	100 tests
07158S/300	Botrytis cinerea set / 300	300 tests
07158S/500	Botrytis cinerea set / 500	500 tests
07158S/1000	Botrytis cinerea set / 1000	1000 tests
07158C/096	Botrytis cinerea complete kit Loeweblue / 96	96 tests
07158C/480	Botrytis cinerea complete kit Loeweblue / 480	480 tests
07158C/960	Botrytis cinerea complete kit Loeweblue / 960	960 tests
07158PC	Positive Control Botrytis cinerea	1 vial (10 tests)
07158NC	Negative Control Botrytis cinerea	1 vial (10 tests)

- **Phytophthora spec**

Catalog No.	Designation	Size
07079S/100	Phytophthora spec.set / 100	100 tests
07079S/300	Phytophthora spec.set / 300	300 tests
07079S/500	Phytophthora spec.set / 500	500 tests
07079S/1000	Phytophthora spec.set / 1000	1000 tests
07079C/096	Phytophthora spec.complete kit / 96	96 tests
07079C/480	Phytophthora spec.complete kit / 480	480 tests
07079C/960	Phytophthora spec.complete kit / 960	960 tests
07079PC	Positive Control Phytophthora	1 vial (10 tests)
07079NC	Negative Control Phytophthora	1 vial (10 tests)

- **Pythium spec.**

Catalog No.	Designation	Size
07148S/100	Pythium spec. set / 100	100 tests
07148S/300	Pythium spec. set / 300	300 tests
07148S/500	Pythium spec. set / 500	500 tests
07148S/1000	Pythium spec. set / 1000	1000 tests
07148C/096	Pythium spec. complete kit / 96	96 tests
07148C/480	Pythium spec. complete kit / 480	480 tests
07148C/960	Pythium spec. complete kit / 960	960 tests
07148PC	Positive Control Pythium spec.	1 vial (10 tests)
07148NC	Negative Control Pythium spec.	1 vial (10 tests)

**ELASA KITS**

- **Rhizoctonia solani**

<b>Catalog No.</b>	<b>Designation</b>	<b>Size</b>
07157S/100	Rhizoctonia solani set / 100	100 tests
07157S/300	Rhizoctonia solani set / 300	300 tests
07157S/500	Rhizoctonia solani set / 500	500 tests
07157S/1000	Rhizoctonia solani set / 1000	1000 tests
07157C/096	Rhizoctonia solani complete kit / 96	96 tests
07157C/480	Rhizoctonia solani complete kit / 480	480 tests
07157C/960	Rhizoctonia solani complete kit / 960	960 tests
07157PC	Positive Control Rhizoctonia solani	1 vial (10 tests)
07157NC	Negative Control Rhizoctonia solani	1 vial (10 tests)

## ELISA – VIRUSES

- **Alfalfa Mosaic Alfamovirus. (AMV) (Lucerne Mosaic Virus, Potato Calico Virus)**

Catalog No.	Designation	Size
07001S/100	Alfalfa Mosaic Virus set / 100	100 tests
07001S/300	Alfalfa Mosaic Virus set / 300	300 tests
07001S/500	Alfalfa Mosaic Virus set / 500	500 tests
07001S/1000	Alfalfa Mosaic Virus set / 1000	1000 tests
07001S/5000	Alfalfa Mosaic Virus set / 5000	5000 tests
07001C/096	Alfalfa Mosaic Virus complete kit / 96	96 tests
07001C/480	Alfalfa Mosaic Virus complete kit / 480	480 tests
07001C/960	Alfalfa Mosaic Virus complete kit / 960	960 tests
07001PC	Positive Control Alfalfa Mosaic Virus	1 vial (10 tests)
07001NC	Negative Control Alfalfa Mosaic Virus	1 vial (10 tests)

- **Andean Potato Latent Tymovirus. (APLV) (Potato Andean Latent Virus)**

Catalog No.	Designation	Size
07164S/100	Andean Potato Latent Virus set / 100	100 tests
07164S/300	Andean Potato Latent Virus set / 300	300 tests
07164S/500	Andean Potato Latent Virus set / 500	500 tests
07164S/1000	Andean Potato Latent Virus set / 1000	1000 tests
07164C/096	Andean Potato Latent Virus complete kit / 96	96 tests
07164C/480	Andean Potato Latent Virus complete kit / 480	480 tests
07164C/960	Andean Potato Latent Virus complete kit / 960	960 tests
07210PC	Positive Control Quarantine GAR unspecific	1 vial (10 tests)
07164NC	Negative Control Andean Potato Latent Virus	1 vial (10 tests)

- **Andean Potato Mottle Comovirus. (APMoV) (Potato Andean Mottle Virus)**

Catalog No.	Designation	Size
07160S/100	Andean Potato Mottle Virus set / 100	100 tests
07160S/300	Andean Potato Mottle Virus set / 300	300 tests
07160S/500	Andean Potato Mottle Virus set / 500	500 tests
07160S/1000	Andean Potato Mottle Virus set / 1000	1000 tests
07160C/096	Andean Potato Mottle Virus complete kit / 96	96 tests
07160C/480	Andean Potato Mottle Virus complete kit / 480	480 tests
07160C/960	Andean Potato Mottle Virus complete kit / 960	960 tests
07210PC	Positive Control Quarantine GAR unspecific	1 vial (10 tests)
07160NC	Negative Control Andean Potato Mottle Virus	1 vial (10 tests)

**ELASA KITS**

- **Apple Chlorotic Leafspot Trichovirus. (ACLSV) (Apple Latent Virus Type 1, Plum Pseudopox Virus, Quince Stunt Virus)**

Catalog No.	Designation	Size
07003S/100	Apple Chlorotic Leafspot Virus set / 100	100 tests
07003S/300	Apple Chlorotic Leafspot Virus set / 300	300 tests
07003S/500	Apple Chlorotic Leafspot Virus set / 500	500 tests
07003C/096	Apple Chlorotic Leafspot Virus complete kit / 96	96 tests
07003C/480	Apple Chlorotic Leafspot Virus complete kit / 480	480 tests
07003PC	Positive Control Apple Chlorotic Leafspot Virus	1 vial (10 tests)
07003NC	Negative Control Apple Chlorotic Leafspot Virus	1 vial (10 tests)

- **Apple Mosaic Ilarvirus hop isolate. (ApMV) (Birch Line Pattern Virus, Hop A Virus, Rose Mosaic Virus)**

Catalog No.	Designation	Size
07054S/100	Apple Mosaic Virus set / 100	100 tests
07054S/300	Apple Mosaic Virus set / 300	300 tests
07054S/500	Apple Mosaic Virus set / 500	500 tests
07054S/1000	Apple Mosaic Virus set / 1000	1000 tests
07054C/096	Apple Mosaic Virus complete kit / 96	96 tests
07054C/480	Apple Mosaic Virus complete kit / 480	480 tests
07054C7960	Apple Mosaic Virus complete kit / 960	960 tests
07054PC	Positive Control Apple Mosaic Virus	1 vial (10 tests)
07054NC	Negative Control Apple Mosaic Virus	1 vial (10 tests)

- **Apple Mosaic Virus (ApMv)**

Catalog No.	Designation	Size
K-15B	Apple Mosaic Virus set / 500	500 tests
K-15A	Apple Mosaic Virus set / 1000	1000 tests

- **Virus Apple Stem Grooving Capillovirus. (ASGV) (Brown Line Disease Virus, Citrus Tatterleaf Virus, Virginia Crab Stem Grooving Virus)**

Catalog No.	Designation	Size
07085S/100	Apple Stem Grooving Virus set / 100	100 tests
07085S/300	Apple Stem Grooving Virus set / 300	300 tests
07085S/500	Apple Stem Grooving Virus set / 500	500 tests
07085C/096	Apple Stem Grooving Virus complete kit / 96	96 tests
07085C/480	Apple Stem Grooving Virus complete kit / 480	480 tests
07085PC	Positive Control Apple Stem Grooving Virus	1 vial (10 tests)
07085NC	Negative Control Apple Stem Grooving Virus	1 vial (10 tests)



**ELASA KITS**

- **Arabis Mosaic Nepovirus. (ArMV)**

Catalog No.	Designation	Size
07053S/100	Arabis Mosaic Virus set / 100	100 tests
07053S/300	Arabis Mosaic Virus set / 300	300 tests
07053S/500	Arabis Mosaic Virus set / 500	500 tests
07053S/1000	Arabis Mosaic Virus set / 1000	1000 tests
07053C/096	Arabis Mosaic Virus complete kit / 96	96 tests
07053C/480	Arabis Mosaic Virus complete kit / 480	480 tests
07053C/960	Arabis Mosaic Virus complete kit / 960	960 tests
07053PC	Positive Control Arabis Mosaic Virus inactivated	1 vial (10 tests)
07053NC	Negative Control Arabis Mosaic Virus	1 vial (10 tests)

- **Arabis Mosaic Virus (ArMV)**

Catalog No.	Designation	Size
K-02B	Arabis Mosaic Virus set / 500	500 tests
K-02A	Arabis Mosaic Virus set / 1000	1000 tests

- **Arabis Mosaic Virus + Grapevine FanLeaf Virus (ArMV+GFLV)**

Catalog No.	Designation	Size
K-0201B	Arabis Mosaic Virus + Grapevine FanLeaf Virus set / 500	500 tests
K-0201A	Arabis Mosaic Virus + Grapevine FanLeaf Virus set / 1000	1000 tests

- **Barley Mild Mosaic Bymovirus. (BaMMV)**

Catalog No.	Designation	Size
07006S/100	Barley Mild Mosaic Virus set / 100	100 tests
07006S/300	Barley Mild Mosaic Virus set / 300	300 tests
07006S/500	Barley Mild Mosaic Virus set / 500	500 tests
07006C/096	Barley Mild Mosaic Virus complete kit / 96	96 tests
07006C/480	Barley Mild Mosaic Virus complete kit / 480	480 tests
07006PC	Positive Control Barley Mild Mosaic Virus	1 vial (10 tests)
07006NC	Negative Control Barley Mild Mosaic Virus	1 vial (10 tests)

- **Barley Stripe Mosaic Hordeivirus. (BSMV) (Barley False Stripe Mosaic Virus, Barley Yellow Stripe Virus, Oat Stripe Mosaic Virus)**

Catalog No.	Designation	Size
07004S/100	Barley Stripe Mosaic Virus set / 100	100 tests
07004S/300	Barley Stripe Mosaic Virus set / 300	300 tests
07004S/500	Barley Stripe Mosaic Virus set / 500	500 tests
07004C/096	Barley Stripe Mosaic Virus complete kit / 96	96 tests
07004C/480	Barley Stripe Mosaic Virus complete kit / 480	480 tests
07004PC	Positive Control Barley Stripe Mosaic Virus	1 vial (10 tests)
07004NC	Negative Control Barley Stripe Mosaic Virus	1 vial (10 tests)

**ELASA KITS**

- **Barley Yellow Dwarf Luteovirus (PAV, MAV, BYDV) (Oat Red Leaf Virus, Rice Giallume Virus, Ryegrass Chlorotic Streak Virus)**

Catalog No.	Designation	Size
07005S/100	Barley Yellow Dwarf Virus PAV/MAV set / 100	100 tests
07005S/300	Barley Yellow Dwarf Virus PAV/MAV set / 300	300 tests
07005S/500	Barley Yellow Dwarf Virus PAV/MAV set / 500	500 tests
07005C/096	Barley Yellow Dwarf Virus PAV/MAV complete kit / 96	96 tests
07005C/480	Barley Yellow Dwarf Virus PAV/MAV complete kit / 480	480 tests
07005PC	Positive Control Barley Yellow Dwarf Virus PAV/MAV	1 vial (10 tests)
07005NC	Negative Control Barley Yellow Dwarf Virus PAV/MAV	1 vial (10 tests)

- **Barley Yellow Mosaic Bymovirus. (BaYMV)**

Catalog No.	Designation	Size
07076S/100	Barley Yellow Mosaic Virus set / 100	100 tests
07076S/300	Barley Yellow Mosaic Virus set / 300	300 tests
07076S/500	Barley Yellow Mosaic Virus set / 500	500 tests
07076C/096	Barley Yellow Mosaic Virus complete kit / 96	96 tests
07076C/480	Barley Yellow Mosaic Virus complete kit / 480	480 tests
07076PC	Positive Control Barley Yellow Mosaic Virus	1 vial (10 tests)
07076NC	Negative Control Barley Yellow Mosaic Virus	1 vial (10 tests)

- **Bean Common Mosaic Necrosis Potyvirus. (BCMNV) (Bean Common Mosaic Virus Serotype A)**

Catalog No.	Designation	Size
07114S/100	Bean Common Mosaic Necrosis Virus set / 100	100 tests
07114S/300	Bean Common Mosaic Necrosis Virus set / 300	300 tests
07114S/500	Bean Common Mosaic Necrosis Virus set / 500	500 tests
07114C/096	Bean Common Mosaic Necrosis Virus complete kit / 96	96 tests
07114C/480	Bean Common Mosaic Necrosis Virus complete kit / 480	480 tests
07114PC	Positive Control Bean Common Mosaic Necrosis Virus	1 vial (10 tests)
07114NC	Negative Control Bean Common Mosaic Necrosis Virus	1 vial (10 tests)

- **Bean Common Mosaic Potyvirus (BCMV)**

Catalog No.	Designation	Size
07172S/100	Bean Common Mosaic Virus set / 100	100 tests
07172S/300	Bean Common Mosaic Virus set / 300	300 tests
07172S/500	Bean Common Mosaic Virus set / 500	500 tests
07172C/096	Bean Common Mosaic Virus complete kit / 96	96 tests
07172C/480	Bean Common Mosaic Virus complete kit / 480	480 tests
07172PC	Positive Control Bean Common Mosaic Virus	1 vial (10 tests)
07172NC	Negative Control Bean Common Mosaic Virus	1 vial (10 tests)

**ELASA KITS**

- **Bean Yellow Mosaic Potyvirus. (BYMV) (Bean Virus 2, Canna Mosaic Virus, Croatian Clover Mosaic Virus)**

Catalog No.	Designation	Size
07007S/100	Bean Yellow Mosaic Virus set / 100	100 tests
07007S/300	Bean Yellow Mosaic Virus set / 300	300 tests
07007S/500	Bean Yellow Mosaic Virus set / 500	500 tests
07007S/1000	Bean Yellow Mosaic Virus set / 1000	1000 tests
07007C/096	Bean Yellow Mosaic Virus complete kit / 96	96 tests
07007C/480	Bean Yellow Mosaic Virus complete kit / 480	480 tests
07007C/960	Bean Yellow Mosaic Virus complete kit / 960	960 tests
07007PC	Positive Control Bean Yellow Mosaic Virus	1 vial (10 tests)
07007NC	Negative Control Bean Yellow Mosaic Virus	1 vial (10 tests)

- **Beet Black Scorch Tombusvirus. (BBSV)**

Catalog No.	Designation	Size
07250S/100	Beet Black Scorch Virus set / 100	100 tests
07250S/300	Beet Black Scorch Virus set / 300	300 tests
07250S/500	Beet Black Scorch Virus set / 500	500 tests
07250C/096	Beet Black Scorch Virus complete kit /96	96 tests
07250C/480	Beet Black Scorch Virus complete kit /480	480 tests
07250PC	Positive Control Beet Black Scorch Virus	1 vial (10 tests)
07250NC	Negative Control Beet Black Scorch Virus	1 vial (10 tests)

- **Beet Mosaic Potyvirus. (BtMV) (Spinach Mosaic Virus, Sugar Beet Mosaic Virus)**

Catalog No.	Designation	Size
07010S/100	Beet Mosaic Virus set / 100	100 tests
07010S/300	Beet Mosaic Virus set / 300	300 tests
07010S/500	Beet Mosaic Virus set / 500	500 tests
07010S/1000	Beet Mosaic Virus set / 1000	1000 tests
07010C/096	Beet Mosaic Virus complete kit / 96	96 tests
07010C/480	Beet Mosaic Virus complete kit /480	480 tests
07010C/960	Beet Mosaic Virus complete kit / 960	960 tests
07010PC	Positive Control Beet Mosaic Virus	1 vial (10 tests)
07010NC	Negative Control Beet Mosaic Virus	1 vial (10 tests)

- **Beet Necrotic Yellow Vein Benyvirus. (BNYVV) (Rizomania, Rübenwurzelbärtigkeitsvirus)**

Catalog No.	Designation	Size
07011S/100	Beet Necrotic Yellow Vein Virus set / 100	100 tests
07011S/300	Beet Necrotic Yellow Vein Virus set / 300	300 tests
07011S/500	Beet Necrotic Yellow Vein Virus set / 500	500 tests
07011C/096	Beet Necrotic Yellow Vein Virus complete kit / 96	96 tests
07011C/480	Beet Necrotic Yellow Vein Virus complete kit / 480	480 tests
07011PC	Positive Control Beet Necrotic Yellow Vein Virus	1 vial (10 tests)
07011NC	Negative Control Beet Necrotic Yellow Vein Virus	1 vial (10 tests)

**ELASA KITS**

- **Beet Yellows Closterovirus. (BYV) (Sugarbeet Yellows Virus)**

Catalog No.	Designation	Size
07012S/100	Beet Yellows Virus set / 100	100 tests
07012S/300	Beet Yellows Virus set / 300	300 tests
07012S/500	Beet Yellows Virus set / 500	500 tests
07012C/096	Beet Yellows Virus complete kit / 96	96 tests
07012C/480	Beet Yellows Virus complete kit / 480	480 tests
07012PC	Positive Control Beet Yellows Virus	1 vial (10 tests)
07012NC	Negative Control Beet Yellows Virus	1 vial (10 tests)

- **Broad Bean Wilt Fabavirus I. (BBWV I)**

Catalog No.	Designation	Size
07015S/100	Broad Bean Wilt Virus I set / 100	100 tests
07015S/300	Broad Bean Wilt Virus I set / 300	300 tests
07015S/500	Broad Bean Wilt Virus I set / 500	500 tests
07015S/1000	Broad Bean Wilt Virus I set / 1000	1000 tests
07015C/096	Broad Bean Wilt Virus I complete kit / 96	96 tests
07015C/480	Broad Bean Wilt Virus I complete kit / 480	480 tests
07015C/960	Broad Bean Wilt Virus I complete kit / 960	960 tests
07015PC	Positive Control Broad Bean Wilt Virus I	1 vial (10 tests)
07015NC	Negative Control Broad Bean Wilt Virus I	1 vial (10 tests)

- **Broad Bean Wilt Fabavirus II. (BBWV II) (Broad Bean Wilt Virus, Plantago II virus, Patchouli Mild Mosaic Virus)**

Catalog No.	Designation	Size
07017S/100	Broad Bean Wilt Virus II set / 100	100 tests
07017S/300	Broad Bean Wilt Virus II set / 300	300 tests
07017S/500	Broad Bean Wilt Virus II set / 500	500 tests
07017S/1000	Broad Bean Wilt Virus II set / 1000	1000 tests
07017C/096	Broad Bean Wilt Virus II complete kit / 96	96 tests
07017C/480	Broad Bean Wilt Virus II complete kit / 480	480 tests
07017C/960	Broad Bean Wilt Virus II complete kit / 960	960 tests
07017PC	Positive Control Broad Bean Wilt Virus II	1 vial (10 tests)
07017NC	Negative Control Broad Bean Wilt Virus II	1 vial (10 tests)

- **Brome Mosaic Bromovirus. (BMV) (Ryegrass Streak Virus, Trespenmosaikvirus, Weidelgrasmosaikvirus)**

Catalog No.	Designation	Size
07016S/100	Brome Mosaic Virus set / 100	100 tests
07016S/300	Brome Mosaic Virus set / 300	300 tests
07016S/500	Brome Mosaic Virus set / 500	500 tests
07016S/1000	Brome Mosaic Virus set / 1000	1000 tests
07016C/096	Brome Mosaic Virus complete kit / 96	96 tests
07016C/480	Brome Mosaic Virus complete kit / 480	480 tests
07016C/960	Brome Mosaic Virus complete kit / 960	960 tests

**ELASA KITS**

07016PC	Positive Control Brome Mosaic Virus	1 vial (10 tests)
07016NC	Negative Control Brome Mosaic Virus	1 vial (10 tests)

- **Brome Streak Mosaic Tritimovirus. (BStMV) (Brome Streak Virus)**

Catalog No.	Designation	Size
07123S/100	Brome Streak Mosaic Virus set / 100	100 tests
07123S/300	Brome Streak Mosaic Virus set / 300	300 tests
07123S/500	Brome Streak Mosaic Virus set / 500	500 tests
07123C/096	Brome Streak Mosaic Virus complete kit / 96	96 tests
07123C/480	Brome Streak Mosaic Virus complete kit / 480	480 tests
07123PC	Positive Control Brome Streak Mosaic Virus	1 vial (10 tests)
07123NC	Negative Control Brome Streak Mosaic Virus	1 vial (10 tests)

- **Calibrachoa Mottle Carmovirus. (CbMV)**

Catalog No.	Designation	Size
07008S/100	Calibrachoa Mottle Virus set /100	100 tests
07008S/300	Calibrachoa Mottle Virus set / 300	300 tests
07008S/500	Calibrachoa Mottle Virus set / 500	500 tests
07008C/096	Calibrachoa Mottle Virus complete kit / 96	96 tests
07008C/480	Calibrachoa Mottle Virus complete kit / 480	480 tests
07008PC	Positive Control Calibrachoa Mottle Virus	1 vial (10 tests)
07008NC	Negative Control Calibrachoa Mottle Virus	1 vial (10 tests)

- **Carnation Latent Carlavirus. (CLV) (Dulcamara A Virus, Dulcamara B Virus (Phillips and Brunt, 1981))**

Catalog No.	Designation	Size
07078S/100	Carnation Latent Virus set / 100	100 tests
07078S/300	Carnation Latent Virus set / 300	300 tests
07078S/500	Carnation Latent Virus set / 500	500 tests
07078C/096	Carnation Latent Virus complete kit /96	96 tests
07078C/480	Carnation Latent Virus complete kit / 480	480 tests
07078PC	Positive Control Carnation Latent Virus	1 vial (10 tests)
07078NC	Negative Control Carnation Latent Virus	1 vial (10 tests)

- **Carnation Mottle Carmovirus. (CarMV) (Carmovirus)**

Catalog No.	Designation	Size
07057S/100	Carnation Mottle Virus set / 100	100 tests
07057S/300	Carnation Mottle Virus set / 300	300 tests
07057S/500	Carnation Mottle Virus set / 500	500 tests
07057C/096	Carnation Mottle Virus complete kit / 96	96 tests
07057C/480	Carnation Mottle Virus complete kit / 480	480 tests
07057PC	Positive Control Carnation Mottle Virus	1 vial (10 tests)
07057NC	Negative Control Carnation Mottle Virus	1 vial (10 tests)

**ELASA KITS**

- **Carnation Ringspot Dianthovirus. (CRSV)**

Catalog No.	Designation	Size
07019S/100	Carnation Ringspot Virus set / 100	100 tests
07019S/300	Carnation Ringspot Virus set / 300	300 tests
07019S/500	Carnation Ringspot Virus set / 500	500 tests
07019C/096	Carnation Ringspot Virus complete kit / 96	96 tests
07019C/480	Carnation Ringspot Virus complete kit / 480	480 tests
07019PC	Positive Control Carnation Ringspot Virus	1 vial (10 tests)
07019NC	Negative Control Carnation Ringspot Virus	1 vial (10 tests)

- **Carnation Vein Mottle Potyvirus. (CVMV)**

Catalog No.	Designation	Size
07020S/100	Carnation Vein Mottle Virus set / 100	100 tests
07020S/300	Carnation Vein Mottle Virus set / 300	300 tests
07020S/500	Carnation Vein Mottle Virus set / 500	500 tests
07020C/096	Carnation Vein Mottle Virus complete kit / 96	96 tests
07020C/480	Carnation Vein Mottle Virus complete kit / 480	480 tests
07020PC	Positive Control Carnation Vein Mottle Virus	1 vial (10 tests)
07020NC	Negative Control Carnation Vein Mottle Virus	1 vial (10 tests)

- **Celery Mosaic Potyvirus. (CeMV)**

Catalog No.	Designation	Size
07072S/100	Celery Mosaic Virus set / 100	100 tests
07072S/300	Celery Mosaic Virus set / 300	300 tests
07072S/500	Celery Mosaic Virus set / 500	500 tests
07072C/096	Celery Mosaic Virus complete kit / 96	96 tests
07072C/480	Celery Mosaic Virus complete kit / 480	480 tests
07072PC	Positive Control Celery Mosaic Virus	1 vial (10 tests)
07072NC	Negative Control Celery Mosaic Virus	1 vial (10 tests)

- **Cherry Leafroll Nepovirus birch isolate. (CLRV)**

Catalog No.	Designation	Size
07093S/100	Cherry Leafroll Virus b set / 100	100 tests
07093S/300	Cherry Leafroll Virus b set / 300	300 tests
07093S/500	Cherry Leafroll Virus b set / 500	500 tests
07093S/1000	Cherry Leafroll Virus b set / 1000	1000 tests
07093C/096	Cherry Leafroll Virus b complete kit / 96	96 tests
07093C/480	Cherry Leafroll Virus b complete kit / 480	480 tests
07093C/960	Cherry Leafroll Virus b complete kit / 960	960 tests
07093PC	Positive Control Cherry Leafroll Virus b inactivated	1 vial (10 tests)
07093NC	Negative Control Cherry Leafroll Virus b	1 vial (10 tests)

**ELASA KITS**

- **Chilli Veinal Mottle Potyvirus. (ChiVMV)**

Catalog No.	Designation	Size
07185S/100	Chilli Veinal Mottle Virus set / 100	100 tests
07185S/300	Chilli Veinal Mottle Virus set / 300	300 tests
07185S/500	Chilli Veinal Mottle Virus set / 500	500 tests
07185C/096	Chilli Veinal Mottle Virus complete kit / 96	96 tests
07185C/480	Chilli Veinal Mottle Virus complete kit / 480	480 tests
07185PC	Positive Control Chilli Veinal Mottle Virus	1 vial (10 tests)
07185NC	Negative control Chilli Veinal Mottle Virus	1 vial (10 tests)

- **Chrysanthemum Carlavirus B. (CVB)**

Catalog No.	Designation	Size
07021S/100	Chrysanthemum Virus B set / 100	100 tests
07021S/300	Chrysanthemum Virus B set / 300	300 tests
07021S/500	Chrysanthemum Virus B set / 500	500 tests
07021C/096	Chrysanthemum Virus B complete kit / 96	96 tests
07021C/480	Chrysanthemum Virus B complete kit / 480	480 tests
07021PC	Positive Control Chrysanthemum Virus B	1 vial (10 tests)
07021NC	Negative Control Chrysanthemum Virus B	1 vial (10 tests)

- **Citrus Psorosis Virus (CPsV psorosis)**

Catalog No.	Designation	Size
K-17B	Citrus Psorosis Virus set / 500	500 tests
K-17A	Citrus Psorosis Virus set / 1000	1000 tests

- **Citrus Tristeza Closterovirus. (CTV)07022**

**(Citrus Quick Decline Virus, Hassaku Dwarf Lime Dieback Virus)**

Catalog No.	Designation	Size
07099S/100	Citrus Tristeza Virus set / 100	100 tests
07099S/300	Citrus Tristeza Virus set / 300	300 tests
07099S/500	Citrus Tristeza Virus set / 500	500 tests
07099S/1000	Citrus Tristeza Virus set / 1000	1000 tests
07099C/096	Citrus Tristeza Virus complete kit / 96	96 tests
07099C/480	Citrus Tristeza Virus complete kit / 480	480 tests
07099C/960	Citrus Tristeza Virus complete kit / 960	960 tests
07099PC	Positive Control Citrus Tristeza Virus inactivated	1 vial (10 tests)
07099NC	Negative Control Citrus Tristeza Virus	1 vial (10 tests)

**ELASA KITS**

- **Citrus Tristeza Virus (CTV Tristeza)**

Catalog No.	Designation	Size
K-16B	Citrus Tristeza Virus set / 500	500 tests
K-16A	Citrus Tristeza Virus set / 1000	1000 tests

- **Cowpea Mild Mottle Carlavirus. (CPMMV) (Bean Angular Mosaic Virus, Voandezia Mosaic Virus, Groundnut Crinkle Virus)**

Catalog No.	Designation	Size
07166S/100	Cowpea Mild Mottle Virus set / 300	100 tests
07166S/300	Cowpea Mild Mottle Virus set / 300	300 tests
07166S/500	Cowpea Mild Mottle Virus set / 500	500 tests
07166C/096	Cowpea Mild Mottle Virus complete kit / 96	96 tests
07166C/480	Cowpea Mild Mottle Virus complete kit / 480	480 tests
07210PC	Positive Control Quarantine GAR unspecific	1 vial (10 tests)
07166NC	Negative Control Cowpea Mild Mottle Virus	1 vial (10 tests)

- **Cucumber Green Mottle Mosaic Tobamovirus. (CGMMV)**

Catalog No.	Designation	Size
07022S/100	Cucumber Green Mottle Mosaic Virus set / 100	100 tests
07022S/300	Cucumber Green Mottle Mosaic Virus set / 300	300 tests
07022S/500	Cucumber Green Mottle Mosaic Virus set / 500	500 tests
07022S/1000	Cucumber Green Mottle Mosaic Virus set / 1000	1000 tests
07022S/5000	Cucumber Green Mottle Mosaic Virus set / 5000	5000 tests
07022C/096	Cucumber Green Mottle Mosaic Virus complete kit / 96	96 tests
07022C/480	Cucumber Green Mottle Mosaic Virus complete kit / 480	480 tests
07022C/960	Cucumber Green Mottle Mosaic Virus complete kit / 960	960 tests
07022PC	Positive Control Cucumber Green Mottle Mosaic Virus	1 vial (10 tests)
07022NC	Negative Control Cucumber Green Mottle Mosaic Virus	1 vial (10 tests)

- **Cucumber Mosaic Cucumovirus DTL. (CMV DTL)**

Catalog No.	Designation	Size
07014S/100	Cucumber Mosaic Virus DTL set / 100	100 tests
07014S/300	Cucumber Mosaic Virus DTL set / 300	300 tests
07014S/500	Cucumber Mosaic Virus DTL set / 500	500 tests
07014C/096	Cucumber Mosaic Virus DTL complete kit / 96	96 tests
07014C/480	Cucumber Mosaic Virus DTL complete kit / 480	480 tests
07014PC	Positive Control Cucumber Mosaic Virus DTL	1 vial (10 tests)
07014NC	Negative Control Cucumber Mosaic Virus DTL	1 vial (10 tests)



**ELASA KITS**

- **Cucumber Mosaic Cucumovirus DTL/ToRS (Banana Infectious Chlorosis Virus, Cowpea Banding Mosaic Virus, Cowpea Ringspot Virus)**

Catalog No.	Designation	Size
07108S/100	Cucumber Mosaic Virus DTL/ToRS set / 100	100 tests
07108S/300	Cucumber Mosaic Virus DTL/ToRS set / 300	300 tests
07108S/500	Cucumber Mosaic Virus DTL/ToRS set / 500	500 tests
07108S/1000	Cucumber Mosaic Virus DTL/ToRS set / 1000	1000 tests
07108S/5000	Cucumber Mosaic Virus DTL/ToRS set / 5000	5000 tests
07108C/096	Cucumber Mosaic Virus DTL/ToRS complete kit / 96	96 tests
07108C/480	Cucumber Mosaic Virus DTL/ToRS complete kit / 480	480 tests
07108C/960	Cucumber Mosaic Virus DTL/ToRS complete kit / 960	960 tests
07014PC	Positive Control Cucumber Mosaic Virus DTL	1 vial (10 tests)
07108NC	Negative Control Cucumber Mosaic Virus	1 vial (10 tests)

- **Cucumber Mosaic Cucumovirus. (CMV ToRS)**

Catalog No.	Designation	Size
07023S/100	Cucumber Mosaic Virus ToRS set / 100	100 tests
07023S/300	Cucumber Mosaic Virus ToRS set / 300	300 tests
07023S/500	Cucumber Mosaic Virus ToRS set / 500	500 tests
07023C/096	Cucumber Mosaic Virus ToRS complete kit / 96	96 tests
07023C/480	Cucumber Mosaic Virus ToRS complete kit / 480	480 tests
07023PC	Positive Control Cucumber Mosaic Virus DTL	1 vial (10 tests)
07023NC	Negative Control Cucumber Mosaic Virus	1 vial (10 tests)

- **Cucurbit Chlorotic Yellows Crinivirus. (CCYV)**

Catalog No.	Designation	Size
07075S/100	Cucurbit Chlorotic Yellows Virus / 100	100 tests
07075S/300	Cucurbit Chlorotic Yellows Virus / 300	300 tests
07075S/500	Cucurbit Chlorotic Yellows Virus / 500	500 tests
07075C/96	Cucurbit Chlorotic Yellows Virus complete kit / 96	96 tests
07075C/480	Cucurbit Chlorotic Yellows Virus complete kit / 480	480 tests
07075PC	Positive Control Cucurbit Chlorotic Yellows Virus	1 vial (10 tests)
07075NC	Negative Control Cucurbit Chlorotic Yellows Virus	1 vial (10 tests)

- **Cucurbit Yellow Stunting Disorder Crinivirus. (CYSDV)**

Catalog No.	Designation	Size
07155S/100	Cucurbit Yellow Stunting Disorder virus set / 100	100 tests
07155S/300	Cucurbit Yellow Stunting Disorder virus set / 300	300 tests
07155S/500	Cucurbit Yellow Stunting Disorder virus set / 500	500 tests
07155C/096	Cucurbit Yellow Stunting Disorder virus complete kit / 96	96 tests
07155C/480	Cucurbit Yellow Stunting Disorder virus complete kit / 480	480 tests
07155PC	Positive Control Cucurbit Yellow Stunting Disorder Virus	1 vial (10 tests)
07155NC	Negative Control Cucurbit Yellow Stunting Disorder Virus	1 vial (10 tests)

**ELASA KITS**

- **Cymbidium Mosaic Potexvirus. (CymMV) (Orchid Mosaic Virus)**

Catalog No.	Designation	Size
07018S/100	Cymbidium Mosaic Virus set / 100	100 tests
07018S/300	Cymbidium Mosaic Virus set / 300	300 tests
07018S/500	Cymbidium Mosaic Virus set / 500	500 tests
07018S/1000	Cymbidium Mosaic Virus set / 1000	1000 tests
07018C/096	Cymbidium Mosaic Virus complete kit / 96	96 tests
07018C/480	Cymbidium Mosaic Virus complete kit / 480	480 tests
07018C/960	Cymbidium Mosaic Virus complete kit / 960	960 tests
07018PC	Positive Control Cymbidium Mosaic Virus	1 vial (10 tests)
07018NC	Negative Control Cymbidium Mosaic Virus	1 vial (10 tests)

- **Cymbidium Ringspot Tombusvirus. (CymRSV)**

Catalog No.	Designation	Size
07024S/100	Cymbidium Ringspot Virus set / 100	100 tests
07024S/300	Cymbidium Ringspot Virus set / 300	300 tests
07024S/500	Cymbidium Ringspot Virus set / 500	500 tests
07024C/096	Cymbidium Ringspot Virus complete kit / 96	96 tests
07024C/480	Cymbidium Ringspot Virus complete kit / 480	480 tests
07024PC	Positive Control Cymbidium Ringspot Virus	1 vial (10 tests)
07024NC	Negative Control Cymbidium Ringspot Virus	1 vial (10 tests)

- **Eggplant Mottled Dwarf Nucleorhabdovirus. (EMDV)**

Catalog No.	Designation	Size
07169S/100	Eggplant Mottled Dwarf Virus set / 100	100 tests
07169S/300	Eggplant Mottled Dwarf Virus set / 300	300 tests
07169S/500	Eggplant Mottled Dwarf Virus set / 500	500 tests
07169C/096	Eggplant Mottled Dwarf Virus complete kit / 96	96 tests
07169C/480	Eggplant Mottled Dwarf Virus complete kit / 480	480 tests
07169PC	Positive Control Eggplant Mottled Dwarf V.	1 vial (10 tests)
07169NC	Negative Control Eggplant Mottled Dwarf V.	1 vial (10 tests)

- **Freesia Mosaic Potyvirus. (FreMV)**

Catalog No.	Designation	Size
07025S/100	Freesia Mosaic Virus set / 100	100 tests
07025S/300	Freesia Mosaic Virus set / 300	300 tests
07025S/500	Freesia Mosaic Virus set / 500	500 tests
07025C/096	Freesia Mosaic Virus complete kit / 96	96 tests
07025C/480	Freesia Mosaic Virus complete kit / 480	480 tests
07025PC	Positive Control Freesia Mosaic Virus	1 vial (10 tests)
07025NC	Negative Control Freesia Mosaic Virus	1 vial (10 tests)

**ELASA KITS**

- **Grapevine Algerian Latent Tombusvirus. (GALV)**

Catalog No.	Designation	Size
07092S/100	Grapevine Algerian Latent Virus set /100	100 tests
07092S/300	Grapevine Algerian Latent Virus set /300	300 tests
07092S/500	Grapevine Algerian Latent Virus set / 500	500 tests
07092S/1000	Grapevine Algerian Latent Virus set / 1000	1000 tests
07092C/096	Grapevine Algerian Latent Virus complete kit / 96	96 tests
07092C/480	Grapevine Algerian Latent Virus complete kit / 480	480 tests
07092C/960	Grapevine Algerian Latent Virus complete kit / 960	960 tests
07092PC	Positive Control Grapevine Algerian Latent Virus	1 vial (10 tests)
07092NC	Negative Control Grapevine Algerian Latent Virus	1 vial (10 tests)

- **Grapevine Crown Mosaic Virus (GCMV)**

Catalog No.	Designation	Size
K-22B	Grapevine Crown Mosaic Virus set / 500	500 tests
K-22A	Grapevine Crown Mosaic Virus set / 1000	1000 tests

- **Grapevine Fanleaf Nepovirus. (GFLV)**

Catalog No.	Designation	Size
07055S/100	Grapevine Fanleaf Virus set / 100	100 tests
07055S/300	Grapevine Fanleaf Virus set / 300	300 tests
07055S/500	Grapevine Fanleaf Virus set / 500	500 tests
07055S/1000	Grapevine Fanleaf Virus set / 1000	1000 tests
07055C/096	Grapevine Fanleaf Virus complete kit / 96	96 tests
07055C/480	Grapevine Fanleaf Virus complete kit / 480	480 tests
07055C/960	Grapevine Fanleaf Virus complete kit / 960	960 tests
07055PC	Positive Control Grapevine Fanleaf Virus inactivated	1 vial (10 tests)
07055NC	Negative Control Grapevine Fanleaf Virus	1 vial (10 tests)

- **Grapevine FanLeaf Virus (GFLV)**

Catalog No.	Designation	Size
K-01B	Grapevine FanLeaf Virus set / 500	500 tests
K-01A	Grapevine FanLeaf Virus set / 1000	1000 tests

- **Grapevine Fleck Virus (GFkV) DAS ELISA**

Catalog No.	Designation	Size
K-25B	Grapevine Fleck Virus set / 500	500 tests
K-25A	Grapevine Fleck Virus set / 1000	1000 tests

- **Grapevine Fleck Virus (GFkV) DASI ELISA**

Catalog No.	Designation	Size
K-09B	Grapevine Fleck Virus set / 500	500 tests
K-09A	Grapevine Fleck Virus set / 1000	1000 tests

**ELISA KITS**

- **Grapevine LeafRoll associated Virus 1 (GLRaV-1)**

Catalog No.	Designation	Size
K-03B	Grapevine LeafRoll associated Virus 1 set / 500	500 tests
K-03A	Grapevine LeafRoll associated Virus 1 set / 1000	1000 tests

- **Grapevine LeafRoll associated Virus 2 (GLRaV-2)**

Catalog No.	Designation	Size
K-04B	Grapevine LeafRoll associated Virus 2 set / 500	500 tests
K-04A	Grapevine LeafRoll associated Virus 2 set / 1000	1000 tests

- **Grapevine LeafRoll Associated Virus 3 (Ampelovirus)**

Catalog No.	Designation	Size
07190S/100	GLRaV-3 set 100	100 tests
07190S/300	GLRaV-3 set 300	300 tests
07190S/500	GLRaV-3 set 500	500 tests
07190S/1000	GLRaV-3 set / 1000	1000 tests
07190S/5000	GLRaV-3 set / 5000	5000 tests
07190C/096	GLRaV-3 complete kit / 96	96 tests
07190C/480	GLRaV-3 complete kit / 480	480 tests
07190C/960	GLRaV-3 complete kit / 960	960 tests
07190PC	Positive Control GLRaV-3	1 vial (10 tests)
07190NC	Negative Control GLRaV-3	1 vial (10 tests)

- **Grapevine LeafRoll associated Virus 3 (GLRaV-3)**

Catalog No.	Designation	Size
K-05B	Grapevine LeafRoll associated Virus 3 set / 500	500 tests
K-05A	Grapevine LeafRoll associated Virus 3 set / 1000	1000 tests

- **Grapevine LeafRoll associated Virus 7 (GLRaV-7)**

Catalog No.	Designation	Size
K-06B	Grapevine LeafRoll associated Virus 7 set / 500	500 tests
K-06A	Grapevine LeafRoll associated Virus 7 set / 1000	1000 tests

- **Grapevine Leafroll associated Virus-7. GLRaV-7 tentative Velarivirus (GLRaV-7)**

Assay type: DAS ELISA using polyclonal antibodies ex rabbit.

Host range: grapevine

Catalog # 07197

**ELASA KITS**

- **Grapevine Virus A (GVA)**

Catalog No.	Designation	Size
K-07B	Grapevine Virus A set / 500	500 tests
K-07A	Grapevine Virus A set / 1000	1000 tests

- **Grapevine Virus B (GVB)**

Catalog No.	Designation	Size
K-08B	Grapevine Virus B set / 500	500 tests
K-08A	Grapevine Virus B set / 1000	1000 tests

- **Hop Mosaic Carlavirus. (HpMV)**

Catalog No.	Designation	Size
07105S/100	Hop Mosaic Virus set / 100	100 tests
07105S/300	Hop Mosaic Virus set / 300	300 tests
07105S/500	Hop Mosaic Virus set / 500	500 tests
07105S/1000	Hop Mosaic Virus set / 1000	1000 test
07105C/096	Hop Mosaic Virus complete kit / 96	96 tests
07105C/480	Hop Mosaic Virus complete kit / 480	480 tests
07105C/960	Hop Mosaic Virus complete kit / 960	960 tests
07105PC	Positive Control Hop Mosaic Virus	1 vial (10 tests)
07105NC	Negative Control Hop Mosaic Virus	1 vial (10 tests)

- **Hydrangea Ringspot Potexvirus. (HRSV)**

Catalog No.	Designation	Size
07026S/100	Hydrangea Ringspot Virus set / 100	100 tests
07026S/300	Hydrangea Ringspot Virus set / 300	300 tests
07026S/500	Hydrangea Ringspot Virus set / 500	500 tests
07026C/096	Hydrangea Ringspot Virus complete kit / 96	96 tests
07026C/480	Hydrangea Ringspot Virus complete kit / 480	480 tests
07026PC	Positive Control Hydrangea Ringspot Virus	1 vial (10 tests)
07026NC	Negative Control Hydrangea Ringspot Virus	1 vial (10 tests)

- **Impatiens Necrotic Spot Tospovirus. (INSV) (INSV serogroup, former serogroup)**

Catalog No.	Designation	Size
07505S/100	Impatiens Necrotic Spot Virus set / 100	100 tests
07505S/300	Impatiens Necrotic Spot Virus set / 300	300 tests
07505S/500	Impatiens Necrotic Spot Virus set / 500	500 tests
07505S/1000	Impatiens Necrotic Spot Virus set / 1000	1000 test
07505C/096	Impatiens Necrotic Spot Virus complete kit / 96	96 tests
07505C/480	Impatiens Necrotic Spot Virus complete kit / 480	480 tests
07505C/960	Impatiens Necrotic Spot Virus complete kit / 960	960 tests
07505PC	Positive Control Impatiens Necrotic Spot Virus	1 vial (10 tests)
07505NC	Negative Control Impatiens Necrotic Spot Virus	1 vial (10 tests)

**ELASA KITS**

- **Iris Yellow Spot Tospovirus. (IYSV) (Tospovirus former serogroup V)**

Catalog No.	Designation	Size
07508S/100	Iris Yellow Spot Virus set / 100	100 tests
07508S/300	Iris Yellow Spot Virus set / 300	300 tests
07508S/500	Iris Yellow Spot Virus set / 500	500 tests
07508S/1000	Iris Yellow Spot Virus set / 1000	1000 test
07508C/096	Iris Yellow Spot Virus complete kit / 96	96 tests
07508C/480	Iris Yellow Spot Virus complete kit / 480	480 tests
07508C/960	Iris Yellow Spot Virus complete kit / 960	960 tests
07508PC	Positive Control Iris Yellow Spot Virus	1 vial (10 tests)
07508NC	Negative Control Iris Yellow Spot Virus	1 vial (10 tests)

- **Johnson Grass Mosaic Potyvirus. (JGMV) (Maize Dwarf Mosaic Virus O)**

Catalog No.	Designation	Size
07107S/100	Johnson Grass Mosaic Virus set / 100	100 tests
07107S/300	Johnson Grass Mosaic Virus set / 300	300 tests
07107S/500	Johnson Grass Mosaic Virus set / 500	500 tests
07107S/1000	Johnson Grass Mosaic Virus set / 1000	1000 tests
07107C/096	Johnson Grass Mosaic Virus complete kit / 96	96 tests
07107C/480	Johnson Grass Mosaic Virus complete kit / 480	480 tests
07107C/960	Johnson Grass Mosaic Virus complete kit / 960	960 tests
07107PC	Positive Control Johnson Grass Mosaic Virus	1 vial (10 tests)
07107NC	Negative Control Johnson Grass Mosaic Virus	1 vial (10 tests)

- **Lettuce Mosaic Potyvirus. (LMV) (Lactuca Virus 1)**

Catalog No.	Designation	Size
07027S/100	Lettuce Mosaic Virus set / 100	100 tests
07027S/300	Lettuce Mosaic Virus set / 300	300 tests
07027S/500	Lettuce Mosaic Virus set / 500	500 tests
07027C/096	Lettuce Mosaic Virus complete kit / 96	96 tests
07027C/480	Lettuce Mosaic Virus complete kit / 480	480 tests
07027PC	Positive Control Lettuce Mosaic Virus	1 vial (10 tests)
07027NC	Negative Control Lettuce Mosaic Virus	1 vial (10 tests)

**ELASA KITS**

- **Lettuce Necrotic Stunt Tombusvirus. (LNSV)**

Catalog No.	Designation	Size
07183S/100	Lettuce Necrotic Stunt Virus set / 100	100 tests
07183S/300	Lettuce Necrotic Stunt Virus set / 300	300 tests
07183S/500	Lettuce Necrotic Stunt Virus set / 500	500 tests
07183S/1000	Lettuce Necrotic Stunt Virus set / 1000	1000 tests
07183C/096	Lettuce Necrotic Stunt Virus complete kit / 96	96 tests
07183C/480	Lettuce Necrotic Stunt Virus complete kit / 480	480 tests
07183C/960	Lettuce Necrotic Stunt Virus complete kit / 960	960 tests
07183PC	Positive Control Lettuce Necrotic Stunt Virus	1 vial (10 tests)
07183NC	Negative Control Lettuce Necrotic Stunt Virus	1 vial (10 tests)

- **Maize Dwarf Mosaic Potyvirus. (MDMV) (MDMV-A, MDMV-D, MDMV-E, MDMV-F)**

Catalog No.	Designation	Size
07059S/100	Maize Dwarf Virus set / 100	100 tests
07059S/300	Maize Dwarf Virus set / 300	300 tests
07059S/500	Maize Dwarf Virus set / 500	500 tests
07059S/1000	Maize Dwarf Virus set / 1000	1000 tests
07059C/096	Maize Dwarf Virus complete kit / 96	96 tests
07059C/480	Maize Dwarf Virus complete kit / 480	480 tests
07059C/960	Maize Dwarf Virus complete kit / 960	960 tests
07059PC	Positive Control Maize Dwarf Virus	1 vial (10 tests)
07059NC	Negative Control Maize Dwarf Virus	1 vial (10 tests)

- **Melon Necrotic Spot Carmovirus. (MNSV)**

Catalog No.	Designation	Size
07097S/100	Melon Necrotic Spot Virus set / 100	100 tests
07097S/300	Melon Necrotic Spot Virus set / 300	300 tests
07097S/500	Melon Necrotic Spot Virus set / 500	500 tests
07097S/1000	Melon Necrotic Spot Virus set / 1000	1000 tests
07097S/5000	Melon Necrotic Spot Virus set / 5000	5000 tests
07097C/096	Melon Necrotic Spot Virus complete kit / 96	96 tests
07097C/480	Melon Necrotic Spot Virus complete kit / 480	480 tests
07097C/960	Melon Necrotic Spot Virus complete kit / 960	960 tests
07097PC	Positive Control Melon Necrotic Spot Virus	1 vial (10 tests)
07097NC	Negative Control Melon Necrotic Spot Virus	1 vial (10 tests)

**ELASA KITS**

- **Mirafiori Lettuce Big-Vein Ophiovirus. (MiLBVV)**

Catalog No.	Designation	Size
07149S/100	Mirafiori Lettuce Big-Vein Virus set / 100	100 tests
07149S/300	Mirafiori Lettuce Big-Vein Virus set / 300	300 tests
07149S/500	Mirafiori Lettuce Big-Vein Virus set / 500	500 tests
07149C/096	Mirafiori Lettuce Big-Vein Virus complete kit / 96	96 tests
07149C/480	Mirafiori Lettuce Big-Vein Virus complete kit / 480	480 tests
07149PC	Positive Control Mirafiori Lettuce Big-Vein Virus	1 vial (10 tests)
07149NC	Negative Control Mirafiori Lettuce Big-Vein Virus	1 vial (10 tests)

- **Moroccan Watermelon Mosaic Potyvirus. (MWMV)**

Catalog No.	Designation	Size
07156S/100	Moroccan Watermelon Mosaic Virus set / 100	100 tests
07156S/300	Moroccan Watermelon Mosaic Virus set / 300	300 tests
07156S/500	Moroccan Watermelon Mosaic Virus set / 500	500 tests
07156C/096	Moroccan Watermelon Mosaic Virus complete kit / 96	96 tests
07156C/480	Moroccan Watermelon Mosaic Virus complete kit / 480	480 tests
07156PC	Positive Control Moroccan Watermelon Mosaic Virus	1 vial (10 tests)
07156NC	Negative Control Moroccan Watermelon Mosaic Virus	1 vial (10 tests)

- **Myrobalan Latent Ringspot Virus (MLRSV)**

Catalog No.	Designation	Size
K-23B	Myrobalan Latent Ringspot Virus set / 500	500 tests
K-23A	Myrobalan Latent Ringspot Virus set / 1000	1000 tests

- **Nemesia Ring Necrosis Tymovirus. (NeRNV)**

Catalog No.	Designation	Size
07098S7100	Nemesia Ring Necrosis Virus set / 100	100 tests
07098S/300	Nemesia Ring Necrosis Virus / 300	300 tests
07098S/500	Nemesia Ring Necrosis Virus / 500	500 tests
07098C/096	Nemesia Ring Necrosis Virus complete kit /96	96 tests
07098C/480	Nemesia Ring Necrosis Virus complete kit / 480	480 tests
07098PC	Positive Control Nemesia Ring Necrosis Virus	1 vial (10 tests)
07098NC	Negative Control Nemesia Ring Necrosis Virus	1 vial (10 tests)

- **Odontoglossum Ringspot Tobamovirus. (ORSV) (Tobacco Mosaic Virus orchid strain)**

Catalog No.	Designation	Size
07028S/100	Odontoglossum Ringspot Virus set / 100	100 tests
07028S/300	Odontoglossum Ringspot Virus set / 300	300 tests
07028S/500	Odontoglossum Ringspot Virus set / 500	500 tests
07028C/096	Odontoglossum Ringspot Virus complete kit / 96	96 tests
07028C/480	Odontoglossum Ringspot Virus complete kit / 480	480 tests
07028PC	Positive Control Odontoglossum Ringspot Virus	1 vial (10 tests)
07028NC	Negative Control Odontoglossum Ringspot Virus	1 vial (10 tests)



**ELASA KITS**

- **Olive Latent Necrovirus -1. (OLV-1)**

<b>Catalog No.</b>	<b>Designation</b>	<b>Size</b>
07151S/100	Olive Latent Virus I set / 100	100 tests
07151S/300	Olive Latent Virus I set / 300	300 tests
07151S/500	Olive Latent Virus I set / 500	500 tests
07151S/1000	Olive Latent Virus I set / 1000	1000 tests
07151C/096	Olive Latent Virus I complete kit / 96	96 tests
07151C/480	Olive Latent Virus I complete kit / 480	480 tests
07151C/960	Olive Latent Virus I complete kit / 960	960 tests
07051PC	Positive Control Olive Latent Virus I	1 vial (10 tests)
07151NC	Negative Control Olive Latent Virus I	1 vial (10 tests)

- **Onion Yellow Dwarf Potyvirus. (OYDV) (Allium Virus 1)**

<b>Catalog No.</b>	<b>Designation</b>	<b>Size</b>
07111S/100	Onion Yellow Dwarf Virus set / 100	100 tests
07111S/300	Onion Yellow Dwarf Virus set / 300	300 tests
07111S/500	Onion Yellow Dwarf Virus set / 500	500 tests
07111C/096	Onion Yellow Dwarf Virus complete kit / 96	96 tests
07111C/480	Onion Yellow Dwarf Virus complete kit / 480	480 tests
07111PC	Positive Control Onion Yellow Dwarf Virus	1 vial (10 tests)
07111NC	Negative Control Onion Yellow Dwarf Virus	1 vial (10 tests)

- **Papaya Ringspot Potyvirus. (PRSV) (Watermelon Mosaic Virus I, Papaya Distortion Mosaic Virus)**

<b>Catalog No.</b>	<b>Designation</b>	<b>Size</b>
07060S/100	Papaya Ringspot Virus set / 100	100 tests
07060S/300	Papaya Ringspot Virus set / 300	300 tests
07060S/500	Papaya Ringspot Virus set / 500	500 tests
07060S/1000	Papaya Ringspot Virus set / 1000	1000 tests
07060C/096	Papaya Ringspot Virus complete kit / 96	96 tests
07060C/480	Papaya Ringspot Virus complete kit / 480	480 tests
07060C/960	Papaya Ringspot Virus complete kit / 960	960 tests
07060PC	Positive Control Papaya Ringspot Virus	1 vial (10 tests)
07060NC	Negative Control Papaya Ringspot Virus	1 vial (10 tests)

**ELASA KITS**

- **Paprika Mild Mottle Tobamovirus. (PaMMV) (Tobacco Mosaic Virus P1 isolate)**

Catalog No.	Designation	Size
07065S/100	Paprika Mild Mottle Virus set / 100	100 tests
07065S/300	Paprika Mild Mottle Virus set / 300	300 tests
07065S/500	Paprika Mild Mottle Virus set / 500	500 tests
07065/1000	Paprika Mild Mottle Virus set / 1000	1000 tests
07065C/96	Paprika Mild Mottle Virus complete kit / 96	96 tests
07065C/480	Paprika Mild Mottle Virus complete kit / 480	480 tests
07065C/960	Paprika Mild Mottle Virus complete kit / 960	960 tests
07065PC	Positive Control Paprika Mild Mottle Virus	1 vial (10 tests)
07065NC	Negative Control Paprika Mild Mottle Virus	1 vial (10 tests)

- **Pea Enation Mosaic Enamovirus. (PEMV) (Enation Pea Mosaic Virus)**

Catalog No.	Designation	Size
07029S/100	Pea Enation Mosaic Virus set / 100	100 tests
07029S/300	Pea Enation Mosaic Virus set / 300	300 tests
07029S/500	Pea Enation Mosaic Virus set / 500	500 tests
07029C/96	Pea Enation Mosaic Virus complete kit / 96	96 tests
07029C/480	Pea Enation Mosaic Virus complete kit / 480	480 tests
07029PC	Positive Control Pea Enation Mosaic Virus	1 vial (10 tests)
07029NC	Negative Control Pea Enation Mosaic Virus	1 vial (10 tests)

- **Pea Necrotic Yellow Dwarf Nanovirus. (PNYDV)**

Catalog No.	Designation	Size
07112S/100	Pea Necrotic Yellow Dwarf Virus set / 100 tests	100 tests
07112S/300	Pea Necrotic Yellow Dwarf Virus set / 300 tests	300 tests
07112S/500	Pea Necrotic Yellow Dwarf Virus set / 500 tests	500 tests
07112C/96	Pea Necrotic Yellow Dwarf Virus complete kit /96 tests	96 tests
07112C/480	Pea Necrotic Yellow Dwarf Virus complete kit /480 tests	480 tests
07112PC	Positive Control Pea Necrotic Yellow Dwarf Virus	1 vial (10 tests)
07112NC	Negative Control Pea Necrotic Yellow Dwarf Virus	1 vial (10 tests)

- **Pea Seed-borne Mosaic Potyvirus. (PSBMV)**

Catalog No.	Designation	Size
07030S/100	Pea Seed-borne Mosaic Virus set / 100	100 tests
07030S/300	Pea Seed-borne Mosaic Virus set / 300	300 tests
07030S/500	Pea Seed-borne Mosaic Virus set / 500	500 tests
07030C/96	Pea Seed-borne Mosaic Virus complete kit / 96	96 tests
07030C/480	Pea Seed-borne Mosaic Virus complete kit / 480	480 tests
07030PC	Positive Control Pea Seed-borne Mosaic Virus	1 vial (10 tests)
07030NC	Negative Control Pea Seed-borne Mosaic Virus	1 vial (10 tests)

**ELASA KITS**

- **Pelargonium Flower Break Carmovirus. (PFBMV)**

Catalog No.	Designation	Size
07073S/100	Pelargonium Flower Break Virus set / 100	100 tests
07073S/300	Pelargonium Flower Break Virus set / 300	300 tests
07073S/500	Pelargonium Flower Break Virus set / 500	500 tests
07073C/096	Pelargonium Flower Break Virus complete kit / 96	96 tests
07073C/480	Pelargonium Flower Break Virus complete kit / 480	480 tests
07073PC	Positive Control Pelargonium Flower Break Virus	1 vial (10 tests)
07073NC	Negative Control Pelargonium Flower Break Virus	1 vial (10 tests)

- **Pelargonium Leafcurl Tombusvirus. (PLCV) (Geranium Crinkle Virus, Tomato Bushy Stunt Virus Pelargonium strain)**

Catalog No.	Designation	Size
07083S/100	Pelargonium Leafcurl Virus set / 100	100 tests
07083S/300	Pelargonium Leafcurl Virus set / 300	300 tests
07083S/500	Pelargonium Leafcurl Virus set / 500	500 tests
07083C/096	Pelargonium Leafcurl Virus complete kit / 96	96 tests
07083C/480	Pelargonium Leafcurl Virus complete kit / 480	480 tests
07083PC	Positive Control Pelargonium Leafcurl Virus	1 vial (10 tests)
07083NC	Negative Control Pelargonium Leafcurl Virus	1 vial (10 tests)

- **Pelargonium Line Pattern Carmovirus. (PLPV) (Pelargonium Ring Pattern Virus)**

Catalog No.	Designation	Size
07094S/100	Pelargonium Line Pattern Virus set / 100	100 tests
07094S/300	Pelargonium Line Pattern Virus set / 300	300 tests
07094S/500	Pelargonium Line Pattern Virus set / 500	500 tests
07094C/096	Pelargonium Line Pattern Virus complete kit / 96	96 tests
07094C/480	Pelargonium Line Pattern Virus complete kit / 480	480 tests
07094PC	Positive Control Pelargonium Line Pattern Virus	1 vial (10 tests)
07094NC	Negative Control Pelargonium Line Pattern Virus	1 vial (10 tests)

- **Pepino Mosaic Potexvirus. (PepMV)**

Catalog No.	Designation	Size
07128S/100	Pepino Mosaic Virus set / 100	100 tests
07128S/300	Pepino Mosaic Virus set / 300	300 tests
07128S/500	Pepino Mosaic Virus set / 500	500 tests
07128S/1000	Pepino Mosaic Virus set / 1000	1000 tests
07128S/5000	Pepino Mosaic Virus set / 5000	5000 tests
07128C/096	Pepino Mosaic Virus complete kit / 96	96 tests
07128C/480	Pepino Mosaic Virus complete kit / 480	480 tests
07128C/960	Pepino Mosaic Virus complete kit / 960	960 tests
07128PC	Positive Control Pepino Mosaic Virus inactivated	1 vial (10 tests)
07128NC	Negative Control Pepino Mosaic Virus	1 vial (10 tests)

**ELASA KITS**

- **Pepper Mild Mottle Tobamovirus. (PMMoV) (Pepper Mosaic Virus)**

Catalog No.	Designation	Size
07096S/100	Pepper Mild Mottle Virus set / 100	100 tests
07096S/300	Pepper Mild Mottle Virus set / 300	300 tests
07096S/500	Pepper Mild Mottle Virus set / 500	500 tests
07096S/1000	Pepper Mild Mottle Virus set / 1000	1000 tests
07096S/5000	Pepper Mild Mottle Virus set / 5000	5000 tests
07096C/096	Pepper Mild Mottle Virus complete kit / 96	96 tests
07096C/480	Pepper Mild Mottle Virus complete kit / 480	480 tests
07096C/960	Pepper Mild Mottle Virus complete kit / 960	960 tests
07096PC	Positive Control Pepper Mild Mottle Virus	1 vial (10 tests)
07096NC	Negative Control Pepper Mild Mottle Virus	1 vial (10 tests)

- **Pepper Mottle Potyvirus. (PepMoV) (Chilli Mottle Virus)**

Catalog No.	Designation	Size
07050S/100	Pepper Mottle Virus set / 100	100 tests
07050S/300	Pepper Mottle Virus set / 300	300 tests
07050S/500	Pepper Mottle Virus set / 500	500 tests
07050C/96	Pepper Mottle Virus complete kit / 96	96 tests
07050C/480	Pepper Mottle Virus complete kit / 480	480 tests
07050PC	Positive Control Pepper Mottle Virus	1 vial (10 tests)
07050NC	Negative Control Pepper Mottle Virus	1 vial (10 tests)

- **Pepper Veinal Mottle Potyvirus. (PVMV)**

Catalog No.	Designation	Size
07159S/100	Pepper Veinal Mottle Virus set / 100	100 tests
07159S/300	Pepper Veinal Mottle Virus set / 300	300 tests
07159S/500	Pepper Veinal Mottle Virus set / 500	500 tests
07159S/1000	Pepper Veinal Mottle Virus set / 1000	1000 tests
07159C/096	Pepper Veinal Mottle Virus complete kit / 96	96 tests
07159C/480	Pepper Veinal Mottle Virus complete kit / 480	480 tests
07159C/960	Pepper Veinal Mottle Virus complete kit / 960	960 tests
07159PC	Positive Control Pepper Veinal Mottle Virus	1 vial (10 tests)
07159NC	Negative Control Pepper Veinal Mottle Virus	1 vial (10 tests)

**ELASA KITS**

- **Petunia Asteroid Mosaic Tombusvirus. (PeAMV) (Tomato Bushy Stunt Virus Petunia strain)**

Catalog No.	Designation	Size
07061S/100	Petunia Asteroid Mosaic Virus set / 100	100 tests
07061S/300	Petunia Asteroid Mosaic Virus set / 300	300 tests
07061S/500	Petunia Asteroid Mosaic Virus set / 500	500 tests
07061S/1000	Petunia Asteroid Mosaic Virus set / 1000	1000 tests
07061C/096	Petunia Asteroid Mosaic Virus complete kit / 96	96 tests
07061C/480	Petunia Asteroid Mosaic Virus complete kit / 480	480 tests
07061C/960	Petunia Asteroid Mosaic Virus complete kit / 960	960 tests
07061PC	Positive Control Petunia Asteroid Mosaic Virus	1 vial (10 tests)
07061NC	Negative Control Petunia Asteroid Mosaic Virus	1 vial (10 tests)

- **Plum Bark Necrosis Stem Pitting-associated Virus (PBNSPaV)**

Catalog No.	Designation	Size
K-20B	Plum Bark Necrosis Stem Pitting-associated Virus set / 500	500 tests
K-20A	Plum Bark Necrosis Stem Pitting-associated Virus set / 1000	1000 tests

- **Plum Pox Potyvirus D. (PPV D)**

Catalog No.	Designation	Size
07163S/100	Plum Pox Virus D set / 100	100 tests
07163S/300	Plum Pox Virus D set / 300	300 tests
07163S/500	Plum Pox Virus D set / 500	500 tests
07163C/096	Plum Pox Virus D complete kit / 96	96 tests
07163C/480	Plum Pox Virus D complete kit / 480	480 tests
07163PC	Positive Control Plum Pox Virus D	1 vial (10 tests)
07163NC	Negative Control Plum Pox Virus D	1 vial (10 tests)

- **Plum Pox Potyvirus universal - improved specificity. (PPV Scharka Virus)**

Catalog No.	Designation	Size
07186S/100	Plum Pox Virus - universal set / 100	100 tests
07186S/300	Plum Pox Virus - universal set / 300	300 tests
07186S/500	Plum Pox Virus - universal set / 500	500 tests
07186S/1000	Plum Pox Virus - universal set / 1000	1000 tests
07186C/096	Plum Pox Virus - universal complete kit / 96	96 tests
07186C/480	Plum Pox Virus - universal complete kit / 480	480 tests
07186C/960	Plum Pox Virus - universal complete kit / 960	960 tests
07186PC	Positive Control Plum Pox Virus inactivated	1 vial (10 tests)
07186NC	Negative control Plum Pox Virus - universal	1 vial (10 tests)

**ELASA KITS**

- **Plum Pox Virus (PPV)**

Catalog No.	Designation	Size
K-21B	Plum Pox Virus set / 500	500 tests
K-21A	Plum Pox Virus set / 1000	1000 tests

- **Plum Pox Virus-Cherry (PPV Cherry)**

Catalog No.	Designation	Size
K-14B	Plum Pox Virus-Cherry set / 500	500 tests
K-14A	Plum Pox Virus-Cherry set / 1000	1000 tests

- **Plum Pox Virus-Dideron (PPV Dideron)**

Catalog No.	Designation	Size
K-12B	Plum Pox Virus-Dideron set / 500	500 tests
K-12A	Plum Pox Virus-Dideron set / 1000	1000 tests

- **Plum Pox Virus-El Amar (PPV El Amar)**

Catalog No.	Designation	Size
K-13B	Plum Pox Virus- El Amar set / 500	500 tests
K-13A	Plum Pox Virus- El Amar set / 1000	1000 tests

- **Plum Pox Virus-Marcus (PPV Marcus)**

Catalog No.	Designation	Size
K-11B	Plum Pox Virus- Marcus set / 500	500 tests
K-11A	Plum Pox Virus- Marcus set / 1000	1000 tests

- **Plum Pox Virus-Universal (PPV Universal)**

Catalog No.	Designation	Size
K-10B	Plum Pox Virus- Universal set / 500	500 tests
K-10A	Plum Pox Virus- Universal set / 1000	1000 tests

- **Poinsettia Mosaic Marafivirus. (PnMV)**

Catalog No.	Designation	Size
07109S/100	Poinsettia Mosaic Virus set / 100	100 tests
07109S/300	Poinsettia Mosaic Virus set / 300	300 tests
07109S/500	Poinsettia Mosaic Virus set / 500	500 tests
07109C/096	Poinsettia Mosaic Virus complete kit / 96	96 tests
07109C/480	Poinsettia Mosaic Virus complete kit / 480	480 tests
07109PC	Positive Control Poinsettia Mosaic Virus	1 vial (10 tests)
07109NC	Negative Control Poinsettia Mosaic Virus	1 vial (10 tests)

**ELASA KITS**

- **Poplar Mosaic Carlavirus. (PopMV) (Canadian Poplar Mosaic Virus, Poplar Latent Virus)**

<b>Catalog No.</b>	<b>Designation</b>	<b>Size</b>
07039S/100	Poplar Mosaic Virus set / 100	100 tests
07039S/300	Poplar Mosaic Virus set / 300	300 tests
07039S/500	Poplar Mosaic Virus set / 500	500 tests
07039C/096	Poplar Mosaic Virus complete kit / 96	96 tests
07039C/480	Poplar Mosaic Virus complete kit / 480	480 tests
07039PC	Positive Control Poplar Mosaic Virus	1 vial (10 tests)
07039NC	Negative Control Poplar Mosaic Virus	1 vial (10 tests)

- **Potato A Potyvirus. (PVA) (Potato Mild Mosaic Virus, Potato Virus P, Solanum Virus 3)**

<b>Catalog No.</b>	<b>Designation</b>	<b>Size</b>
07032S/100	Potato Virus A set / 100	100 tests
07032S/500	Potato Virus A set / 500	500 tests
07032S/1000	Potato Virus A set / 1000	1000 tests
07032S/5000	Potato Virus A set / 5000	5000 tests
07032C/096	Potato Virus A complete kit / 96	96 tests
07032C/480	Potato Virus A complete kit / 480	480 tests
07032C/960	Potato Virus A complete kit / 960	960 tests
07032PC	Positive Control Potato Virus A	1 vial (10 tests)
07032NC	Negative Control Potato Virus A	1 vial (10 tests)

- **Potato Aucuba Mosaic Potexvirus. (PAMV) (Potato G Virus, Potato Virus F, Tuber Blotch Virus)**

<b>Catalog No.</b>	<b>Designation</b>	<b>Size</b>
07165S/100	Potato Aucuba Mosaic Virus set / 100	100 tests
07165S/300	Potato Aucuba Mosaic Virus set / 300	300 tests
07165S/500	Potato Aucuba Mosaic Virus set / 500	500 tests
07165S/1000	Potato Aucuba Mosaic Virus set /1000	1000 tests
07165C/096	Potato Aucuba Mosaic Virus complete kit / 96	96 tests
07165C/480	Potato Aucuba Mosaic Virus complete kit / 480	480 tests
07165C/960	Potato Aucuba Mosaic Virus complete kit / 960	960 tests
07165PC	Positive Control Potato Aucuba Mosaic Virus	1 vial (10 tests)
07165NC	Negative Control Potato Aucuba Mosaic Virus	1 vial (10 tests)

**ELASA KITS**

- **Potato Black Ringspot Nepovirus. (PBRSV)**

Catalog No.	Designation	Size
07145S/100	Potato Black Ringspot Virus set / 100	100 tests
07145S/300	Potato Black Ringspot Virus set / 300	300 tests
07145S/500	Potato Black Ringspot Virus set / 500	500 tests
07145S/1000	Potato Black Ringspot Virus set / 1000	1000 tests
07145C/96	Potato Black Ringspot Virus complete kit / 96	96 tests
07145C/480	Potato Black Ringspot Virus complete kit / 480	480 tests
07145C/960	Potato Black Ringspot Virus complete kit / 960	960 tests
07145PC	Positive Control Potato Black Ringspot Virus inactivated	1 vial (10 tests)
07145NC	Negative Control Potato Black Ringspot Virus	1 vial (10 tests)

- **Potato Leafroll Pterovirus. (PLRV) (Potato Phloem Necrosis Virus)**

Catalog No.	Designation	Size
07031S/100	Potato Leafroll Virus set / 100	100 tests
07031S/500	Potato Leafroll Virus set / 500	500 tests
07031S/1000	Potato Leafroll Virus set / 1000	1000 tests
07031S/5000	Potato Leafroll Virus set / 5000	5000 tests
07031C/96	Potato Leafroll Virus complete kit / 96	96 tests
07031C/480	Potato Leafroll Virus complete kit / 480	480 tests
07031C/960	Potato Leafroll Virus complete kit / 960	960 tests
07031PC	Positive Control Potato Leafroll Virus	1 vial (10 tests)
07031NC	Negative Control Potato Leafroll Virus	1 vial (10 tests)

- **Potato M Carlavirus. (PVM) (Kartoffel-K Virus, Kartoffel Rollmosaik Virus, Potatovirus E)**

Catalog No.	Designation	Size
07033S/100	Potato Virus M set / 100	100 tests
07033S/500	Potato Virus M set / 500	500 tests
07033S/1000	Potato Virus M set / 1000	1000 tests
07033S/5000	Potato Virus M set / 5000	5000 tests
07033C/96	Potato Virus M complete kit / 96	96 tests
07033C/480	Potato Virus M complete kit / 480	480 tests
07033C/960	Potato Virus M complete kit / 960	960 tests
07033PC	Positive Control Potato Virus M	1 vial (10 tests)
07033NC	Negative Control Potato Virus M	1 vial (10 tests)



**ELASA KITS**

- **Potato S Carlavirus. (PVS) (Pepino Latent Virus)**

Catalog No.	Designation	Size
07034S/100	Potato Virus S set / 100	100 tests
07034S/500	Potato Virus S set / 500	500 tests
07034S/1000	Potato Virus S set / 1000	1000 tests
07034S/5000	Potato Virus S set / 5000	5000 tests
07034C/096	Potato Virus S complete kit / 96	96 tests
07034C/480	Potato Virus S complete kit / 480	480 tests
07034C/960	Potato Virus S complete kit / 960	960 tests
07034PC	Positive Control Potato Virus S	1 vial (10 tests)
07034NC	Negative Control Potato Virus S	1 vial (10 tests)

- **Potato X Potexvirus. (PVX) (Potato Latent Virus, Potato Mild Mosaic Virus)**

Catalog No.	Designation	Size
07037S/100	Potato Virus X set / 100	100 tests
07037S/500	Potato Virus X set / 500	500 tests
07037S/1000	Potato Virus X set / 1000	1000 tests
07037S/5000	Potato Virus X set / 5000	5000 tests
07037C/096	Potato Virus X complete kit / 96	96 tests
07037C/480	Potato Virus X complete kit / 480	480 tests
07037C/960	Potato Virus X complete kit / 960	960 tests
07037PC	Positive Control Potato Virus X	1 vial (10 tests)
07037NC	Negative Control Potato Virus X	1 vial (10 tests)

- **Potato Y Potyvirus. (PVY)**

Catalog No.	Designation	Size
07038S/100	Potato Virus Y set / 100	100 tests
07038S/500	Potato Virus Y set / 500	500 tests
07038S/1000	Potato Virus Y set / 1000	1000 tests
07038S/5000	Potato Virus Y set / 5000	5000 tests
07038C/096	Potato Virus Y complete kit / 96	96 tests
07038C/480	Potato Virus Y complete kit / 480	480 tests
07038C/960	Potato Virus Y complete kit / 960	960 tests
07038PC	Positive Control Potato Virus Y	1 vial (10 tests)
07038NC	Negative Control Potato Virus Y	1 vial (10 tests)

**ELASA KITS**

- **Prune Dwarf Ilarvirus. (PDV) (Cherry Chlorotic Ringspot Virus, Peach Stunt Virus, Sour Cherry Yellows Virus)**

Catalog No.	Designation	Size
07051S/100	Prune Dwarf Virus set / 100	100 tests
07051S/300	Prune Dwarf Virus set / 300	300 tests
07051S/500	Prune Dwarf Virus set / 500	500 tests
07051S/1000	Prune Dwarf Virus set / 1000	1000 tests
07051C/096	Prune Dwarf Virus complete kit / 96	96 tests
07051C/480	Prune Dwarf Virus complete kit / 480	480 tests
07051C/960	Prune Dwarf Virus complete kit / 960	960 tests
07051PC	Positive Control Prune Dwarf Virus	1 vial (10 tests)
07051NC	Negative Control Prune Dwarf Virus	1 vial (10 tests)

- **Prunus Necrotic Ringspot Ilarvirus. (PNRV)**

Catalog No.	Designation	Size
07052S/100	Prunus Necrotic Ringspot Virus set / 100	100 tests
07052S/300	Prunus Necrotic Ringspot Virus set / 300	300 tests
07052S/500	Prunus Necrotic Ringspot Virus set / 500	500 tests
07052S/1000	Prunus Necrotic Ringspot Virus set / 1000	1000 tests
07052C/096	Prunus Necrotic Ringspot Virus complete kit / 96	96 tests
07052C/480	Prunus Necrotic Ringspot Virus complete kit / 480	480 tests
07052C/960	Prunus Necrotic Ringspot Virus complete kit / 960	960 tests
07052PC	Positive Control Prunus Necrotic Ringspot Virus	1 vial (10 tests)
07052NC	Negative Control Prunus Necrotic Ringspot Virus	1 vial (10 tests)

- **Prunus Necrotic Ringspot Virus (PNRsV)**

Catalog No.	Designation	Size
K-19B	Prunus Necrotic Ringspot Virus set / 500	500 tests
K-19A	Prunus Necrotic Ringspot Virus set / 1000	1000 tests

- **Radish Mosaic Comovirus. (RaMV) (Radish Enation Mosaic Virus)**

Catalog No.	Designation	Size
07087S/100	Radish Mosaic Virus set / 100	100 tests
07087S/300	Radish Mosaic Virus set / 300	300 tests
07087S/500	Radish Mosaic Virus set / 500	500 tests
07087S/1000	Radish Mosaic Virus set / 1000	1000 tests
07087C/096	Radish Mosaic Virus complete kit / 96	96 tests
07087C/480	Radish Mosaic Virus complete kit / 480	480 tests
07087C/960	Radish Mosaic Virus complete kit / 960	960 tests
07087PC	Positive Control Radish Mosaic Virus	1 vial (10 tests)
07087NC	Negative Control Radish Mosaic Virus	1 vial (10 tests)

**ELASA KITS**

- **Raspberry Bushy Dwarf Idaeovirus. (RBDV) (Logan Berry Degeneration Virus, Raspberry Line Pattern Virus)**

Catalog No.	Designation	Size
07080S/100	Raspberry Bushy Dwarf Virus set / 100	100 tests
07080S/300	Raspberry Bushy Dwarf Virus set / 300	300 tests
07080S/500	Raspberry Bushy Dwarf Virus set / 500	500 tests
07080S/1000	Raspberry Bushy Dwarf Virus set / 1000	1000 tests
07080C/096	Raspberry Bushy Dwarf Virus complete kit / 96	96 tests
07080C/480	Raspberry Bushy Dwarf Virus complete kit / 480	480 tests
07080C/960	Raspberry Bushy Dwarf Virus complete kit / 960	960 tests
07080PC	Positive Control Raspberry Bushy Dwarf Virus	1 vial (10 tests)
07080NC	Negative Control Raspberry Bushy Dwarf Virus	1 vial (10 tests)

- **Raspberry Ringspot Nepovirus BroadRange. (RpRSV) (Raspberry Scottish Leaf Curl Virus, Red Currant Ringspot Virus)**

Catalog No.	Designation	Size
07141S/100	Raspberry Ringspot Virus Broad Range set / 100	100 tests
07141S/300	Raspberry Ringspot Virus Broad Range set / 300	300 tests
07141S/500	Raspberry Ringspot Virus Broad Range set / 500	500 tests
07141S/1000	Raspberry Ringspot Virus Broad Range set / 1000	1000 tests
07141C/096	Raspberry Ringspot Virus Broad Range complete kit / 96	96 tests
07141C/480	Raspberry Ringspot Virus Broad Range complete kit / 480	480 tests
07141C/960	Raspberry Ringspot Virus Broad Range complete kit /960	960 tests
07144PC	Raspberry Ringspot Virus grapevine isolate inactivated	1 vial (10 tests)
07141NC	Negative Control Raspberry Ringspot Virus Broad Range	1 vial (10 tests)

- **Raspberry Ringspot Nepovirus cherry isolate. (RpRSV ch) (Pfeffinger Disease)**

Catalog No.	Designation	Size
07142S/100	Raspberry Ringspot Virus cherry isolate set / 100	100 tests
07142S/300	Raspberry Ringspot Virus cherry isolate set / 300	300 tests
07142S/500	Raspberry Ringspot Virus cherry isolate set / 500	500 tests
07142C/096	Raspberry Ringspot Virus cherry isolate complete kit / 96	96 tests
07142C/480	Raspberry Ringspot Virus cherry isolate complete kit / 480	480 tests
07142PC	Positive Control Raspberry Ringspot Virus cherry inactivated	1 vial (10 tests)
07210PC	Positive Control Quarantine GAR unspecific	1 vial (10 tests)
07142NC	Negative Control Raspberry Ringspot Virus cherry isolate	1 vial (10 tests)

**ELASA KITS**

- **Raspberry Ringspot Nepovirus grapevine isolate. (RpRSV g)**

Catalog No.	Designation	Size
07144S/100	Raspberry Ringspot Virus grapevine isolate set / 100	100 tests
07144S/300	Raspberry Ringspot Virus grapevine isolate set / 300	300 tests
07144S/500	Raspberry Ringspot Virus grapevine isolate set / 500	100 tests
07144C/096	Raspberry Ringspot Virus grapevine isolate complete kit / 96	96 tests
07144C/480	Raspberry Ringspot Virus grapevine isolate complete kit / 480	480 tests
07144PC	Positive Control Raspberry Ringspot Virus grapevine isolate inactivated	1 vial (10 tests)
07144NC	Negative Control Raspberry Ringspot Virus grapevine isolate	1 vial (10 tests)

- **Raspberry Ringspot Nepovirus raspberry isolate. (RpRSV r)**

Catalog No.	Designation	Size
07143S/100	Raspberry Ringspot Virus raspberry isolate set / 100	100 tests
07143S/300	Raspberry Ringspot Virus raspberry isolate set / 300	300 tests
07143S/500	Raspberry Ringspot Virus raspberry isolate set / 500	500 tests
07143C/096	Raspberry Ringspot Virus raspberry isolate complete kit / 96	96 tests
07143C/480	Raspberry Ringspot Virus raspberry isolate complete kit / 480	480 tests
07143PC	Positive Control Raspberry Ringspot Virus raspberry isolate inactivated	1 vial (10 tests)
07143NC	Negative Control Raspberry Ringspot Virus raspberry isolate	1 vial (10 tests)

- **Red Clover Mottle Comovirus. (RCMV) (Clover Red Mottle Virus)**

Catalog No.	Designation	Size
07040S/100	Red Clover Mottle Virus set / 100	100 tests
07040S/300	Red Clover Mottle Virus set / 300	300 test
07040S/500	Red Clover Mottle Virus set / 500	500 tests
07040S/1000	Red Clover Mottle Virus set / 1000	1000 tests
07040C/096	Red Clover Mottle Virus complete kit / 96	96 tests
07040C/480	Red Clover Mottle Virus complete kit / 480	480 tests
07040C/960	Red Clover Mottle Virus complete kit / 960	960 tests
07040PC	Positive Control Red Clover Mottle Virus	1 vial (10 tests)
07040NC	Negative Control Red Clover Mottle Virus	1 vial (10 tests)

**ELISA KITS**

- **Rice Yellow Mottle Sobemovirus. (RYMV)**

Catalog No.	Designation	Size
07133S/100	Rice Yellow Mottle Virus set / 100	100 tests
07133S/300	Rice Yellow Mottle Virus set / 300	300 tests
07133S/500	Rice Yellow Mottle Virus set / 500	500 tests
07133C/096	Rice Yellow Mottle Virus complete kit / 96	96 tests
07133C/480	Rice Yellow Mottle Virus complete kit / 480	480 tests
07133PC	Positive Control Rice Yellow Mottle Virus	1 vial (10 tests)
07133NC	Negative Control Rice Yellow Mottle Virus	1 vial (10 tests)

- **Set Citrus CERT (CTV + CPsV + controls)**

Catalog No.	Designation	Size
S-03A	Set Citrus CERT set / 1000 x 2	1000 x 2 tests

- **Set Grapevine CERT 4 Elisa (ArMV, GFLV, GLRaV-1, GLRaV-3 + controls)**

Catalog No.	Designation	Size
S-04B	Set Grapevine CERT 4 set / 500 x 4	500 x 4 tests
S-04A	Set Grapevine CERT 4 set / 1000 x 4	1000 x 4 tests

- **Set Grapevine CERT 5 Elisa (ArMV, GFLV, GFKV, GLRaV-1, GLRaV-3 + controls)**

Catalog No.	Designation	Size
S-05B	Set Grapevine CERT 5 set / 500 x 5	500 x 5 tests
S-05A	Set Grapevine CERT 5 set / 1000 x 5	1000 x 5 tests

- **Set Grapevine CS 5 Elisa (GFLV, GFKV , GLRaV-1, GLRaV-3, GVA)**

Catalog No.	Designation	Size
S-01B	Set Grapevine CS 5 set / 500 x 5	500 x 5 tests
S-01A	Set Grapevine CS 5 set / 1000 x 5	1000 x 5 tests

- **Set Sharka**

Catalog No.	Designation	Size
S-02	Set Sharka set / 1000 + 500	1+00 x 500 tests

- **Soil-borne Cereal Mosaic Furovirus. (SbCMV) (Soil-borne Rye Mosaic Virus)**

Catalog No.	Designation	Size
07173S/100	Soil-borne Cereal Mosaic Virus set / 100	100 tests
07173S/300	Soil-borne Cereal Mosaic Virus set / 300	300 tests
07173S/500	Soil-borne Cereal Mosaic Virus set / 500	500 tests
07173C/096	Soil-borne Cereal Mosaic Virus complete kit / 96	96 tests
07173C/480	Soil-borne Cereal Mosaic Virus complete kit / 480	480 tests
07173PC	Positive Control Soil-borne Cereal Mosaic Virus	1 vial (10 tests)
07173NC	Negative Control Soil-borne Cereal Mosaic Virus	1 vial (10 tests)

**ELASA KITS**

- **Soil-borne Wheat Mosaic Furovirus. (SbWMV)**

Catalog No.	Designation	Size
07174S/100	Soil-borne Wheat Mosaic Virus set / 100	100 tests
07174S/300	Soil-borne Wheat Mosaic Virus set / 300	300 tests
07174S/500	Soil-borne Wheat Mosaic Virus set / 500	500 tests
07174C/096	Soil-borne Wheat Mosaic Virus complete kit / 96	96 tests
07174C/480	Soil-borne Wheat Mosaic Virus complete kit / 480	480 tests
07174PC	Positive Control Soil-borne Wheat Mosaic Virus / 960	1 vial (10 tests)
07174NC	Negative Control Soil-borne Wheat Mosaic Virus	1 vial (10 tests)

- **Sorghum Mosaic Potyvirus. (SrMV) (Sugarcane mosaic virus strains H and I)**

Catalog No.	Designation	Size
07106S/100	Sorghum Mosaic Virus set / 100	100 tests
07106S/300	Sorghum Mosaic Virus set / 300	300 tests
07106S/500	Sorghum Mosaic Virus set / 500	500 tests
07106S/1000	Sorghum Mosaic Virus set / 1000	1000 tests
07106C/096	Sorghum Mosaic Virus complete kit / 96	96 tests
07106C/480	Sorghum Mosaic Virus complete kit / 480	480 tests
07106C/960	Sorghum Mosaic Virus complete kit / 960	960 tests
07106PC	Positive Control Sorghum Mosaic Virus	1 vial (10 tests)
07106NC	Negative Control Sorghum Mosaic Virus	1 vial (10 tests)

- **Southern Bean Mosaic Sobemovirus. (SBMV)**

Catalog No.	Designation	Size
07179S/100	Southern Bean Mosaic Virus / 100	100 tests
07179S/300	Southern Bean Mosaic Virus /300	300 tests
07179S/500	Southern Bean Mosaic Virus / 500	500 tests
07179C/096	Southern Bean Mosaic Virus complete kit /96	96 tests
07179C/480	Southern Bean Mosaic Virus complete kit /480	480 tests
07179PC	Positive Control Southern Bean Mosaic Virus	1 vial (10 tests)
07179NC	Negative Control Southern Bean Mosaic Virus	1 vial (10 tests)

- **Soybean Mosaic Potyvirus. (SMV)**

Catalog No.	Designation	Size
07074S/100	Soybean Mosaic Virus set / 100	100 tests
07074S/300	Soybean Mosaic Virus set / 300	300 test
07074S/500	Soybean Mosaic Virus set / 500	500 tests
07074C/096	Soybean Mosaic Virus complete kit / 96	96 tests
07074C/480	Soybean Mosaic Virus complete kit / 480	480 tests
07074PC	Positive Control Soybean Mosaic Virus	1 vial (10 tests)
07074NC	Negative Control Soybean Mosaic Virus	1 vial (10 tests)

**ELASA KITS**

- **Squash Mosaic Comovirus. (SqMV) (Cucurbit Ring Mosaic Virus, Muskmelon Mosaic Virus, Pumpkin Mosaic Virus)**

Catalog No.	Designation	Size
07089S/100	Squash Mosaic Virus set / 100	100 tests
07089S/300	Squash Mosaic Virus set / 300	300 tests
07089S/500	Squash Mosaic Virus set / 500	500 tests
07089C/096	Squash Mosaic Virus complete kit / 96	96 tests
07089C/480	Squash Mosaic Virus complete kit / 480	480 tests
07089PC	Positive Control Squash Mosaic Virus	1 vial (10 tests)
07089NC	Negative Control Squash Mosaic Virus	1 vial (10 tests)

- **Strawberry Latent Ringspot Nepovirus. (SLRV) (Aesculus Line Pattern Virus, Rhubarb Virus 5)**

Catalog No.	Designation	Size
07115S/100	Strawberry Latent Ringspot Virus set / 100	100 tests
07115S/300	Strawberry Latent Ringspot Virus set / 300	300 tests
07115S/500	Strawberry Latent Ringspot Virus set / 500	500 tests
07115S/1000	Strawberry Latent Ringspot Virus set / 1000	1000 tests
07115C/096	Strawberry Latent Ringspot Virus complete kit / 96	96 tests
07115C/480	Strawberry Latent Ringspot Virus complete kit / 480	480 tests
07115C/960	Strawberry Latent Ringspot Virus complete kit / 960	960 tests
07115PC	Positive Control Strawberry Latent Ringspot Virus inactivated	1 vial (10 tests)
07115NC	Negative Control Strawberry Latent Ringspot Virus	1 vial (10 tests)

- **Sugarcane Mosaic Potyvirus. (SCMV. MDMV B) (Sugarcane Mosaic Virus.SCMV. MDMV B)**

Catalog No.	Designation	Size
07088S/100	Sugarcane Mosaic Virus set / 100	100 tests
07088S/500	Sugarcane Mosaic Virus set / 300	300 tests
07088S/500	Sugarcane Mosaic Virus set / 500	500 tests
07086S/1000	Sugarcane Mosaic Virus set / 1000	1000 tests
07088C/096	Sugarcane Mosaic Virus complete kit / 96	96 tests
07088C/480	Sugarcane Mosaic Virus complete kit / 480	480 tests
07088C/960	Sugarcane Mosaic Virus complete kit / 960	960 tests
07088PC	Positive Control Sugarcane Mosaic Virus	1 vial (10 tests)
07088NC	Negative Control Sugarcane Mosaic Virus	1 vial (10 tests)

**ELASA KITS**

- **Tobacco Mild Green Mosaic Tobamovirus. (TMGMV)**

Catalog No.	Designation	Size
07176S/100	Tobacco Mild Green Mosaic Virus set / 100	100 tests
07176S/300	Tobacco Mild Green Mosaic Virus set / 300	300 tests
07176S/500	Tobacco Mild Green Mosaic Virus set / 500	500 tests
07176S/1000	Tobacco Mild Green Mosaic Virus set / 1000	1000 tests
07176C/096	Tobacco Mild Green Mosaic Virus complete kit / 96	96 tests
07176C/480	Tobacco Mild Green Mosaic Virus complete kit / 480	480 tests
07176/960	Tobacco Mild Green Mosaic Virus complete kit / 960	960 tests
07176PC	Positive Control Tobacco Mild Green Mosaic Virus	1 vial (10 tests)
07176NC	Negative Control Tobacco Mild Green Mosaic Virus	1 vial (10 tests)

- **Tobacco Mosaic Tobamovirus. (TMV) (Tobacco Mosaic Virus U1, Tobacco Mosaic Virus common strain)**

Catalog No.	Designation	Size
07042S/100	Tobacco Mosaic Virus set / 100	100 tests
07042S/300	Tobacco Mosaic Virus set / 300	300 tests
07042S/500	Tobacco Mosaic Virus set / 500	500 tests
07042S/1000	Tobacco Mosaic Virus set / 1000	1000 tests
07042S/5000	Tobacco Mosaic Virus set / 5000	5000 tests
07042C/096	Tobacco Mosaic Virus complete kit / 96	96 tests
07042C/480	Tobacco Mosaic Virus complete kit / 480	480 tests
07042C/960	Tobacco Mosaic Virus complete kit / 960	960 tests
07042PC	Positive Control Tobacco Mosaic Virus	1 vial (10 tests)
07042NC	Negative Control Tobacco Mosaic Virus	1 vial (10 tests)

- **Tobacco Necrosis Necrovirus A type. (TNV A) (Tomato isolate)**

Catalog No.	Designation	Size
07046S/100	Tobacco Necrosis Virus A set / 100	100 tests
07046S/300	Tobacco Necrosis Virus A set / 300	300 tests
07046S/500	Tobacco Necrosis Virus A set / 500	500 tests
07046C/096	Tobacco Necrosis Virus A complete kit / 96	96 tests
07046C/480	Tobacco Necrosis Virus A complete kit / 480	480 tests
07046PC	Positive Control Tobacco Necrosis Virus A	1 vial (10 tests)
07046NC	Negative Control Tobacco Necrosis Virus A	1 vial (10 tests)



**ELASA KITS**

- **Tobacco Necrosis Necrovirus BroadRange. (TNV)**

Catalog No.	Designation	Size
07036S/100	Tobacco Necrosis Virus Broad Range set / 100	100 tests
07036S/300	Tobacco Necrosis Virus Broad Range set / 300	300 tests
07036S/500	Tobacco Necrosis Virus Broad Range set / 500	500 tests
07036S/1000	Tobacco Necrosis Virus Broad Range set / 1000	1000 tests
07036C/096	Tobacco Necrosis Virus Broad Range complete kit / 96	96 tests
07036C/480	Tobacco Necrosis Virus Broad Range complete kit / 480	480 tests
07036C/960	Tobacco Necrosis Virus Broad Range complete kit / 960	960 tests
07046PC	Positive Control Tobacco Necrosis Virus A	1 vial (10 tests)
07036NC	Negative Control Tobacco Necrosis Virus Broad Range	1 vial (10 tests)

- **Tobacco Necrosis Necrovirus cherry isolate. (TNV ch)**

Catalog No.	Designation	Size
07035S/100	Tobacco Necrosis Virus cherry set / 100	100 tests
07035S/300	Tobacco Necrosis Virus cherry set / 300	300 tests
07035S/500	Tobacco Necrosis Virus cherry set / 500	500 tests
07035C/096	Tobacco Necrosis Virus cherry complete kit / 96	96 tests
07035C/480	Tobacco Necrosis Virus cherry complete kit / 480	480 tests
07035PC	Positive Control Tobacco Necrosis Virus cherry	1 vial (10 tests)
07035NC	Negative Control Tobacco Necrosis Virus cherry	1 vial (10 tests)

- **Tobacco Necrosis Necrovirus E. (TNV E)**

Catalog No.	Designation	Size
07043S/100	Tobacco Necrosis Virus E set / 100	100 tests
07043S/300	Tobacco Necrosis Virus E set / 300	300 tests
07043S/500	Tobacco Necrosis Virus E set / 500	500 tests
07043C/096	Tobacco Necrosis Virus E complete kit / 96	96 tests
07043C/480	Tobacco Necrosis Virus E complete kit / 480	480 tests
07043PC	Positive Control Tobacco Necrosis Virus E	1 vial (10 tests)
07043NC	Negative Control Tobacco Necrosis Virus E	1 vial (10 tests)

- **Tobacco Rattle Tobravirus BroadRange.(TRV)**

Catalog No.	Designation	Size
07152S/100	Tobacco Rattle V. BroadRange set / 100	100 tests
07152S/300	Tobacco Rattle V. BroadRange set / 300	300 tests
07152S/500	Tobacco Rattle V. BroadRange set / 500	500 tests
07152S/1000	Tobacco Rattle V. BroadRange set / 1000	1000 tests
07152C/096	Tobacco Rattle Virus BroadRange complete kit / 96	96 tests
07152C/480	Tobacco Rattle Virus BroadRange complete kit / 480	480 tests
07152C/960	Tobacco Rattle Virus BroadRange complete kit / 960	960 tests
07044PC	Positive Control Tobacco Rattle Virus K	1 vial (10 tests)
07152NC	Negative Control Tobacco Rattle Virus	1 vial (10 tests)

**ELASA KITS**

- **Tobacco Rattle Tobravirus Jeffersonia isolate. (TRV J)**

<b>Catalog No.</b>	<b>Designation</b>	<b>Size</b>
07116S/100	Tobacco Rattle Virus J set / 100	100 tests
07116S/300	Tobacco Rattle Virus J set / 300	300 tests
07116S/500	Tobacco Rattle Virus J set / 500	500 tests
07116C/096	Tobacco Rattle Virus J complete kit / 96	96 tests
07116C/480	Tobacco Rattle Virus J complete kit / 480	480 tests
07116PC	Positive Control Tobacco Rattle Virus J	1 vial (10 tests)
07116NC	Negative Control Tobacco Rattle Virus J	1 vial (10 tests)

- **Tobacco Rattle Tobravirus K potato isolate. (TRV K)**

<b>Catalog No.</b>	<b>Designation</b>	<b>Size</b>
07044S/100	Tobacco Rattle Virus K set / 100	100 tests
07044S/300	Tobacco Rattle Virus K set / 300	300 tests
07044S/500	Tobacco Rattle Virus K set / 500	500 tests
07044C/096	Tobacco Rattle Virus K complete kit / 96	96 tests
07044C/480	Tobacco Rattle Virus K complete kit / 480	480 tests
07044PC	Positive Control Tobacco Rattle Virus K	1 vial (10 tests)
07044NC	Negative Control Tobacco Rattle Virus K	1 vial (10 tests)

- **Tobacco Rattle Tobravirus Mirow potato isolate. (TRV M)**

<b>Catalog No.</b>	<b>Designation</b>	<b>Size</b>
07113S/100	Tobacco Rattle Virus M set / 100	100 tests
07113S/300	Tobacco Rattle Virus M set / 300	300 tests
07113S/500	Tobacco Rattle Virus M set / 500	500 tests
07113C/096	Tobacco Rattle Virus M complete kit / 96	96 tests
07113C/480	Tobacco Rattle Virus M complete kit / 480	480 tests
07113PC	Positive Control Tobacco Rattle Virus M	1 vial (10 tests)
07113NC	Negative Control Tobacco Rattle Virus M	1 vial (10 tests)

- **Tobacco Ringspot Nepovirus. (TRSV)**

<b>Catalog No.</b>	<b>Designation</b>	<b>Size</b>
07168S/100	Tobacco Ringspot Virus set / 100	100 tests
07168S/300	Tobacco Ringspot Virus set / 300	300 tests
07168S/500	Tobacco Ringspot Virus set / 500	500 tests
07168S/1000	Tobacco Ringspot Virus set / 1000	1000 tests
07168C/096	Tobacco Ringspot Virus complete kit / 96	96 tests
07168C/480	Tobacco Ringspot Virus complete kit / 480	480 tests
07168C/960	Tobacco Ringspot Virus complete kit / 960	960 tests
07210PC	Positive Control Quarantine GAR unspecific	1 vial (10 tests)
07168NC	Negative Control Tobacco Ringspot Virus	1 vial (10 tests)

**ELASA KITS**

- **Tobamoscreen® I detects PMMoV, TMV, ToMV (Tobamoviruses)**

Catalog No.	Designation	Size
07184S/100	Tobamoscreen ® I set / 100	100 tests
07184S/300	Tobamoscreen ® I set / 300	300 tests
07184S/500	Tobamoscreen ® I set / 500	500 tests
07184S/1000	Tobamoscreen ® I set / 1000	1000 tests
07184S/5000	Tobamoscreen ® I set / 5000	5000 tests
07184C/096	Tobamoscreen ® I complete kit / 96	96 tests
07184C/480	Tobamoscreen ® I complete kit / 480	480 tests
07184C/960	Tobamoscreen ® I complete kit / 960	960 tests
07095PC	Positive Control PMMoV	1 vial (10 tests)
07042PC	Positive Control TMV	1 vial (10 tests)
07047PC	Positive Control ToMV	1 vial (10 tests)
07184NC	Negative Control Tobamoscreen ® I	1 vial (10 tests)

- **Tomato Aspermy Cucumovirus. (TAV) (Chrysanthemum Mild Mottle Virus, Chrysanthemum Aspermy Virus, Chrysanthemum Mosaic Virus)**

Catalog No.	Designation	Size
07045S/100	Tomato Aspermy Virus set / 100	100 tests
07045S/300	Tomato Aspermy Virus set / 300	300 tests
07045S/500	Tomato Aspermy Virus set / 500	500 tests
07045C/096	Tomato Aspermy Virus complete kit / 96	96 tests
07045C/480	Tomato Aspermy Virus complete kit / 480	480 tests
07045PC	Positive Control Tomato Aspermy Virus	1 vial (10 tests)
07045NC	Negative Control Tomato Aspermy Virus	1 vial (10 tests)

- **Tomato Blackring Nepovirus. (TBRV)**

Catalog No.	Designation	Size
07062S/100	Tomato Blackring Virus set / 100	100 tests
07062S/300	Tomato Blackring Virus set / 300	300 tests
07062S/500	Tomato Blackring Virus set / 500	500 tests
07062C/096	Tomato Blackring Virus complete kit / 96	96 tests
07062C/480	Tomato Blackring Virus complete kit / 480	480 tests
07062PC	Positive Control Tomato Blackring Virus inactivated	1 vial (10 tests)
07062NC	Negative Control Tomato Blackring Virus	1 vial (10 tests)

**ELISA KITS**

- **Tomato Brown Rugose Fruit Virus (ToBRFV)**

Catalog No.	Designation	Size
07175S/100	Tomato Brown Rugose Fruit Virus set / 100	100 tests
07175S/300	Tomato Brown Rugose Fruit Virus set / 300	300 tests
07175S/500	Tomato Brown Rugose Fruit Virus set / 500	500 tests
07175C/096	Tomato Brown Rugose Fruit Virus complete kit / 96	96 tests
07175C/480	Tomato Brown Rugose Fruit Virus complete kit / 480	480 tests
07210PC	ELISA Method Control GAR unspecific	1 vial (10 tests) for ToBRFV
07175NC	Negative Control ToBRFV	1 vial (10 tests)

- **Tomato Bushy Stunt Tombusvirus. (TBSV)**

Catalog No.	Designation	Size
07067S/100	Tomato Bushy Stunt Virus set / 100	100 tests
07067S/300	Tomato Bushy Stunt Virus set / 300	300 tests
07067S/500	Tomato Bushy Stunt Virus set / 500	500 tests
07067/1000	Tomato Bushy Stunt Virus set / 1000	1000 tests
07067/5000	Tomato Bushy Stunt Virus set / 5000	5000 tests
07067C/096	Tomato Bushy Stunt Virus complete kit / 96	96 tests
07067C/480	Tomato Bushy Stunt Virus complete kit / 480	480 tests
07067C/960	Tomato Bushy Stunt Virus complete kit / 960	960 tests
07067PC	Positive Control Tomato Bushy Stunt Virus	1 vial (10 tests)
07067NC	Negative Control Tomato Bushy Stunt Virus	1 vial (10 tests)

- **Tomato Chlorosis Crinivirus. (ToCV)**

Catalog No.	Designation	Size
07101S/100	Tomato Chlorosis Virus set / 100	100 tests
07101S/300	Tomato Chlorosis Virus set / 300	300 tests
07101S/500	Tomato Chlorosis Virus set / 500	500 tests
07101C/96	Tomato Chlorosis Virus complete kit / 96	96 tests
07101C/480	Tomato Chlorosis Virus complete kit / 480	480 tests
07101PC	Positive Control Tomato Chlorosis Virus	1 vial (10 tests)
07101NC	Negative Control Tomato Chlorosis Virus	1 vial (10 tests)

**ELASA KITS**

- **Tomato Chlorotic Spot Tospovirus. (TCSV) (Tomato Chlorotic Spot Virus BR03, Tospovirus former serogroup II)**

Catalog No.	Designation	Size
07503S/100	Tomato Chlorotic Spot Virus set / 100	100 tests
07503S/300	Tomato Chlorotic Spot Virus set / 300	300 tests
07503S/500	Tomato Chlorotic Spot Virus set / 500	500 tests
07503S/1000	Tomato Chlorotic Spot Virus set / 1000	1000 tests
07503C/096	Tomato Chlorotic Spot Virus complete kit / 96	96 tests
07503C/480	Tomato Chlorotic Spot Virus complete kit / 480	480 tests
07503C/960	Tomato Chlorotic Spot Virus complete kit / 960	960 tests
07503PC	Positive Control Tomato Chlorotic Spot Virus	1 vial (10 tests)
07503NC	Negative Control Tomato Chlorotic Spot Virus	1 vial (10 tests)

- **Tomato Mosaic Tobamovirus Dahlemense. (ToMV)**

Catalog No.	Designation	Size
07047S/100	Tomato Mosaic Virus set / 100	100 tests
07047S/300	Tomato Mosaic Virus set / 300	300 tests
07047S/500	Tomato Mosaic Virus set / 500	500 tests
07047S/1000	Tomato Mosaic Virus set / 1000	1000 tests
07047S/5000	Tomato Mosaic Virus set / 5000	5000 tests
07047C/096	Tomato Mosaic Virus complete kit / 96	96 tests
07047C/480	Tomato Mosaic Virus complete kit / 480	480 tests
07047C/960	Tomato Mosaic Virus complete kit / 960	960 tests
07047PC	Positive Control Tomato Mosaic Virus	1 vial (10 tests)
07047NC	Negative Control Tomato Mosaic Virus	1 vial (10 tests)

- **Tomato Ringspot Nepovirus pelargonium isolate. (ToRSV) (Anemone Necrosis Virus, Blueberry Necrotic Ringspot Virus)**

Catalog No.	Designation	Size
07084S/100	Tomato Ringspot Virus set / 100	100 tests
07084S/300	Tomato Ringspot Virus set / 300	300 tests
07084S/500	Tomato Ringspot Virus set / 500	500 tests
07084C/096	Tomato Ringspot Virus complete kit /96	96 tests
07084C/480	Tomato Ringspot Virus complete kit / 480	480 tests
07084PC	Positive Control Tomato Ringspot Virus inactivated	1 vial (10 tests)
07084NC	Negative Control Tomato Ringspot Virus	1 vial (10 tests)

**ELASA KITS**

- **Tomato Spotted Wilt Virus Tospovirus. (TSWV)**

Catalog No.	Designation	Size
07501S/100	Tomato Spotted Wilt Virus set / 100	100 tests
07501S/300	Tomato Spotted Wilt Virus set / 300	300 tests
07501S/500	Tomato Spotted Wilt Virus set / 500	500 tests
07501S/1000	Tomato Spotted Wilt Virus set / 1000	1000 tests
07501C/096	Tomato Spotted Wilt Virus complete kit / 96	96 tests
07501C/480	Tomato Spotted Wilt Virus complete kit / 480	480 tests
07501C/960	Tomato Spotted Wilt Virus complete kit / 960	960 tests
07501PC	Positive Control Tomato Spotted Wilt Virus inactivated	1 vial (10 tests)
07501NC	Negative Control Tomato Spotted Wilt Virus	1 vial (10 tests)

- **Tomato Spotted Wilt Virus/Impatiens Necrotic Spot Virus. (TSWV/INSV) (Tospoviruses)**

Catalog No.	Designation	Size
07506S/100	TSWV/INSV set / 100	100 tests
07506S/300	TSWV/INSV set / 300	300 tests
07506S/500	TSWV/INSV set / 500	500 tests
07506S/1000	TSWV/INSV set / 1000	1000 tests
07506C/096	TSWV/INSV complete kit / 96	96 tests
07506C/480	TSWV/INSV complete kit / 480	480 tests
07506C/960	TSWV/INSV complete kit / 960	960 tests
07501PC	Positive Control Tomato Spotted Wilt Virus inactivated	1 vial (10 tests)
07505PC	Positive Control Impatiens Necrotic Spot Virus	1 vial (10 tests)
07506NC	Negative Control TSWV/INSV	1 vial (10 tests)

- **Tomato Yellow Leaf Curl Bigeminivirus. (TYLCV) (detects TYLCV + TYLCSV and other Bigeminiviruses)**

Catalog No.	Designation	Size
07177S/100	Tomato Yellow Leafcurl Virus TAS ELISA set / 100	100 tests
07177S/300	Tomato Yellow Leafcurl Virus TAS ELISA set / 300	300 tests
07177S/500	Tomato Yellow Leafcurl Virus TAS ELISA set / 500	500 tests
07177C/096	Tomato Yellow Leafcurl Virus TAS ELISA complete kit / 96	96 tests
07177C/480	Tomato Yellow Leafcurl Virus TAS ELISA complete kit / 480	480 tests
07212PC	unspecific Quarantine Control for Tomato Yellow Leafcurl Virus	1 vial (10 tests)
07177NC	Negative Control Tomato Yellow Leafcurl Virus	1 vial (10 tests)

**ELASA KITS**

- **TospoSCREEN detects TSWV, TCSV, INSV, GRSV, CSNV (Tospoviruses)**

<b>Catalog No.</b>	<b>Designation</b>	<b>Size</b>
07510S/100	TospoSCREEN set / 100	100 tests
07510S/300	TospoSCREEN set / 300	300 tests
07510S/500	TospoSCREEN set / 500	500 tests
07510S/1000	TospoSCREEN set / 1000	1000 tests
07510S/5000	TospoSCREEN set / 5000	5000 tests
07510C/096	TospoSCREEN complete kit / 96	96 tests
07510C/480	TospoSCREEN complete kit / 480	480 tests
07510C/960	TospoSCREEN complete kit / 960	960 tests
07501PC	Positive Control Tomato Spotted Wilt Virus inactivated	1 vial (10 tests)
07505PC	Positive Control Impatiens Necrotic Spot Virus	1 vial (10 tests)
07503PC	Positive Control Tomato Chlorotic Spot Virus	1 vial (10 tests)
07504PC	Positive Control Groundnut Ringspot Virus	1 vial (10 tests)
07510NC	Negative Control TospoSCREEN	1 vial (10 tests)

- **Turnip Mosaic Potyvirus. (TuMV)**

<b>Catalog No.</b>	<b>Designation</b>	<b>Size</b>
07049S/100	Turnip Mosaic Virus set / 100	100 tests
07049S/300	Turnip Mosaic Virus set / 300	300 tests
07049S/500	Turnip Mosaic Virus set / 500	500 tests
07049C/096	Turnip Mosaic Virus complete kit / 96	96 tests
07049C/480	Turnip Mosaic Virus complete kit / 480	480 tests
07049PC	Positive Control Turnip Mosaic Virus	1 vial (10 tests)
07049NC	Negative Control Turnip Mosaic Virus	1 vial (10 tests)

- **Turnip Yellow Mosaic Tymovirus. (TYMV) (Cardamine Yellow Mosaic Virus)**

<b>Catalog No.</b>	<b>Designation</b>	<b>Size</b>
07091S/100	Turnip Yellow Mosaic Virus set / 100	100 tests
07091S/300	Turnip Yellow Mosaic Virus set / 300	300 tests
07091S/500	Turnip Yellow Mosaic Virus set / 500	500 tests
07091C/480	Turnip Yellow Mosaic Virus complete kit / 480	96 tests
07091C/96	Turnip Yellow Mosaic Virus complete kit / 96	480 tests
07091PC	Positive Control Turnip Yellow Mosaic Virus	1 vial (10 tests)
07091NC	Negative Control Turnip Yellow Mosaic Virus	1 vial (10 tests)

**ELASA KITS**

- **Turnip Yellows Polerovirus. TuYV (Beet Mild Yellowing Virus rape isolate, Beet Western Yellows Virus)**

Catalog No.	Designation	Size
07009S/100	Turnip Yellows Virus (Beet Mild Yellowing Virus) set / 100	100 tests
07009S/300	Turnip Yellows Virus (Beet Mild Yellowing Virus) set / 300	300 tests
07009S/500	Turnip Yellows Virus (Beet Mild Yellowing Virus) set / 500	500 tests
07009C/096	Turnip Yellows Virus (Beet Mild Yellowing Virus) complete kit / 96	96 tests
07009C/480	Turnip Yellows Virus (Beet Mild Yellowing Virus) complete kit / 480	480 tests
07009PC	Positive Control Turnip Yellows Virus (Beet Mild Yellowing Virus)	1 vial (10 tests)
07009NC	Negative Control Turnip Yellows Virus (Beet Mild Yellowing Virus)	1 vial (10 tests)

- **Watermelon Mosaic II Potyvirus. (WMV II) (Marrow Mosaic Virus, Melon Mosaic Virus)**

Catalog No.	Designation	Size
07095S/100	Watermelon Virus II set / 100	100 tests
07095S/300	Watermelon Virus II set / 300	300 tests
07095S/500	Watermelon Virus II set / 500	500 tests
07095C/096	Watermelon Virus II complete kit / 96	96 tests
07095C/480	Watermelon Virus II complete kit / 480	480 tests
07095PC	Positive Control Watermelon Virus II	1 vial (10 tests)
07095NC	Negative Control Watermelon Virus II	1 vial (10 tests)

- **Wheat Dwarf Monogeminivirus. (WDV)**

Catalog No.	Designation	Size
07082S/100	Wheat Dwarf Virus set / 100	100 tests
07082S/300	Wheat Dwarf Virus set / 300	300 tests
07082S/500	Wheat Dwarf Virus set / 500	500 tests
07082S/1000	Wheat Dwarf Virus set / 1000	1000 tests
07082C/096	Wheat Dwarf Virus complete kit / 96	96 tests
07082C/480	Wheat Dwarf Virus complete kit / 480	480 tests
07082C/960	Wheat Dwarf Virus complete kit / 960	960 tests
07082PC	Positive Control Wheat Dwarf Virus	1 vial (10 tests)
07082NC	Negative Control Wheat Dwarf Virus	1 vial (10 tests)

- **Wheat Spindle Streak Mosaic Bymovirus. (WSSMV)**

Catalog No.	Designation	Size
07171S/100	Wheat Spindle Streak Mosaic Virus set / 100	100 tests
07171S/300	Wheat Spindle Streak Mosaic Virus set / 300	300 tests
07171S/500	Wheat Spindle Streak Mosaic Virus set / 500	500 tests
07171C/096	Wheat Spindle Streak Mosaic Virus complete kit / 96	96 tests
07171C/480	Wheat Spindle Streak Mosaic Virus complete kit / 480	480 tests
07171PC	Positive Control Wheat Spindle Streak Mosaic V.	1 vial (10 tests)
07171NC	Negative Control Wheat Spindle Streak Mosaic V.	1 vial (10 tests)



**ELASA KITS**

- **Wheat Streak Mosaic Rymovirus. (WSMV)**

Catalog No.	Designation	Size
07048S/100	Wheat Streak Mosaic Virus set / 100	100 tests
07048S/300	Wheat Streak Mosaic Virus set / 300	300 tests
07048S/500	Wheat Streak Mosaic Virus set / 500	500 tests
07048C/096	Wheat Streak Mosaic Virus complete kit / 96	96 tests
07048C/480	Wheat Streak Mosaic Virus complete kit / 480	480 tests
07048PC	Positive Control Wheat Streak Mosaic Virus	1 vial (10 tests)
07048NC	Negative Control Wheat Streak Mosaic Virus	1 vial (10 tests)

- **Zucchini Green Mottle Mosaic Tobamovirus. (ZGMMV)**

Catalog No.	Designation	Size
07167S/100	Zucchini Green Mottle Mosaic Virus set / 100	100 tests
07167S/300	Zucchini Green Mottle Mosaic Virus set / 300	300 tests
07167S/500	Zucchini Green Mottle Mosaic Virus set / 500	500 tests
07167S/1000	Zucchini Green Mottle Mosaic Virus set / 1000	1000 tests
07167C/096	Zucchini Green Mottle Mosaic Virus complete kit / 96	96 tests
07167C/480	Zucchini Green Mottle Mosaic Virus complete kit /480	480 tests
07167C/960	Zucchini Green Mottle Mosaic Virus complete kit /960	960 tests
07167PC	Positive Control Zucchini Green Mottle Mosaic Virus	1 vial (10 tests)
07167NC	Negative Control Zucchini Green Mottle Mosaic Virus	1 vial (10 tests)

- **Zucchini Yellow Fleck Potyvirus. (ZYFV)**

Catalog No.	Designation	Size
07104S/100	Zucchini Yellow Fleck Virus set / 100	100 tests
07104S/300	Zucchini Yellow Fleck Virus set / 300	300 tests
07104S/500	Zucchini Yellow Fleck Virus set / 500	500 tests
07104C/096	Zucchini Yellow Fleck Virus complete kit / 96	96 tests
07104C/480	Zucchini Yellow Fleck Virus complete kit / 480	480 tests
07104PC	Positive Control Zucchini Yellow Fleck Virus	1 vial (10 tests)
07104NC	Negative Control Zucchini Yellow Fleck Virus	1 vial (10 tests)

- **Zucchini Yellow Mosaic Potyvirus. (ZYMV) (Muskmelon Yellow Stunt Virus)**

Catalog No.	Designation	Size
07090S/100	Zucchini Yellow Mosaic Virus set / 100	100 tests
07090S/300	Zucchini Yellow Mosaic Virus set / 300	300 tests
07090S/500	Zucchini Yellow Mosaic Virus set / 500	500 tests
07090S/1000	Zucchini Yellow Mosaic Virus set / 1000	1000 tests
07090S/5000	Zucchini Yellow Mosaic Virus set / 5000	5000 tests
07090C/096	Zucchini Yellow Mosaic Virus complete kit / 96	96 tests
07090C/480	Zucchini Yellow Mosaic Virus complete kit / 480	480 tests
07090C/960	Zucchini Yellow Mosaic Virus complete kit / 960	960 tests
07090PC	Positive Control Zucchini Yellow Mosaic Virus	1 vial (10 tests)
07090NC	Negative Control Zucchini Yellow Mosaic Virus	1 vial (10 tests)

# Immunofluorescence

## What is Immunofluorescence?

---

Immunofluorescence is based on the use of specific antibodies which have been chemically conjugated to fluorescent dyes. These labeled antibodies bind directly or indirectly to cellular antigens. The technique has a number of different biological applications including plant pathogens detection.

The fluorescent dye is excited using high energy light, which is absorbed and emitted as light of a different wavelength. The emitted fluorescence can be visualized using fluorescence microscopy. The immunofluorescence technique allows for a visualization of the presence as well as the distribution of target molecules such as pathogens in plant samples.

There are two classes of immunofluorescence techniques, primary (or direct) and secondary (or indirect).

Secondary, or indirect, immunofluorescence uses two antibodies; the unlabeled first (primary) antibody specifically binds the target molecule, and the secondary antibody, which carries the fluorophore, recognises the primary antibody and binds to it. Multiple secondary antibodies can bind a single primary antibody. This provides signal amplification by increasing the number of fluorophore molecules per antigen. This protocol allows more flexibility because a variety of different secondary antibodies and detection techniques can be used for a given primary antibody.

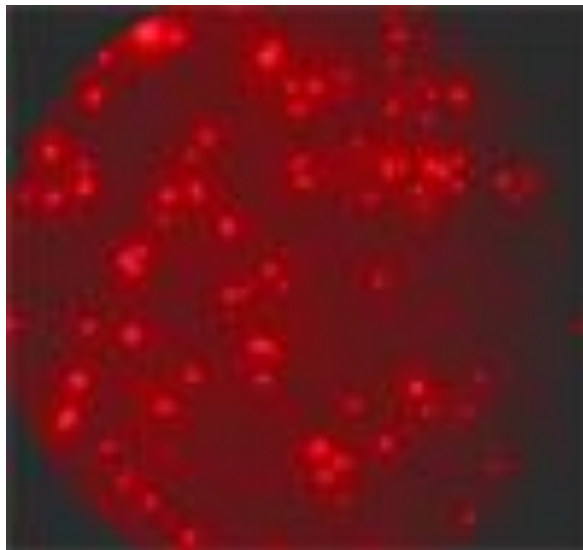


Image courtesy of Loewe®

## Immunofluorescence - ANTISERA AND CONTROLS

- **Acidovorax avenae pv. citrulli (20 µl/well) (Loewe®)**

Catalog No.	Designation	Size
07354/01	Antiserum Acidovorax a. ssp. citrulli 5000 tests	0.1 ml
07354/02	Antiserum Acidovorax a. ssp. citrulli 10 000 tests	0.2 ml
07354/10	Antiserum Acidovorax a. ssp. citrulli 50 000 tests	1.0 ml
07354/PC	Positive IF Control Acidovorax a. ssp. citrulli inactivated	1 vial

- **Clavibacter michiganensis ssp. michiganensis (20µl/well) (Loewe®)**

Catalog No.	Designation	Size
07363/01	Antiserum Clavibacter m. ssp. michiganensis 50 000 tests ex goat	0.1ml
07363/02	Antiserum Clavibacter m. ssp. michiganensis 100 000 tests ex goat	0.2 ml
07363PC	Positive IF Control C m. ssp. michiganensis inactivated (EEC countries)	1 vial
07310PC	Positive IF control RAG type unspecific	1 vial

- **Clavibacter michiganensis ssp. sepedonicus (20 µl/well) (Loewe®)**

Catalog No.	Designation	Size
07364/01	Antiserum Clavibacter m. ssp. sepedonicus 50 000 tests ex goat	0.1ml
07364/02	Antiserum Clavibacter m. ssp. sepedonicus 100 000 tests ex goat	0.2 ml
07364PC	Positive IF Control C.m. ssp. sepedonicus inactivated (EEC countries)	1 vial
07310PC	Positive IF control RAG type unspecific	1 vial

•

- **Dickeya (Pectobacterium) chrysanthemi (20µl/well) (Loewe®)**

Catalog No.	Designation	Size
07381/01	Antiserum Dickeya chrysanthemi 5 000 tests	0.1 ml
07381/02	Antiserum Dickeya chrysanthemi 10 000 tests	0.2 ml
07381/10	Antiserum Dickeya chrysanthemi 100 000 tests	1.0 ml
07381PC	Positive IF Control Dickeya chrys. inactivated	1 vial
07310PC	Positive IF control RAG type unspecific	1 vial

**IMMUNOFLUORESCENCE**

- **Pantoea stewartii ssp. stewartii (20 µl/well) (Loewe®)**

Catalog No.	Designation	Size
07329/01	Antiserum Pantoea st. ssp. stewartii 5 000 tests	0.1 ml
07329/02	Antiserum Pantoeae st. ssp. stewartii 10 000 tests	0.2 ml
07329/10	Antiserum Pantoea st. ssp. stewartii 50 000 tests	1.0 ml
07329PC	Positive IF Control Pantoea st. ssp. stewartii inactivated	1 vial

- **Plasmopara viticola (20 µl/well) (Loewe®)**

Catalog No.	Designation	Size
07355/02	Antiserum Plasmopara viticola 10 000 tests	0.2 ml
07355/10	Antiserum Plasmopara viticola 50 000 tests	1 ml

- **Pseudomonas syringae pv. tomato (20 µl/well) (Loewe®)**

Catalog No.	Designation	Size
07339/01	Antiserum Pseudomonas.s. pv. tomato 1 000 tests	0.1 ml
07339/02	Antiserum Pseudomonas.s. pv. tomato 2 000 tests	0.2 ml
07339/10	Antiserum Pseudomonas s. pv. tomato 10 000 tests	1.0 ml
07339PC	Positive Control Pseudomonas s. pv. tomato inactivated	1 vial

- **Ralstonia solanacearum (20µl/well) (Loewe®)**

Catalog No.	Designation	Size
07356/01	Antiserum Ralstonia solanacearum 50 000 tests ex goat	0.1 ml
07356/02	Antiserum Ralstonia solanacearum 100 000 tests ex goat	0.2 ml
07356PC	Positive Control R. solanacearum inactivated (EEC countries only)	1 vial
07310PC	Positive IF control RAG type unspecific	1 vial

- **Xanthomonas arboricola pv. corylina (20µl/well) (Loewe®)**

Catalog No.	Designation	Size
07373/01	Antiserum Xanthomonas a. pv. corylina 3000 tests	0.1 ml
07373/02	Antiserum Xanthomonas.a. pv. corylina 6000 tests	0.2 ml
07373/10	Antiserum Xanthomonas a. pv. corylina 30 000 tests	1.0 ml
07373PC	Positive IF Control Xanthomonas a. pv. corylina inactivated	1 vial

**IMMUNOFLUORESCENCE**

- **Xanthomonas axonopodis pv. begoniae (20µl/well) (Loewe®)**

Catalog No.	Designation	Size
07325/01	Antiserum Xanthomonas a. pv. begoniae ca. 5 000 tests	0.1 ml
07325/02	Antiserum Xanthomonas a. pv. begoniae ca. 10 000 tests	0.2 ml
07325/10	Antiserum Xanthomonas a. pv. begoniae ca. 50 000 tests	1.0 ml
07325PC	Positive IF Control Xanthomonas a. pv. begoniae inactivated	1 vial

- **Xanthomonas axonopodis pv. phaseoli var. fuscans (20µl/well) (Loewe®)**

Catalog No.	Designation	Size
07361/01	Antiserum Xanthomonas a. pv. phaseoli ca. 5000 tests	0.1 ml
07361/02	Antiserum Xanthomonas a. pv. phaseoli ca. 10 000 tests	0.2 ml
07361/10	Antiserum Xanthomonas a. pv. phaseoli ca. 50 000 tests	1.0 ml
07361PC	Positive IF Control Xanthomonas a. pv. phaseoli inactivated	1 vial

- **Xanthomonas campestris Lobelia isolate (20µl/well) (Loewe®)**

Catalog No.	Designation	Size
07324/01	Antiserum Xanthomonas c. Lobelia ca. 5 000 tests	0.1 ml
07324/02	Antiserum Xanthomonas c. Lobelia ca. 10 000 tests	0.2 ml
07324/10	Antiserum Xanthomonas c. Lobelia ca. 50 000 tests	1.0 ml
07324PC	Positive IF Control Xanthomonas c. Lobelia inactivated	1 vial

- **Xanthomonas campestris pv. vesicatoria (20µl/ml) (Loewe®)**

Catalog No.	Designation	Size
07331/01	Antiserum Xanthomonas c. pv. vesicatoria 2 000 tests	0.1 ml
07331/02	Antiserum Xanthomonas c. pv. vesicatoria 4 000 tests	0.2 ml
07331/10	Antiserum Xanthomonas c. pv. vesicatoria 20 000 tests	1.0 ml
07331/PC	Positive IF control Xanthomonas c. pv. vesicatoria inactivated	1 vial

- **Xanthomonas hortorum pv. pelargonii (20µl/ml) (Loewe®)**

Catalog No.	Designation	Size
07377/01	Antiserum Xanthomonas h. pv. pelargonii 5 000 tests	0.1 ml
07377/02	Antiserum Xanthomonas h. pv. pelargonii 10 000 tests	0.2 ml
07377/10	Antiserum Xanthomonas h. pv. pelargonii 50 000 tests	1.0 ml
07377PC	Positive IF Control Xanthomonas h. pv. pelargonii inactivated	1 vial

## IMMUNOFLUORESCENCE

- *Xylella fastidiosa* (Loewe®)

Catalog No.	Designation	Size
07319/01	Antiserum <i>Xylella fastidiosa</i> ca. 5 000 tests	0.1 ml
07319/02	Antiserum <i>Xylella fastidiosa</i> ca. 10 000 tests	0.2 ml
07319/10	Antiserum <i>Xylella fastidiosa</i> ca. 50 000 tests	1.0 ml
07319PC	Positive IF control <i>Xylella fastidiosa</i> inactivated	1 vial

## Immunofluorescence - SECONDARY CONJUGATES

- **Goat-anti-rabbit IgG(H+L)Cy3™ lyophil.**

07204	Goat-anti-rabbit IgG(H+L)Cy3™	1.5 mg
-------	-------------------------------	--------

- **Goat-anti-rabbit IgG(H+L)FITC lyophil.**

07201	Goat-anti-rabbit IgG(H+L)FITC	1.5 mg
-------	-------------------------------	--------

- **Rabbit-anti-goat(H+L)Cy3™ lyophil.**

07202	Rabbit-anti-goat(H+L)Cy3™	1.5 mg
-------	---------------------------	--------

- **Rabbit-anti-goat(H+L)FITC lyophil.**

07200	Rabbit-anti-goat(H+L)FITC	1.5 mg
-------	---------------------------	--------

## Immunofluorescence - DISPOSABLES

- Cover Slides 24 x 60 mm (Loewe®)

Catalog No.	Designation	Size
07401/1000	Cover Slides 24 x 60mm	1000 slides

- Multiwell Slides IFT 10 x 6 blue(Loewe®)

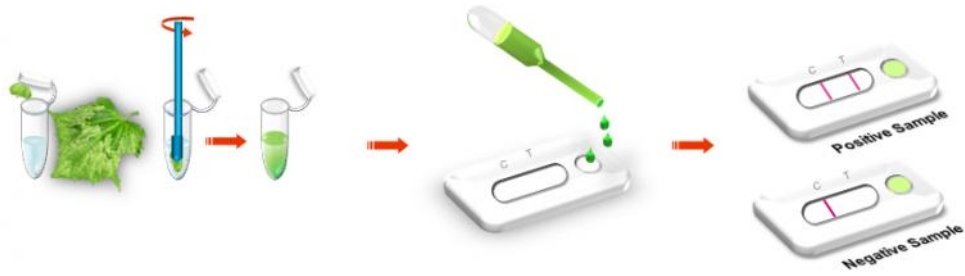
Catalog No.	Designation	Size
07400/100	Multiwell Slides IFT 10 x 6 blue	2 x 50 slides



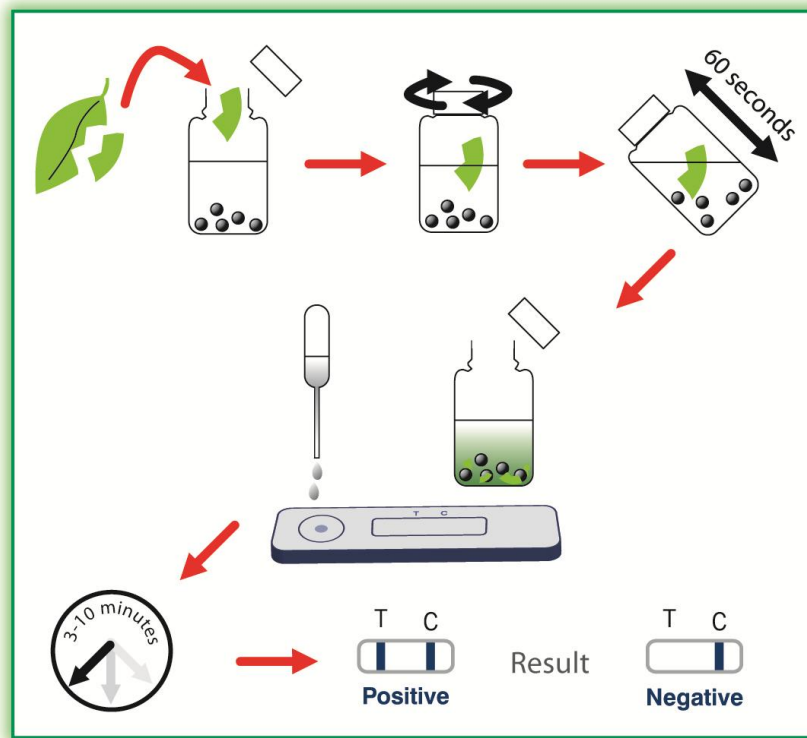
# Lateral flow Kits

## What is Lateral flow?

### Loewe® -FastKits



### Pocket Diagnostic® -Rapid tests



## Lateral flow - Bacteria

- **Clavibacter m. ssp. Michiganensis**

LF07063	LOEWE®FAST Kit Clavibacter m. ssp. michiganensis	Size
	<b>For rapid detection of C.m. ssp. michiganensis in suspected cultures</b>	
LF07063/05	LOEWE®FAST Kit Clavibacter m. ssp. michiganensis	5 tests
LF07063/20	LOEWE®FAST Kit Clavibacter m. ssp. michiganensis	20 tests
LF07063/50	LOEWE®FAST Kit Clavibacter m. ssp. michiganensis	50 tests

- **Clavibacter m. ssp. Sepedonicus**

LF07064	LOEWE®FAST Kit Clavibacter m. ssp. sepedonicus	Size
	<b>For rapid detection of C.m. ssp. sepedonicus in suspected cultures</b>	
LF07064/05	LOEWE®FAST Kit Clavibacter m. ssp. Sepedonicus	5 tests
LF07064/20	LOEWE®FAST Kit Clavibacter m. ssp. sepedonicus	20 tests
LF07064/50	LOEWE®FAST Kit Clavibacter m. ssp. sepedonicus	50 tests

- **Erwinia Amylovora**

PD51123	Pocket Diagnostic® Erwinia Amylovora Rapid Test	Size
PD51123	Pocket Diagnostic® Erwinia Amylovora Rapid Test	Box of 4

- **Ralstonia solanacearum**

LF07056	LOEWE®FAST Kit Ralstonia solanacearum	Size
	<b>For rapid detection of R. solanacearum in suspected cultures</b>	
LF07056/05	LOEWE®FAST Kit Ralstonia solanacearum	5 tests
LF07056/20	LOEWE®FAST Kit Ralstonia solanacearum	20 tests
LF07056/50	LOEWE®FAST Kit Ralstonia solanacearum	50 tests

- **Xanthomonas hortorum pv. Pelargonii**

LF07077	LOEWE®FAST Kit Xanthomonas hortorum pv. pelargonii	Size
	<b>For rapid detection of X. h. pv. pelargonii in suspected cultures</b>	
LF07077/05	LOEWE®FAST Kit X. hortorum pv. pelargonii	5 tests
LF07077/20	LOEWE®FAST Kit X. hortorum pv. pelargonii	20 tests
LF07077/50	LOEWE®FAST Kit X. hortorum pv. pelargonii	50 tests

## LATERAL FLOW KITS

- **Xylella fastidiosa**

<b>LF07119</b>	<b>LOEWE®FAST Kit Xylella fastidiosa</b>	<b>Size</b>
	<b>For rapid detection of Xylella fastidiosa</b>	
LF07119/05	LOEWE®FAST Kit Xylella fastidiosa	5 tests
LF07119/20	LOEWE®FAST Kit Xylella fastidiosa	20 tests
LF07119/50	LOEWE®FAST Kit Xylella fastidiosa	50 tests

- **Xylophilus ampelinus LOEWE®FAST Kit**

<b>LF07138</b>	<b>LOEWE®FAST Kit Xylophilus ampelinus</b>	<b>Size</b>
	<b>For rapid detection of Xylophilus ampelinus</b>	
LF07138/05	LOEWE®FAST Kit Xylophilus ampelinus	5 tests
LF07138/20	LOEWE®FAST Kit Xylophilus ampelinus	20 tests
LF07138/50	LOEWE®FAST Kit Xylophilus ampelinus	50 tests

## Lateral flow - Fungi

- Botrytis cinerea

LF07158	LOEWE®FAST Kit Botrytis cinerea grapevine isolate	Size
	<b>For rapid detection of. B. cinerea</b>	
LF07158/05	LOEWE®FAST Kit Botrytis cinerea grapevine isolate	5 tests
LF07158/20	LOEWE®FAST Kit Botrytis cinerea grapevine isolate	20 tests
LF07158/50	LOEWE®FAST Kit Botrytis cinerea grapevine isolate	50 tests

- Phytophthora

PD51123	Pocket Diagnostic® Phytophthora Rapid Test	Size
PD51125	Pocket Diagnostic® Phytophthora Rapid Test	Single
PD51126	Pocket Diagnostic® Phytophthora Rapid Test	Box of 50

## Lateral flow - Viruses

- **Apple Mosaic Virus (ApMV)**

LF07054	LOEWE®FAST Kit Apple Mosaic Virus hop isolate	Size
	<b>For rapid detection of ApMV in suspected plant material</b>	
LF07054/05	LOEWE®FAST Kit Apple Mosaic Virus hop isolate	5 tests
LF07054/20	LOEWE®FAST Kit Apple Mosaic Virus hop isolate	20 tests
LF07054/50	LOEWE®FAST Kit Apple Mosaic Virus hop isolate	50 tests

- **Cucumber Green Mottle Mosaic Virus (CGMMV)**

LF07022	LOEWE®FAST Kit Cucumber Green Mottle Mosaic Virus	Size
	<b>For rapid detection of CGMMV in suspected leaves</b>	
LF07022/05	LOEWE®FAST Kit Cucumber Green Mottle Mosaic Virus	5 tests
LF07022/20	LOEWE®FAST Kit Cucumber Green Mottle Mosaic Virus	20 tests
LF07022/50	LOEWE®FAST Kit Cucumber Green Mottle Mosaic Virus	50 tests

- **Cucumber Mosaic Virus (CMV)**

LF07186	LOEWE®FAST Kit Cucumber Mosaic Virus	Size
	<b>For rapid detection of CMV in suspected leaves</b>	
LF07186/05	LOEWE®FAST Kit Cucumber Mosaic Virus	5 tests
LF07186/20	LOEWE®FAST Kit Cucumber Mosaic Virus	20 tests
LF07186/50	LOEWE®FAST Kit Cucumber Mosaic Virus	50 tests

- **Impatiens Necrotic Spot Virus (INSV)**

LF07505	LOEWE®FAST Kit Impatiens Necrotic Spot Virus	Size
	<b>For rapid detection of INSV in suspected leaves</b>	
LF07505/05	LOEWE®FAST Kit Impatiens Necrotic Spot Virus	5 tests
LF07505/20	LOEWE®FAST Kit Impatiens Necrotic Spot Virus	20 tests
LF07505/50	LOEWE®FAST Kit Impatiens Necrotic Spot Virus	50 tests

- **Melon Necrotic Spot Virus (MNSV)**

LF07097	LOEWE®FAST Kit Melon Necrotic Spot Virus	Size
	<b>For rapid detection of MNSV in suspected leaves</b>	
LF07097/05	LOEWE®FAST Kit Melon Necrotic Spot Virus	5 tests
LF07097/20	LOEWE®FAST Kit Melon Necrotic Spot Virus	20 tests
LF07097/50	LOEWE®FAST Kit Melon Necrotic Spot Virus	50 tests

**L A T E R A L F L O W K I T S**

- **Pepino Mosaic Virus (PepMV)**

<b>LF07128</b>	<b>LOEWE®FAST Kit Pepino Mosaic Virus</b>	<b>Size</b>
	<b>For rapid detection of PepMV in suspected leaves</b>	
LF07128/05	LOEWE®FAST Kit Pepino Mosaic Virus	5 tests
LF07128/20	LOEWE®FAST Kit Pepino Mosaic Virus	20 tests
LF07128/50	LOEWE®FAST Kit Pepino Mosaic Virus	50 tests

- **Pepper Veinal Mottle Virus (PVMV)**

<b>LF07159</b>	<b>LOEWE®FAST Kit Pepper Veinal Mottle Virus</b>	<b>Size</b>
	<b>For rapid detection of PVMV in suspected leaves</b>	
LF159/05	LOEWE®FAST Pepper Veinal Mottle Virus	5 tests
LF159/20	LOEWE®FAST Pepper Veinal Mottle Virus	20 tests
LF159/50	LOEWE®FAST Pepper Veinal Mottle Virus	50 tests

- **Potato Virus X (PVX)**

<b>LF07037</b>	<b>LOEWE®FAST Kit Potato Virus X</b>	<b>Size</b>
	<b>For rapid detection of PVX in suspected leaves</b>	
LF07037/05	LOEWE®FAST Kit Potato Virus X	5 tests
LF07037/20	LOEWE®FAST Kit Potato Virus X	20 tests
LF07037/50	LOEWE®FAST Kit Potato Virus X	50 tests

- **Potato Virus Y (PVY)**

<b>LF07038</b>	<b>LOEWE®FAST Kit Potato Virus Y</b>	<b>Size</b>
	<b>For rapid detection of PVY in suspected leaves</b>	
LF07038/05	LOEWE®FAST Kit Potato Virus Y	5 tests
LF07038/20	LOEWE®FAST Kit Potato Virus Y	20 tests
LF07038/50	LOEWE®FAST Kit Potato Virus Y	50 tests

- **Prune Dwarf Virus (PDV)**

<b>LF07051</b>	<b>LOEWE®FAST Kit Prune Dwarf Virus</b>	<b>Size</b>
	<b>For rapid detection of PDV in suspected plant material</b>	
LF07051/05	LOEWE®FAST Kit Prune Dwarf Virus	5 tests
LF07051/20	LOEWE®FAST Kit Prune Dwarf Virus	20 tests
LF07051/50	LOEWE®FAST Kit Prune Dwarf Virus	50 tests

- **Prunus Necrotic Ringspot Virus (PNRV)**

<b>LF07052</b>	<b>LOEWE®FAST Kit Prunus Necrotic Ringspot Virus</b>	<b>Size</b>
	<b>For rapid detection of PNRV in suspected plant material</b>	
LF07052/05	LOEWE®FAST Kit Prunus Necrotic Ringspot Virus	5 tests
LF07052/20	LOEWE®FAST Kit Prunus Necrotic Ringspot Virus	20 tests

**L A T E R A L F L O W K I T S**

LF07052/50	LOEWE®FAST Kit Prunus Necrotic Ringspot Virus	50 tests
------------	---	----------

- **Tobacco Mosaic Virus (TMV)**

LF07042	LOEWE®FAST Kit Tobacco Mosaic Virus	Size
	<b>For rapid detection of TMV in symptom bearing leaves</b>	
LF07042/05	LOEWE®FAST Kit Tobacco Mosaic Virus	5 tests
LF07042/20	LOEWE®FAST Kit Tobacco Mosaic Virus	20 tests
LF07042/50	LOEWE®FAST Kit Tobacco Mosaic Virus	50 tests

- **Tobamoscreen LOEWE®FAST Kit**

LF07184	Tobamoscreen LOEWE®FAST Kit	Size
	<b>For rapid detection of ToMV, TMV, PMMoV, and ToBRFV in symptom bearing leaves</b>	
LF07184/05	LOEWE®FAST Kit Tobamoscreen	5 tests
LF07184/20	LOEWE®FAST Kit Tobamoscreen	20 tests
LF07184/50	LOEWE®FAST Kit Tobamoscreen	50 tests

- **Tomato Mosaic Virus (ToMV)**

LF07047	LOEWE®FAST Kit Tomato Mosaic Virus	Size
	<b>For rapid detection of ToMV in symptom bearing leaves</b>	
LF07047/05	LOEWE®FAST Kit Tomato Mosaic Virus	5 tests
LF07047/20	LOEWE®FAST Kit Tomato Mosaic Virus	20 tests
LF07047/50	LOEWE®FAST Kit Tomato Mosaic Virus	50 tests

- **Tomato Spotted Wilt Virus (TSWV)**

LF07501	LOEWE®FAST Kit Tomato Spotted Wilt Virus	Size
	<b>For rapid detection of TSWV in symptom bearing leaves</b>	
LF07501/05	LOEWE®FAST Kit Tomato Spotted Wilt Virus	5 tests
LF07501/20	LOEWE®FAST Kit Tomato Spotted Wilt Virus	20 tests
LF07501/50	LOEWE®FAST Kit Tomato Spotted Wilt Virus	50 tests

- **TSWV, TCSV, GRSV**

LF07509	LOEWE®FAST Kit TSWV, TCSV, GRSV	Size
	<b>For rapid detection of TSWV, TCSV and GRSV</b>	
LF07509/05	LOEWE®FAST Kit TSWV, TCSV, GRSV	5 tests
LF07509/20	LOEWE®FAST Kit TSWV, TCSV, GRSV	20 tests
LF07509/50	LOEWE®FAST Kit TSWV, TCSV, GRSV	50 tests

## Lateral Flow – Supplements and Buffers

- Lateral Flow Supplements (Loewe®)

LF07810	Lateral Flow Supplements	Size
LF07810/05	Micro-pestle for leaf tissue homogenization	5 pieces
LF07810/20	Micro-pestle for leaf tissue homogenization	20 pieces
LF07810/50	Micro-pestle for leaf tissue homogenization	50 pieces

- Sample Buffer for LOEWE®FAST Kits

LF07810	Lateral Flow Supplements	Size
LF700BU/001	Sample Buffer for LOEWE®FAST Kits (not for use with grape)	1 liter



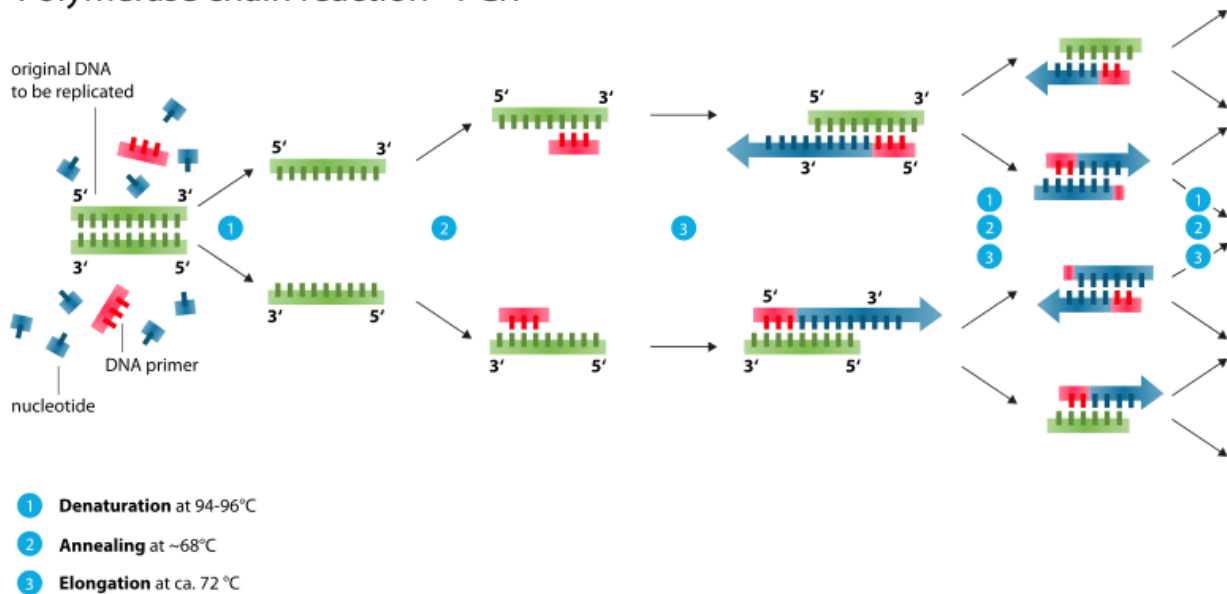
# PCR Kits

## What is PCR?

**PCR or Polymerase chain reaction** is a technique used in molecular biology to specifically amplify a single copy or a few copies of a specific segment of DNA across several orders of magnitude, generating thousands to millions of copies of a particular DNA sequence. It is an easy, cheap, and reliable way to repeatedly replicate a targeted segment of DNA.

PCR amplifies a specific region of a DNA strand (the DNA target). Most PCR methods amplify DNA fragments of between 0.1 and 10 kilo base pairs (kbp), although some techniques allow for amplification of fragments up to 40 kbp in size. This technique is very specific, fast and reliable for the detection of pathogen in plant samples.

### Polymerase chain reaction - PCR



## PCR - Bacteria

- **Acidovorax avanae ssp. citrulli PCR (bacterial fruit blotch, seedling blight of cucurbits) (Loewe®)**

Catalog No.	Designation	Size
08154S/100	Acidovorax avanae ssp. citrulli PCR set	100 tests
08154C/100	Acidovorax avanae ssp. citrulli complete PCR reaction kit	100 tests
08154PC	Positive PCR Control Acidovorax avanae ssp. citrulli	1 vial (10 reactions)
08154NC	Negative PCR Control Acidovorax avanae ssp. citrulli	1 vial (10 reactions)

- **Clavibacter michiganensis ssp. Michiganensis (Loewe®)**

Catalog No.	Designation	Size
08063S/100	Clavibacter michiganensis ssp. michiganensis PCR set	100 tests
08063C/100	Clavibacter michiganensis ssp. michiganensis complete PCR reaction kit	100 tests
08063PC	Positive PCR Control Clavibacter m. ssp. michiganensis	1 vial (10 reactions)
08063NC	Negative PCR Control Clavibacter m. ssp. michiganensis	1 vial (10 reactions)

- **Clavibacter michiganensis ssp. Sepedonicus (Loewe®)**

Catalog No.	Designation	Size
08064S/100	Clavibacter m. ssp. sepedonicus PCR set	100 tests
08064C/100	Clavibacter m. ssp. sepedonicus complete PCR reaction kit	100 tests
08064PC	Positive PCR Control C. m. sepedonicus	1 vial (10 reactions)
08064NC	Negative PCR Control C. m. sepedonicus	1 vial (10 reactions)

- **Curtobacterium flaccumfaciens pv. flaccumfaciens PCR (Loewe®)**

Catalog No.	Designation	Size
08198S/100	C. flaccumfaciens pv. flaccumfaciens PCR reaction set	100 tests
08198C/100	C. flaccumfaciens pv. flaccumfaciens complete PCR react. kit	100 tests
08198PC	Positive Control C. flaccumfaciens pv. flaccumfaciens	1 vial (10 reactions)
08198NC	Negative Control C. flaccumfaciens pv. flaccumfaciens	1 vial (10 reactions)

- **Erwinia amylovora nested PCR (Loewe®)**

Catalog No.	Designation	Size
08005S/100	Erwinia amylovora nested PCR set	100 tests
08005C/100	Erwinia amylovora nested complete PCR reaction kit	100 tests
08005PC	Positive PCR Control Erwinia amylovora	1 vial (10 reactions)
08005NC	Negative PCR Control Erwinia amylovora	1 vial (10 reactions)

**PCR KITS**

- **Erwinia amylovora (Loewe®)**

Catalog No.	Designation	Size
08010S/100	Erwinia amylovora PCR set	100 tests
08010C/100	Erwinia amylovora complete PCR reaction kit	100 tests
08010PC	Positive PCR Control Erwinia amylovora	1 vial (10 reactions)
08010NC	Negative PCR Control Erwinia amylovora	1 vial (10 reactions)

- **Pantoea stewartii ssp. Stewartii (Loewe®)**

Catalog No.	Designation	Size
08129S/100	Pantoea stewartii ssp. stewartii PCR set	100 tests
08129C/100	Pantoea stewartii ssp. stewartii complete PCR kit	100 tests
08129PC	Positive PCR Control Pantoea stewartii ssp. stewartii	1 vial (10 reactions)
08129NC	Negative PCR Control Pantoea stewartii ssp. stewartii	1 vial (10 reactions)

- **Ralstonia solanacearum (Loewe®)**

Catalog No.	Designation	Size
08056S/100	Ralstonia solanacearum PCR set	100 tests
08056C/100	Ralstonia solanacearum complete PCR reaction kit	100 tests
08056PC	Positive PCR Control Ralstonia solanacearum	1 vial (10 reactions)
08056NC	Negative PCR Control Ralstonia solanacearum	1 vial (10 reactions)

- **Rhodococcus fascians PCR pathogenic form (Loewe®)**

Catalog No.	Designation	Size
08170S/100	Rhodococcus fascians PCR set -	100 tests
08170C/100	Rhodococcus fascians complete PCR reaction kit - pathogenic form	100 tests
08170PC	Positive PCR Control Rhodococcus fascians	1 vial (10 reactions)
08170NC	Negative PCR Control Rhodococcus fascians	1 vial (10 reactions)

- **Xanthomonas arboricola pv. Pruni (Loewe®)**

Catalog No.	Designation	Size
08162S/100	X. arboricola pv. pruni PCR set	100 tests
08162C/100	X. arboricola pv. pruni complete PCR reaction kit	100 tests
08162PC	Positive PCR Control X. arboricola pv. pruni	1 vial (10 reactions)
08162NC	Negative PCR Control X. arboricola pv. pruni	1 vial (10 reactions)

- **Xanthomonas citri subsp. citri (Loewe®)**

**PCR KITS**

Catalog No.	Designation	Size
08102S/100	Xanthomonas citri subsp. citri PCR set	100 tests
08102C/100	Xanthomonas citri subsp. citri complete PCR reaction kit	100 tests
08102PC	Positive PCR Control X. citri subsp. citri	1 vial (10 reactions)
08102NC	Negative PCR Control X. citri subsp. citri	1 vial (10 reactions)

- **Xanthomonas hortorum pv. pelargonii PCR (Loewe®)**

Catalog No.	Designation	Size
08077S/100	Xanthomonas hortorum pv. pelargonii PCR set	100 tests
08070C/100	Xanthomonas hortorum pv. pelargonii complete PCR reaction kit	100 tests
08077PC	Positive PCR Control Xanthomonas hortorum pv. pelargo	1 vial (10 reactions)
08077NC	Negative PCR Control Xanthomonas hortorum pv. pelargonii	1 vial (10 reactions)

- **Xanthomonas oryzae (Loewe®)**

Catalog No.	Designation	Size
08132S/100	Xanthomonas oryzae PCR set	100 tests
08132C/100	Xanthomonas oryzae complete PCR reaction kit	100 tests
08132PC	Positive PCR Control Xanthomonas oryzae	1 vial (10 reactions)
08132NC	Negative PCR control Xanthomonas oryzae	1 vial (10 reactions)

- **Xylella fastidiosa (Loewe®)**

Catalog No.	Designation	Size
08119S/100	Xylella fastidiosa PCR set	100 tests
08119C/100	Xylella fastidiosa complete PCR reaction kit	100 tests
08119PC	Positive PCR Control Xylella fastidiosa	1 vial (10 reactions)
08119NC	Negative PCR Control Xylella fastidiosa	1 vial (10 reactions)

- **Xylophilus ampelinus (Loewe®)**

Catalog No.	Designation	Size
08138S/100	Xylophilus ampelinus PCR set	100 tests
08138C/100	Xylophilus ampelinus complete PCR reaction kit	100 tests
08138PC	Positive PCR Control Xylophilus ampelinus	1 vial (10 reactions)
08138NC	Negative PCR Control Xylophilus ampelinus	1 vial (10 reactions)

## PCR – Extraction Kits

- **Plant DNA Extraction Kit for Plants (Loewe®)**

Catalog No.	Designation	Size
0845DNA/050	Plant DNA Extraction Kit for Plants - lysis buffers - precipitation buffer - binding and washing solution, proteinase K - prefilter and spin filters with receiver and elution tubes - manual	50 extractions

- **Plant RNA Extraction Kit for Plants (Loewe®)**

Catalog No.	Designation	Size
0945RNA/050	Plant RNA Extraction Kit for Plants - 2 different lysis buffers - washing solutions - RNase-free water - spin filters with receiver and elution tubes - manual	50 extractions

## PCR - Fungi

- **Fusarium culmorum (Loewe®)**

Catalog No.	Designation	Size
08007S/100	Fusarium culmorum PCR set	100 tests
08007C/100	Fusarium culmorum complete PCR reaction kit	100 tests
08007PC	Positive PCR Control F. culmorum	1 vial (10 reactions)
08007NC	Negative PCR Control F. culmorum	1 vial (10 reactions)

- **Fusarium graminearum (Loewe®)**

Catalog No.	Designation	Size
08008S/100	Fusarium graminearum PCR set	100 tests
08008C/100	Fusarium graminearum complete PCR reaction kit	100 tests
08008PC	Positive PCR Control F. graminearum	1 vial (10 reactions)
08008NC	Negative PCR Control F. graminearum	1 vial (10 reactions)

- **Phytophthora fragariae (Loewe®)**

Catalog No.	Designation	Size
08006S/100	Phytophthora fragariae PCR set	100 tests
08006C/100	Phytophthora fragariae complete PCR reaction kit	100 tests
08006PC	Positive PCR Control Phytophthora fragariae	1 vial (10 reactions)
08006NC	Negative PCR Control Phytophthora fragariae	1 vial (10 reactions)

## PCR - Phytoplasma

- **Apple Proliferation Group Phytoplasma (Loewe®)**

Catalog No.	Designation	Size
08000S/100	Apple Proliferation Group Phytoplasma PCR set	100 tests
08000C/100	Apple Proliferation Group Phytoplasma complete PCR reaction kit	100 tests
08000PC	Positive PCR Control Apple Proliferation Group Phytoplasma	1 vial (10 reactions)
08000NC	Negative PCR Control Apple Proliferation Group Phytoplasma	1 vial (10 reactions)

- **Aster Yellows Phytoplasma (Loewe®)**

Catalog No.	Designation	Size
08002S/100	Aster Yellows Phytoplasma PCR set	100 tests
08002C/100	Aster Yellows Phytoplasma complete PCR reaction kit	100 tests
08002PC	Positive PCR Control Aster Yellows Phytoplasma	1 vial (10 reactions)
08002NC	Negative PCR Control Elm Yellows Phytoplasma	1 vial (10 reactions)

- **Elm Yellows Phytoplasma (Loewe®)**

Catalog No.	Designation	Size
08003S/100	Elm Yellows Phytoplasma PCR set	100 tests
08003C/100	Elm Yellows Phytoplasma complete PCR reaction kit	100 tests
08003PC	Positive PCR Control Elm Yellows Phytoplasma	1 vial (10 reactions)
08003NC	Negative PCR Control Elm Yellows Phytoplasma	1 vial (10 reactions)

- **Stolbur Phytoplasma (Loewe®)**

Catalog No.	Designation	Size
08004/100	Stolbur Phytoplasma PCR set	100 tests
08004C/100	Stolbur Phytoplasma complete PCR reaction kit	100 tests
08004PC	Positive PCR Control Stolbur Phytoplasma	1 vial (10 reactions)
08004NC	Negative PCR Control Stolbur Phytoplasma	1 vial (10 reactions)

- **Universal Phytoplasma nested (Loewe®)**

Catalog No.	Designation	Size
08009S/100	Universal Phytoplasma nested PCR set	100 tests
08009C/100	Universal Phytoplasma nested complete PCR reaction kit	100 tests
08009PC	Positive PCR Control Universia Phytoplasma nested	1 vial (10 reactions)
08009NC	Negative PCR Control Universia Phytoplasma nested	1 vial (10 reactions)

## DNA PCR - Viruses

- Pea Necrotic Yellow Dwarf Virus DNA PCR (Loewe®)

Catalog No.	Designation	Size
08112C/100	Pea Necrotic Yellow Dwarf Virus PCR complete DNA PCR reaction kit	100 tests
08112PC	Positive PCR Control Pea Necrotic Yellow Dwarf Virus (DNA-based)	100 tests
08112NC	Negative Control Pea Necrotic Yellow Dwarf Virus (DNA-based)	1 vial (10 reactions)

- Tomato Leaf Curl New Delhi Virus DNA PCR (Loewe®)

Catalog No.	Designation	Size
08180C/100	Tomato Leaf Curl New Delhi V. complete DNA PCR react. kit	100 tests
08180PC	Positive PCR Control Tomato Leaf Curl New Delhi V. (DNA-based)	100 tests
08180NC	Negative Control Tomato Leaf Curl New Delhi V. (DNA-based)	1 vial (10 reactions)

- Tomato Yellow Leafcurl Virus DNA PCR (Loewe®)

Catalog No.	Designation	Size
08177C/100	Tomato Yellow Leafcurl Virus complete DNA PCR reaction kit	100 tests
08177PC	Positive PCR Control Tomato Yellow Leafcurl Virus (DNA-based)	100 tests
08177NC	Negative PCR Control Tomato Yellow Leafcurl Virus (DNA-based)	1 vial (10 reactions)



## RNA PCR - Viruses

- **Apple Chlorotic Leafspot Virus (premixed PCR kit - Loewe®)**

Catalog No.	Designation	Size
09103C/100	Apple Chlorotic Leafspot Virus complete RNA PCR reaction kit	100 tests
09103PC	Positive PCR Control Apple Chlorotic Leafspot Virus (DNA based)	1 vial (10 reactions)
09103NC	Negative PCR Control Apple Chlorotic Leafspot Virus (DNA based)	1 vial (10 reactions)

- **Apple Mosaic Virus (premixed PCR kit - Loewe®)**

Catalog No.	Designation	Size
09054C/100	Apple Mosaic Virus complete RNA PCR reaction kit	100 tests
09054PC	Positive PCR Control Apple Mosaic Virus Virus (DNA based)	1 vial (10 reactions)
09054NC	Negative PCR Control Apple Mosaic Virus Virus (DNA based)	1 vial (10 reactions)

- **Apple stem Grooving Virus (premixed PCR kit - Loewe®)**

Catalog No.	Designation	Size
09085C/100	Apple Stem Grooving Virus complete RNA PCR reaction kit	100 tests
09085PC	Positive PCR Control Apple Stem Grooving Virus	1 vial (10 reactions)
09085NC	Negative PCR Control Apple Stem Grooving Virus	1 vial (10 reactions)

- **BaMMV/BaYMV Duplex RNA PCR (premixed PCR kit - Loewe®)**

RNA PCR complete reaction kit for the simultaneous detection and discrimination of BaMMV/BaYMV within one tube/one step.

Catalog No.	Designation	Size
09276C/100	BaMMV/BaYMV Virus complete RNA PCR reaction kit	100 tests
09276PC	Positive PCR Control BaMMV/BaYMV Virus	1 vial (10 reactions)
09276NC	Negative PCR Control BaMMV/BaYMV Virus	1 vial (10 reactions)

- **Cherry Leafroll Virus (premixed PCR kit - Loewe®)**

Catalog No.	Designation	Size
09093C/100	Cherry Leafroll Virus complete RNA PCR reaction kit	100 tests
09093PC	Positive PCR Control Cherry Leafroll Virus	1 vial (10 reactions)
09093NC	Negative PCR Control Cherry Leafroll Virus	1 vial (10 reactions)

**PCR KITS**

- **Citrus Tristeza Virus (premixed PCR kit - Loewe®)**

Catalog No.	Designation	Size
09099C/100	Citrus Tristeza Virus RNA complete PCR reaction kit	100 tests
09099PC	Positive Control Citrus Tristeza (DNA based)	1 vial (10 reactions)
09099NC	Negative Control Citrus Tristeza (DNA based)	1 vial (10 reactions)

- **Cucurbit Vein Yellowing Virus (premixed PCR kit - Loewe®)**

Catalog No.	Designation	Size
09110C/100	Cucurbit Vein Yellowing Virus complete RNA PCR reaction kit	100 tests
09110PC	Positive PCR Control Cucurbit Vein Yellowing Virus (DNA based)	1 vial (10 reactions)
09110NC	Negative PCR Control Cucurbit Vein Yellowing Virus (DNA based)	1 vial (10 reactions)

- **Impatiens Necrotic Spot Virus (premixed PCR kit - Loewe®)**

Catalog No.	Designation	Size
09505C/100	Impatiens Necrotic Spot Virus complete RNA PCR reaction kit	100 tests
09505PC	Positive PCR Control Impatiens Necrotic Spot Virus	1 vial (10 reactions)
09505NC	Negative PCR Control Impatiens Necrotic Spot Virus	1 vial (10 reactions)

- **Plum Pox Virus Universal (premixed PCR kit - Loewe®)**

Catalog No.	Designation	Size
09186C/100	Plum Pox Virus complete RNA PCR reaction kit	100 tests
09186PC	Positive PCR Control Plum Pox Virus (DNA based)	1 vial (10 reactions)
09186NC	Negative PCR Control Plum Pox Virus (DNA based)	1 vial (10 reactions)

- **Pepino Mosaic Virus RNA PCR (premixed PCR kit - Loewe®)**

RNA PCR complete reaction kit for the detection of Pepino Mosaic Virus.

Catalog No.	Designation	Size
09128C/100	Pepino Mosaic Virus complete RNA PCR reaction kit	100 tests
09128PC	Positive PCR Control Pepino Mosaic Virus (DNA-based)	1 vial (10 reactions)
09128NC	Negative PCR Control Pepino Mosaic Virus (DNA-based)	1 vial (10 reactions)

- **Potato Leafroll Virus (premixed PCR kit - Loewe®)**

Catalog No.	Designation	Size
09031C/100	Potato Leafroll Virus RNA complete PCR reaction kit	100 tests
09031PC	Positive PCR Control Potato Leafroll Virus (DNA based)	1 vial (10 reactions)

**PCR KITS**

09031NC	Negative PCR Control Potato Leafroll Virus (DNA based)	1 vial (10 reactions)
---------	--	-----------------------

- **Potato Mop Top Virus (premixed PCR kit - Loewe®)**

Catalog No.	Designation	Size
09003C/100	Potato Mop Top Virus RNA complete PCR reaction kit	100 tests
09003PC	Positive PCR Control Potato Mop Top Virus (DNA based)	1 vial (10 reactions)
09003NC	Negative PCR Control Potato Mop Top Virus (DNA based)	1 vial (10 reactions)

- **Potato Virus Y (premixed PCR kit - Loewe®)**

Catalog No.	Designation	Size
09038C/100	Potato Virus Y RNA complete PCR reaction kit	100 tests
09038PC	Positive PCR Control Potato Virus Y (DNA based)	1 vial (10 reactions)
09038NC	Negative PCR Control Potato Virus Y (DNA based)	1 vial (10 reactions)

- **Potyvirus (premixed PCR kit - Loewe®)**

Catalog No.	Designation	Size
09041C/100	Potyvirus RNA complete PCR reaction kit	100 tests
09041PC	Positive PCR Control Potyvirus (DNA based)	1 vial (10 reactions)
09041NC	Negative PCR Control Potyvirus (DNA based)	1 vial (10 reactions)

- **Strawberry Latent Ringspot Virus (premixed PCR kit - Loewe®)**

Catalog No.	Designation	Size
09115C/100	Strawberry Latent Ringspot Virus RNA complete PCR reaction kit	100 tests
09115PC	Positive PCR Control Strawberry Latent Ringspot Virus (DNA based)	1 vial (10 reactions)
09115NC	Negative PCR Control Strawberry Latent Ringspot virus (DNA based)	1 vial (10 reactions)

- **Tobamovirus Broad Range PCR (premixed PCR kit - Loewe®)**

Detection of many members of the Tobamovirus genus with one Primer set!

Catalog No.	Designation	Size
09184C/100	Tobamovirus Broad Range Complete RNA PCR Reaction Kit	100 tests
09184PC	Positive PCR Control Tobamovirus (DNA-based)	1 vial (10 reactions)
09184NC	Negative PCR Control Potyvirus (DNA-based)	1 vial (10 reactions)

- **Tomato Brown Rugose Fruit Virus (ToBRFV) PCR (premixed PCR kit - Loewe®)**

**NEW!** RNA PCR complete reaction kit for the detection of Tomato Brown Rugose Fruit Virus

**REAGENTS**

Detection of many members of the Tobamovirus genus with one Primer set!

Catalog No.	Designation	Size
09175C/100	Tomato Brown Rugose Fruit complete RNA PCR reaction kit	100 tests
09175PC	Positive PCR Control Tomato Brown Rugose Fruit Virus (DNA-based)	1 vial (10 reactions)
09175NC	Negative PCR Control Tomato Brown rugose Fruit Virus (DNA-based)	1 vial (10 reactions)

- **Tomato Chlorosis Virus RNA PCR (premixed PCR kit - Loewe®)**

RNA PCR complete reaction kit for the detection of Tomato Chlorosis Virus

Catalog No.	Designation	Size
09102C/100	Tomato Chlorosis Virus complete RNA PCR reaction kit	100 tests
09102PC	Positive PCR Control Tomato Chlorosis Virus (DNA based)	1 vial (10 reactions)
09102NC	Negative PCR Control Tomato Chlorosis Virus (DNA based)	1 vial (10 reactions)

- **Tomato Infectious Chlorosis Virus RNA PCR (premixed PCR kit - Loewe®)**

RNA PCR complete reaction kit for the detection of Tomato Infectious Chlorosis Virus

Catalog No.	Designation	Size
09101C/100	Tomato Infectious Chlorosis Virus complete RNA PCR reaction kit	100 tests
09101PC	Positive PCR Control Tomato Infectious Chlorosis Virus (DNA-based)	1 vial (10 reactions)
09101NC	Negative PCR Control Tomato Chlorosis Virus (DNA-based)	1 vial (10 reactions)

- **Tomato Spotted Wilt Virus RNA PCR (premixed PCR kit - Loewe®)**

RNA PCR complete reaction kits for the detection of TSWV (Tomato Spotted Wilt Virus)

Catalog No.	Designation	Size
09501C/100	Tomato Spotted Wilt Virus RNA PCR reaction kit	100 tests
09501PC	Positive PCR Control Tomato Spotted Wilt Virus (DNA-based)	1 vial (10 reactions)
09501NC	Negative PCR Control Tomato Spotted Wilt Virus (DNA-based)	1 vial (10 reactions)

## REAGENTS

# Real-time PCR

- **Xylella fastidiosa complete REALTIME PCR reaction kit (Loewe®)**

We are offering our first complete REAL-TIME reaction kit for the detection of Xylella fastidiosa. This kit utilizes the real-time Polymerase Chain Reaction (Real-Time PCR) technique, using the fluorescent and intercalating dye SolisGreen™ to detect the amplification in real time.

### Kit Content

Primer Mix (pathogen specific primers)  
5x Mastermix (SolisGreen qPCR Mix\*)  
Positive control (Synthesized DNA)  
Negative control (DNA from healthy plants)  
PCR-grade water

\* provided by SOLIS Biodyne

Catalog #: 06119C/100

# Reagents

## Reagents

---

We carry all buffers, controls and reagents needed for the detection of plant pathogens using ELISA, PCR, Lateral flow, Immunofluorescence techniques.



Image courtesy of Agritest

## REAGENTS - BUFFERS

- **Albumin for ELISA**

Catalog No.	Designation	Size
00103/025	Albumin for ELISA	25g
00103/100	Albumin for ELISA	100g

- **Blocking Milk powder**

Catalog No.	Designation	Size
00104/001	Blocking Milk powder	1kg

- **Citrus Buffers**

Catalog No.	Designation	Size
B-KBC	Citrus Buffers	500
B-KAC	Citrus Buffers	1000

- **Coating Buffer powder**

Catalog No.	Designation	Size
07600/001	Coating Buffer powder	1 liter

- **Conjugate/Sample Buffer LOEWE II powder**

Catalog No.	Designation	Size
07615/001	Conjugate/Sample Buffer LOEWE II powder	1 liter

- **Conjugate/Sample Buffer powder**

Catalog No.	Designation	Size
07601/001	Conjugate/Sample Buffer powder	1 liter

- **Extraction Buffer LOEWE I powder**

Catalog No.	Designation	Size
07613/001	Extraction Buffer LOEWE I powder	1 liter

- **Fruit tree Buffers**

Catalog No.	Designation	Size
B-KB	Fruit tree Buffers	500
B-KA	Fruit tree Buffers	1000

**REAGENTS**

- **Grapevine Buffers**

Catalog No.	Designation	Size
B-KBV	Grapevine Buffers	500
B-KAV	Grapevine Buffers	1000
B-S01B	Grapevine Buffers	2500
B-S-01A	Grapevine Buffers	5000

- **Grapevine extraction**

Catalog No.	Designation	Size
B-EV	Grapevine extraction	2 Liters

- **Lateral Flow Supplements (Loewe®)**

LF07810	Lateral Flow Supplements	Size
LF07810/05	Micro-pestle for leaf tissue homogenization	5 pieces
LF07810/20	Micro-pestle for leaf tissue homogenization	20 pieces
LF07810/50	Micro-pestle for leaf tissue homogenization	50 pieces

- **4-Nitrophenylphosphate Na<sub>2</sub>-salt**

Catalog No.	Designation	Size
00130/005	4-Nitrophenylphosphate Na <sub>2</sub> -salt	5g
00130/025	4-Nitrophenylphosphat Na <sub>2</sub> -salt	25g

- **Polyvinylpyrrolidone K25**

Catalog No.	Designation	Size
00134/001	Polyvinylpyrrolidone K25	1kg

- **Sample Buffer for LOEWE®FAST Kits**

LF07810	Lateral Flow Supplements	Size
LF700BU/001	Sample Buffer for LOEWE®FAST Kits (not for use with grape)	1 liter

- **Substrate Buffer 5X liquid**

Catalog No.	Designation	Size
07602/025	Substrate Buffer 5X liquid	25 ml
07602/100	Substrate Buffer 5X liquid	100 ml

- **Substrate Tablets**

Catalog No.	Designation	Size
07617/005	Substrate Tablets 5 mg	5 tablets
07617/010	Substrate Tablets 5 mg	10 tablets
07614/005	Substrate Tablets 20 mg	5 tablets
07614/010	Substrate Tablets 20 mg	10 tablets



**REAGENTS**

- Tween 20® ELISA grade

Catalog No.	Designation	Size
00131/100	Tween 20® ELISA grade	100 ml

Catalog No.	Designation	Size
07603/005	Wash Buffer Powder	5 liter

## REAGENTS - CONTROLS

- Grapevine Negative Control (Agritest)

Catalog No.	Designation	Size
NC	Grapevine Negative Control	200 uL

- Grapevine Positive Control

Catalog No.	Designation	Size
PC	Grapevine Positive Control	200 uL

## REAGENTS – EXTRACTION KITS

- Plant DNA Extraction Kit for Plants (Loewe®)

Catalog No.	Designation	Size
0845DNA/050	Plant DNA Extraction Kit for Plants - lysis buffers - precipitation buffer - binding and washing solution, proteinase K - prefilter and spin filters with receiver and elution tubes - manual	50 extractions

- Plant RNA Extraction Kit for Plants (Loewe®)

Catalog No.	Designation	Size
0945RNA/050	Plant RNA Extraction Kit for Plants - 2 different lysis buffers - washing solutions - RNase-free water - spin filters with receiver and elution tubes - manual	50 extractions

## **CONTACT INFO**



**Address:** Ephyra Biosciences Inc  
4554 Reid Lane  
Battersea ON K0H 1H0  
CANADA

**Phone:** 647-225-5044

**Email:** [info@ephyrabiosciences.com](mailto:info@ephyrabiosciences.com)

**Website:** [www.ephyrabiosciences.com](http://www.ephyrabiosciences.com)